

WAAS CH <b>53507</b> <b>W25A</b>	APP CRS <b>251°</b>	Rwy Idg <b>11095</b> TDZE <b>104</b> Apt Elev <b>128</b>
--	------------------------	--

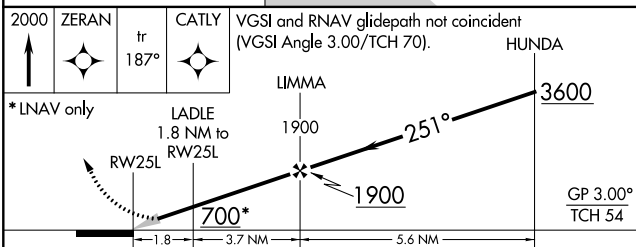
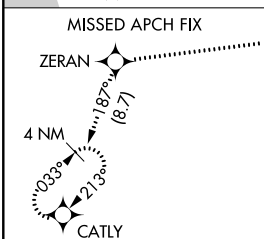
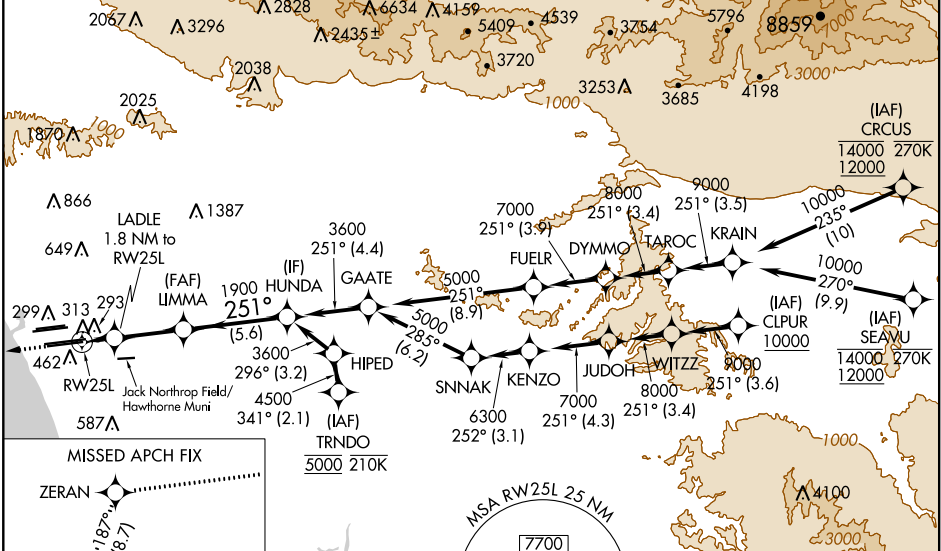
# RNAV (GPS) Y RWY 25L

LOS ANGELES INTL (LAX)

For uncompensated Baro-VNAV systems, LNAV/VNAV NA below 5°C (41°F) or above 54°C (130°F). DME/DME RNP-0.3 NA. For inop ALS, increase LPV all Cats visibility to RVR 4500. Simultaneous approach authorized. Simultaneous approach authorized with HHR 25. LNAV only approach NA during simultaneous operations. Use of FD or AP providing RNAV track guidance required during simultaneous operations.

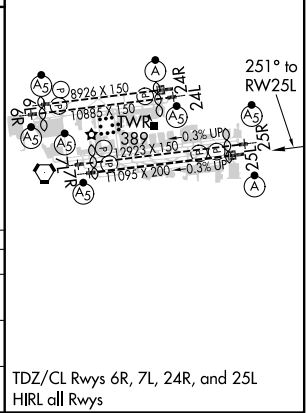
ALS-F-2  
MISSED APPROACH: Climb to 2000 direct ZERAN and on track 187° to CATLY and hold.

D-ATIS ARR <b>133.8</b> DEP <b>135.65</b>	SOCAL APP CON <b>124.3 363.2</b> (APCH FM WEST) <b>124.9 269.0</b> (090°-224°) <b>128.5 360.7</b> (045°-089°)	LOS ANGELES TOWER <b>N 133.9 239.3</b> <b>S 120.95 379.1</b>	GND CON <b>N 121.65 327.0</b> <b>S 121.75 327.0</b> <b>W 121.4 327.0</b>	CLNC DEL <b>120.35</b> <b>327.0</b>	CPDLC
---	---	--	---	---	-------



CATEGORY	A	B	C	D
LPV DA		365/20	261 (300-½)	
LNAV/VNAV DA		575/60	471 (500-1½)	
LNAV MDA	640/24	536 (600-½)	640/55	536 (600-1¼)

ELEV 128	TDZE 104
----------	----------



SW-3, 24 MAY 2018 to 21 JUN 2018

SW-3, 24 MAY 2018 to 21 JUN 2018