

# TRTON TWO DEPARTURE (RNAV)

AL-237 (FAA)

LOS ANGELES INTL (LAX)  
LOS ANGELES, CALIFORNIA

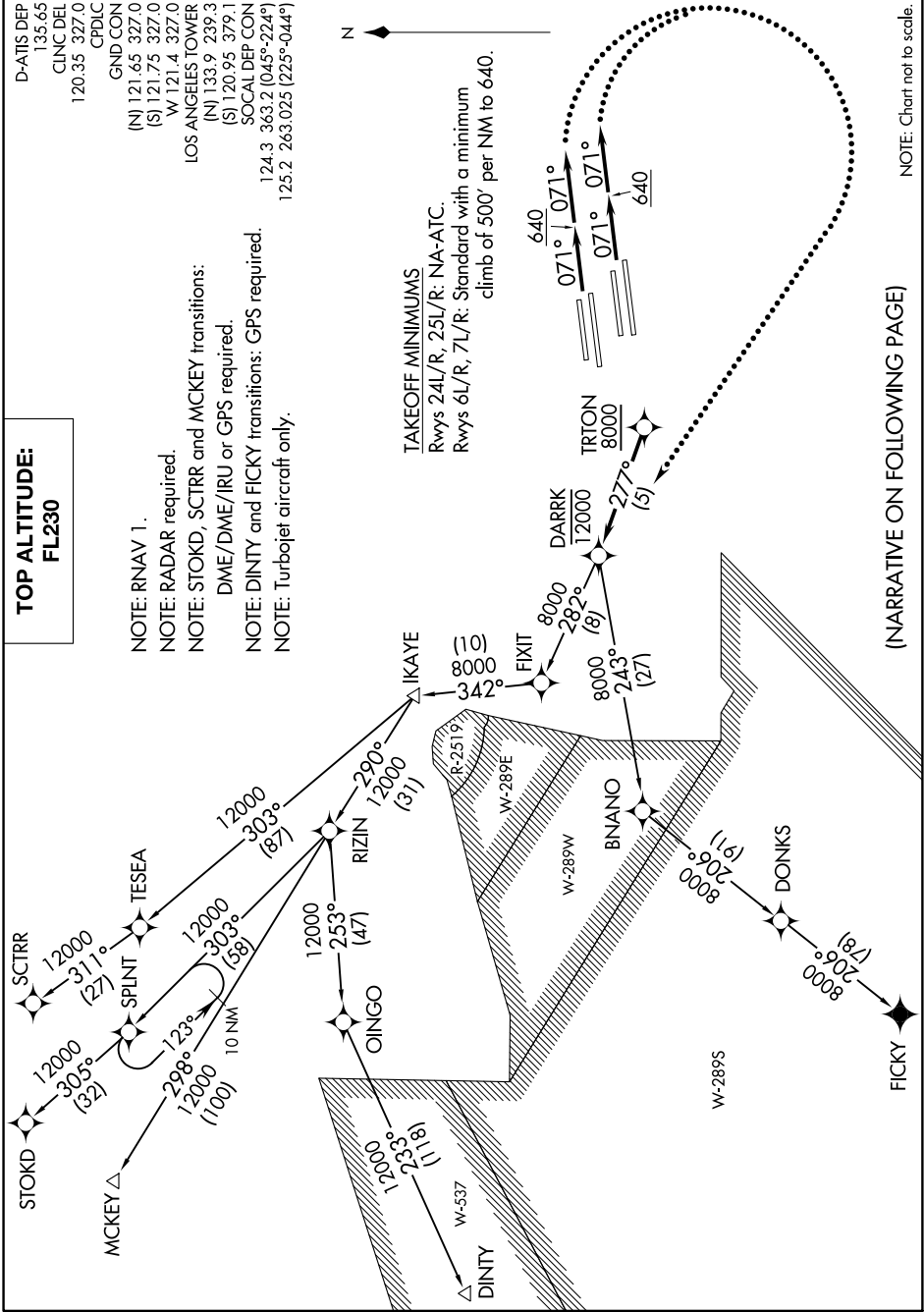
SW-3, 24 MAY 2018 to 21 JUN 2018

**TOP ALTITUDE:  
FL230**

D-AIS DEP 135.65  
CLINC DEL 120.35 327.0  
CPDLC  
GND:CON (N) 121.65 327.0  
(S) 121.75 327.0  
W 121.4 327.0  
LOS ANGELES TOWER (N) 133.9 239.3  
SOCAL DEP CON (S) 120.95 379.1  
124.3 363.2 (045°-224°)  
125.2 263.025 (225°-044°)

NOTE: RNAV 1.  
NOTE: RADAR required.  
NOTE: STOKD, SCTRR and MCKEY transitions:  
DME/DME/IRU or GPS required.  
NOTE: DINTY and FICKY transitions: GPS required.  
NOTE: Turbojet aircraft only.

TAKEOFF MINIMUMS  
Rwys 24L/R, 25L/R: NA-ATC.  
Rwys 6L/R, 7L/R: Standard with a minimum  
climb of 500' per NM to 640.



(NARRATIVE ON FOLLOWING PAGE)

NOTE: Chart not to scale.

SW-3, 24 MAY 2018 to 21 JUN 2018

# TRTON TWO DEPARTURE (RNAV)

LOS ANGELES, CALIFORNIA  
LOS ANGELES INTL (LAX)