

TUSTI TWO DEPARTURE (RNAV)

AL-237 (FAA)

LOS ANGELES INTL (LAX)
LOS ANGELES, CALIFORNIA

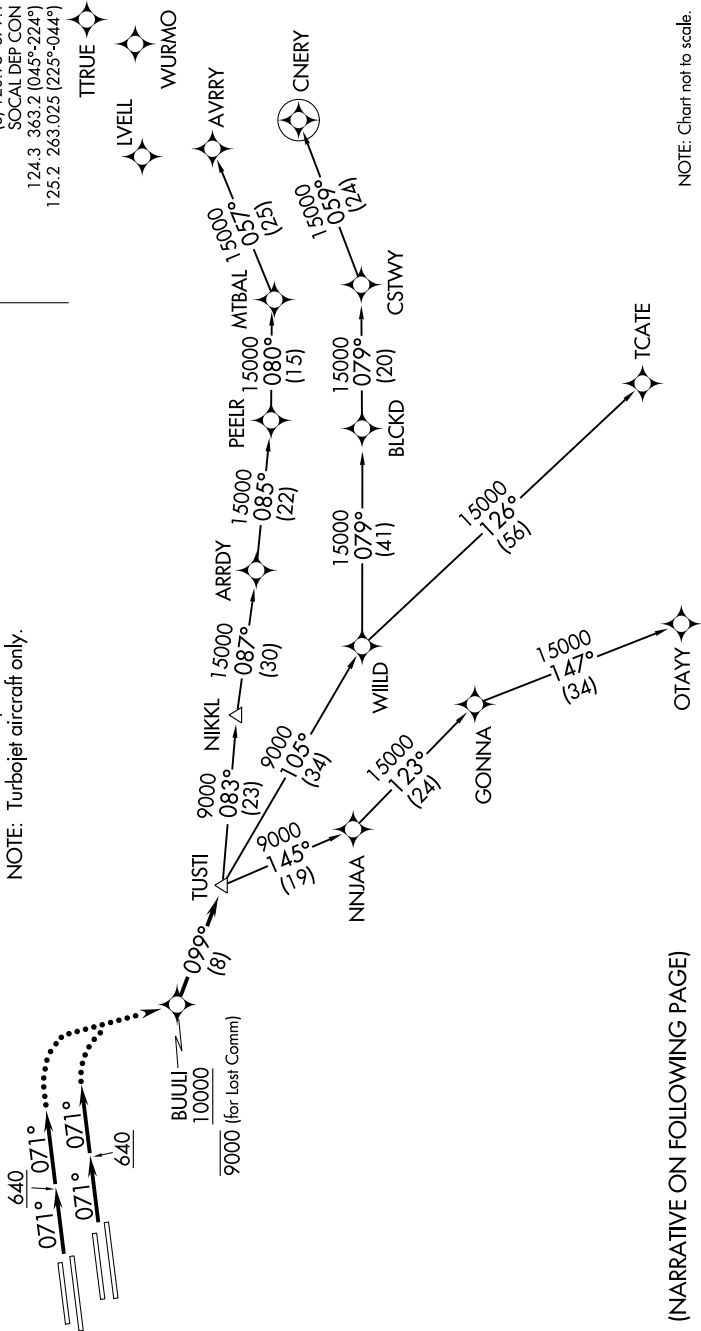
SW-3, 24 MAY 2018 to 21 JUN 2018

TOP ALTITUDE:
17000

TAKEOFF MINIMUMS

Rwys 6L/R, 7L/R: Standard with minimum climb of 500' per NM to 640.
Rwys 24L/R, 25L/R: NA-ATC.

- NOTE: DME/DME/IRU or GPS required.
- NOTE: RNAV 1.
- NOTE: RADAR required.
- NOTE: Turbojet aircraft only.



NOTE: Chart not to scale.

(NARRATIVE ON FOLLOWING PAGE)

SW-3, 24 MAY 2018 to 21 JUN 2018