

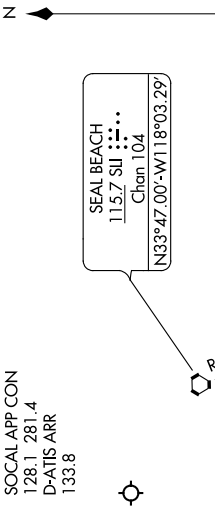
VISTA THREE ARRIVAL

AL-237 (FAA)

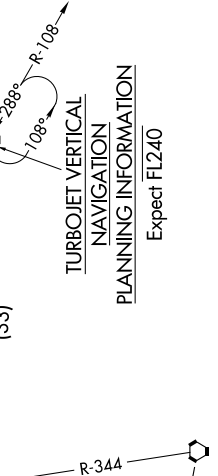
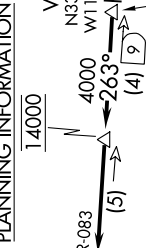
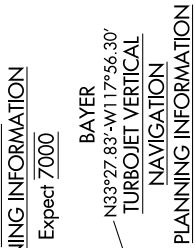
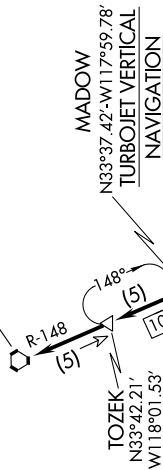
LOS ANGELES INTL (LAX)
LOS ANGELES, CALIFORNIA

SW-3, 24 MAY 2018 to 21 JUN 2018

SOCAL APP CON
128.1 281.4
D-ATIS ARR
133.8



SEAL BEACH
115.7 SU
Chan 104
N33°47.00'-W118°03.29'



ARRIVAL ROUTE DESCRIPTION

JULIAN TRANSITION (JLI.VISTA3): From over JLI VORTAC on JLI R-263 and OCN R-083 to VISTA. Thence, . . .

. . . from VISTA to CYNDE on OCN R-083. From CYNDE to OCN VORTAC on OCN R-083. From OCN VORTAC to SHIVE on OCN R-259 and SLI R-148. From SHIVE to CWARD on SLI R-148. From CWARD to BAYER on SLI R-148. From BAYER to MADOW on SLI R-148. From MADOW to TOZEK on SLI R-148. From TOZEK to SLI VORTAC on SLI R-148. Expect RADAR vectors to final approach course for Runways 24 or 25.

JULIAN
114.0 JLI
Chan 87
N33°08.43'-W116°35.16'

TURBOJET VERTICAL
NAVIGATION
PLANNING INFORMATION
Expect FL240

MISSION BAY
117.8 MZB
Chan 125

NOTE: DME and RADAR required.
NOTE: Chart not to scale.

VISTA THREE ARRIVAL

(VISTA.VISTA3) 02MAR17

LOS ANGELES, CALIFORNIA
LOS ANGELES INTL (LAX)

SW-3, 24 MAY 2018 to 21 JUN 2018