

PALMDALE, CALIFORNIA

# HI-TACAN RWY 25

TACAN PMD Chan <b>92</b>	APCH CRS <b>265°</b>	Rwy ldg <b>12,002</b> TDZE <b>2503</b> Arpt Elev <b>2543</b>
-----------------------------	-------------------------	--

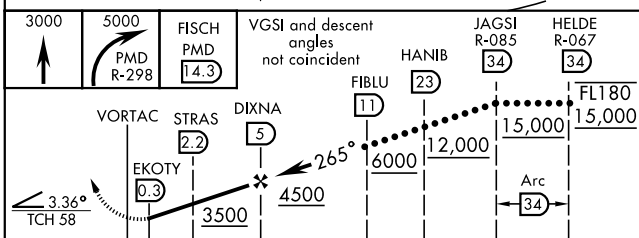
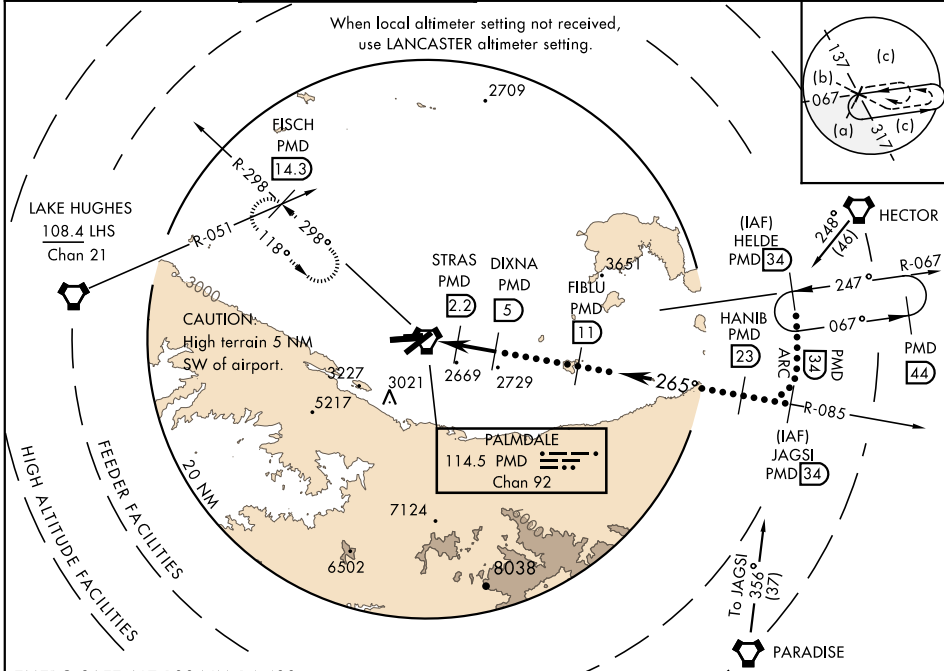
JAL-310 [USAF]

PALMDALE USAF PLANT 42 (KPMD)

▼ \* Circling S of Rwy 7-25 NA for CAT E aircraft.  
Circling to Rwy 7 NA at night.

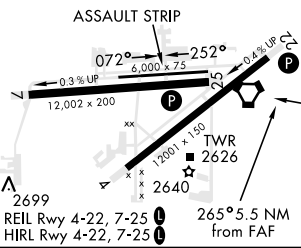
MISSED APPROACH: Climb to 3000 then climbing right turn to 5000 via PMD VORTAC R-298 to FISCH/PMD 14.3 DME and hold.

JOSHUA APP CON <b>124.55 363.0</b>	PALMDALE TOWER ★ <b>123.7 (CTAF) 0 317.6</b>	GND CON <b>121.9 348.6</b>	ATIS <b>118.275</b>
---------------------------------------	---	-------------------------------	------------------------



CATEGORY	C	D	E
S-25		2820-1 317 (300-1)	
CIRCLING *	3000-1½ 457 (500-1½)	3100-2 557 (600-2)	
LANCASTER ALTIMETER SETTING			
S-25	2880-1 377 (400-1)	2880-1¼ 377 (400-1¼)	
CIRCLING *	3060-1½ 517 (600-1½)	3160-2¼ 617 (700-2¼)	

ELEV 2543	TDZE 2503
-----------	-----------



PALMDALE, CALIFORNIA

34°38'N-118°05'W

PALMDALE USAF PLANT 42 (KPMD)

Amtd 1 16259

# HI-TACAN RWY 25

SW-3, 24 MAY 2018 to 21 JUN 2018

SW-3, 24 MAY 2018 to 21 JUN 2018