

LOC I-PMD <b>110.7</b>	APP CRS <b>254°</b>	Rwy Idg TDZE Apt Elev	<b>12002</b> <b>2503</b> <b>2543</b>
---------------------------	------------------------	-----------------------------	--

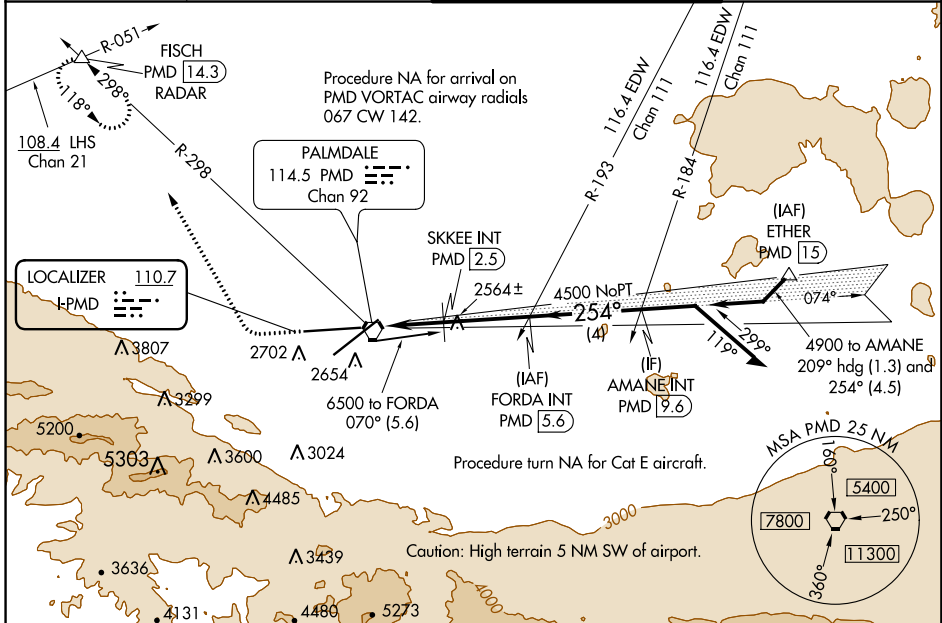
# ILS or LOC RWY 25

PALMDALE USAF PLANT 42 (PMD)

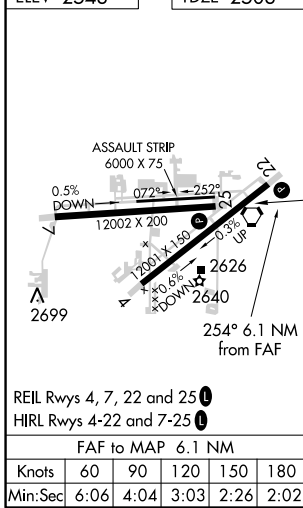
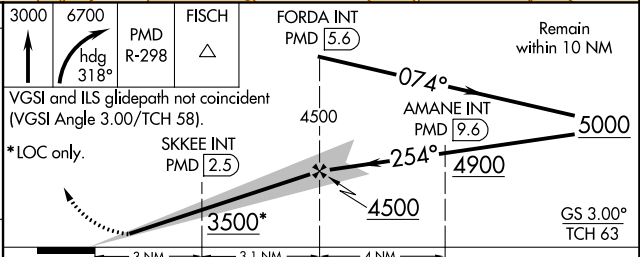
**▽** DME from PMD VORTAC.  
**△** Simultaneous reception of I-PMD and PMD DME required.  
 Circling NA for Cats C, D, and E south of Rwy 4 and 25.

MISSED APPROACH: Climb to 3000 then climbing right turn to 6700 on heading 318° and on PMD VORTAC R-298 to FISCH INT/PMD 14.3 DME/RADAR and hold, continue climb-in-hold to 6700.

ATIS <b>118.275</b>	JOSHUA APP CON <b>124.55 363.0</b>	PALMDALE TOWER ★ <b>123.7 (CTAF) 0 317.6</b>	GND CON <b>121.9 317.6</b>
------------------------	---------------------------------------	---	-------------------------------



ELEV 2543	TDZE 2503
-----------	-----------



CATEGORY	S-ILS 25				
	A	B	C	D	E
S-ILS 25	2703-3/4 200 (200-3/4)				
S-LOC 25	3500-1 1/4 997 (1000-1 1/4)	3500-1 1/2 997 (1000-1 1/2)	3500-3	3740-3	3760-3
<b>C</b> CIRCLING	3500-1 1/4 957 (1000-1 1/4)	3500-1 1/2 957 (1000-1 1/2)	3500-3 957 (1000-3)	3740-3 1197 (1200-3)	3760-3 1217 (1300-3)
SKKEE FIX MINIMUMS (DME REQUIRED)					
S-LOC 25	2820-1	317 (300-1)	2820-7/8	317 (300-7/8)	
<b>C</b> CIRCLING	3020-1 477 (500-1)	3060-1 517 (600-1)	3140-1 1/2 597 (600-1 1/2)	3740-3 1197 (1200-3)	3760-3 1217 (1300-3)

SW-3, 24 MAY 2018 to 21 JUN 2018

SW-3, 24 MAY 2018 to 21 JUN 2018