

VORTAC PMD 114.5 Chan 92	APP CRS 265°	Rwy Idg TDZE Apt Elev 12002 2503 2543
--	------------------------	---

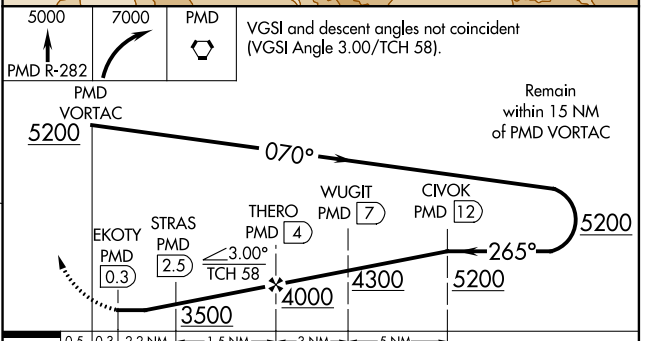
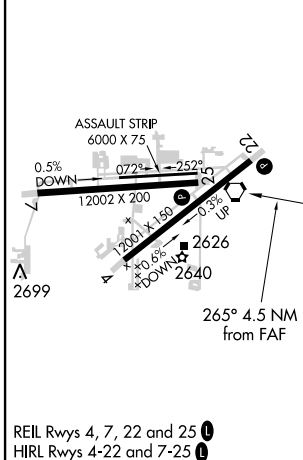
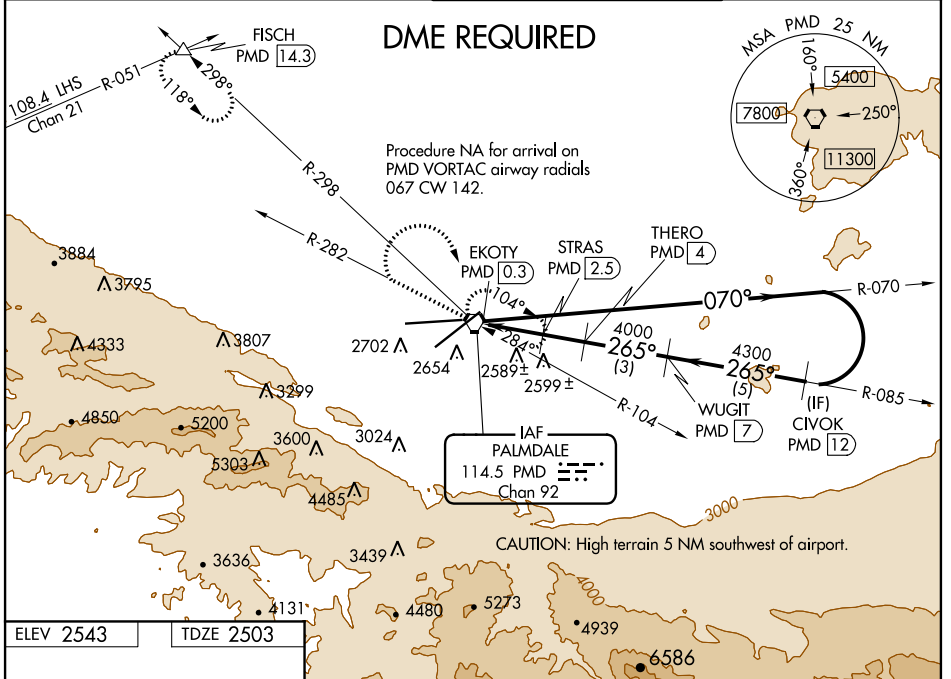
VOR or TACAN RWY 25

PALMDALE USAF PLANT 42 (PMD)

▼ Circling NA for Cats C, D, and E south of Rwy 4 and 25.
▲ DME required.

MISSED APPROACH: Climb to 5000 on PMD VORTAC R-282 then climbing right turn to 7000 direct PMD VORTAC and hold (TACAN aircraft climbing right turn to 6700 on PMD VORTAC R-298 to FISCH INT/ 14.3 DME and hold SE left turn 298° inbound, continue climb-in-hold to 6700).

ATIS 118.275	JOSHUA APP CON 124.55 363.0	PALMDALE TOWER * 123.7 (CTAF) 0 317.6	GND CON 121.9 317.6
------------------------	---------------------------------------	---	-------------------------------



CATEGORY	A	B	C	D	E
S-25	2840-1 337 (300-1)				
C CIRCLING	3020-1 477 (500-1)	3060-1 517 (600-1)	3140-1½ 597 (600-1½)	3740-3 1197 (1200-3)	3760-3 1217 (1300-3)

SW-3, 24 MAY 2018 to 21 JUN 2018

SW-3, 24 MAY 2018 to 21 JUN 2018