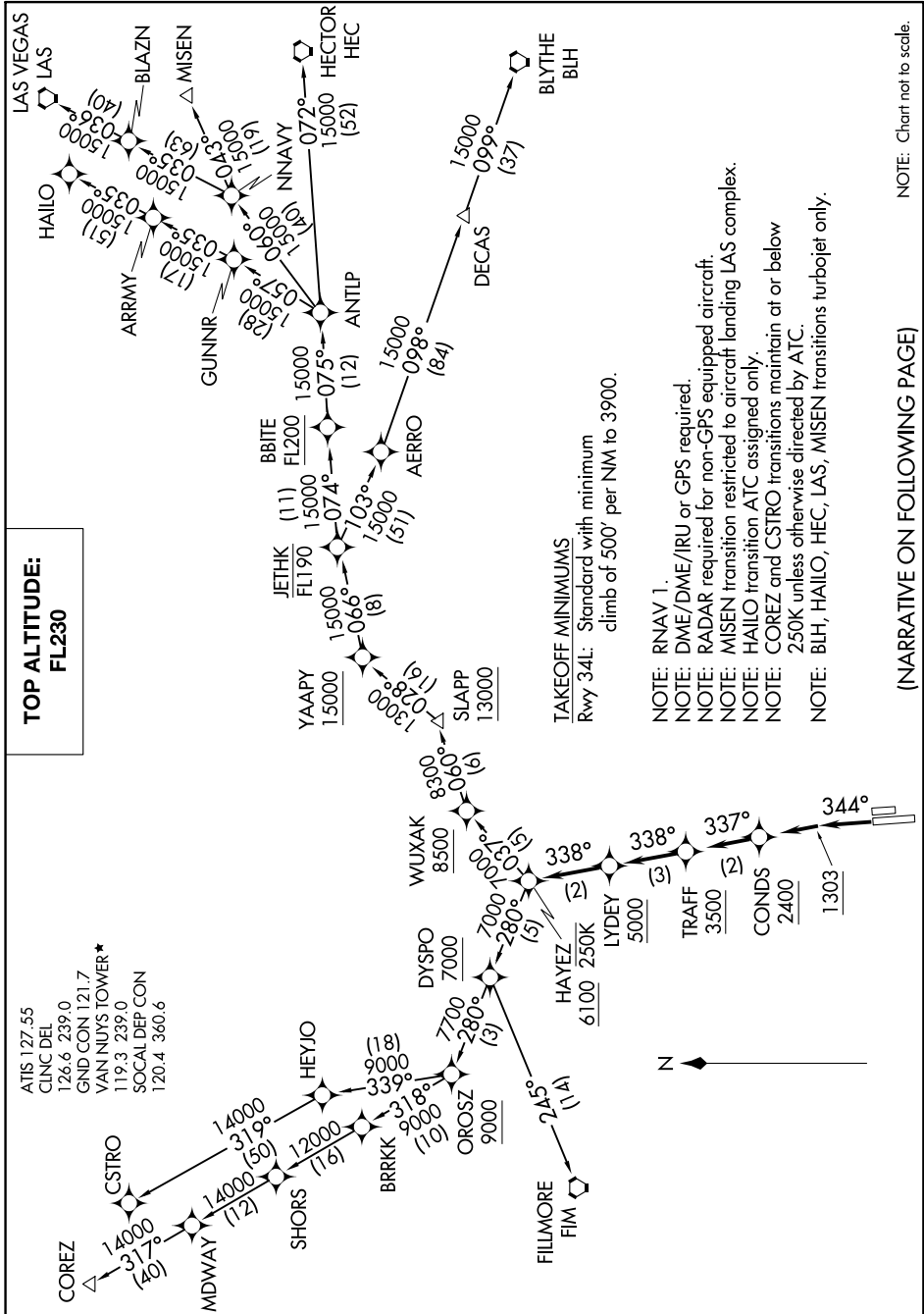


HAYEZ SEVEN DEPARTURE (RNAV)

SW-3, 24 MAY 2018 to 21 JUN 2018

**TOP ALTITUDE:
FL230**

- ATIS 127.55
- CLNC DEL 126.6 239.0
- GND CON 121.7
- VAN NUYS TOWER* 119.3 239.0
- SOCAL DEP CON 120.4 360.6



TAKEOFF MINIMUMS
Rwy 34L: Standard with minimum climb of 500' per NM to 3900.

- NOTE: RNAV 1.
- NOTE: DME/DME/IRU or GPS required.
- NOTE: RADAR required for non-GPS equipped aircraft.
- NOTE: MISEN transition restricted to aircraft landing LAS complex.
- NOTE: HAYEZ transition ATC assigned only.
- NOTE: COREZ and CSTRO transitions maintain at or below 250K unless otherwise directed by ATC.
- NOTE: BLH, HAILLO, HEC, LAS, MISEN transitions turbojet only.

(NARRATIVE ON FOLLOWING PAGE)

NOTE: Chart not to scale.

HAYEZ SEVEN DEPARTURE (RNAV)

SW-3, 24 MAY 2018 to 21 JUN 2018