


ILS Y RWY 16R

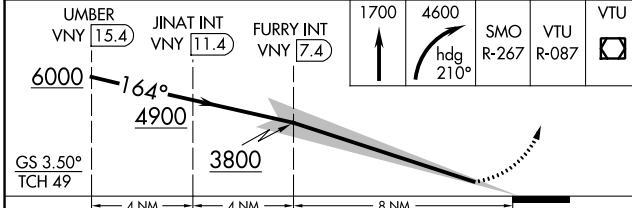
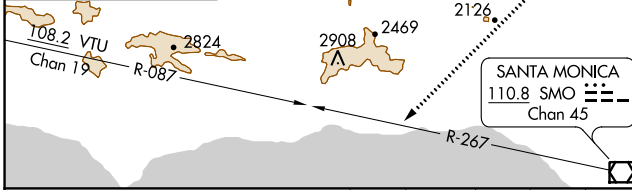
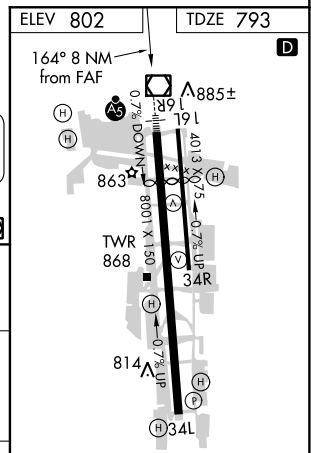
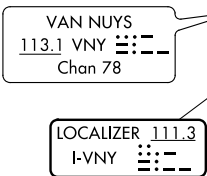
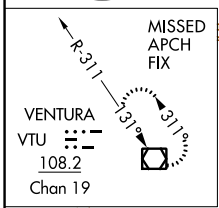
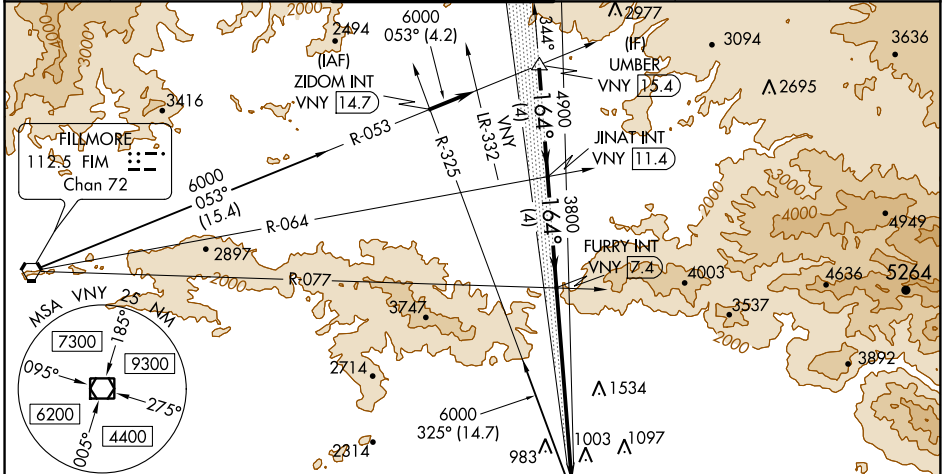
VAN NUYS (VNY)

LOC I-VNY 111.3	APP CRS 164°	Rwy ldg 6569
		TDZE 793
		Apt Elev 802


▼ For inop MALS, increase S-ILS all Cats visibility to 2 SM. When local altimeter setting not received, use Burbank altimeter setting and increase DA to 1480 feet and all Cats visibility to 1 1/2 SM. Autopilot coupled approach NA below 1900.

MALS  MISSED APPROACH: Climb to 1700 then climbing right turn to 4600 on heading 210° and on SMO VOR/DME R-267 and on VTU VOR/DME R-087 to VTU VOR/DME and hold.

ATIS 127.55	SOCAL APP CON 120.4 360.6 (NORTH) 134.2 338.2 (WEST)	VAN NUYS TOWER ★ 119.3 (CTAF) 239.0	GND CON 121.7	CLNC DEL 126.6 239.0	UNICOM 122.95
-----------------------	--------------------------------------------------------------------------	-----------------------------------------------	-------------------------	--------------------------------	-------------------------



CATEGORY	A	B	C	D
S-ILS 16R		1461-1 1/2	668 (700-1 1/2)	

HIRL Rwy 16R-34L 

MIRL Rwy 16L-34R

SW-3, 24 MAY 2018 to 21 JUN 2018

SW-3, 24 MAY 2018 to 21 JUN 2018