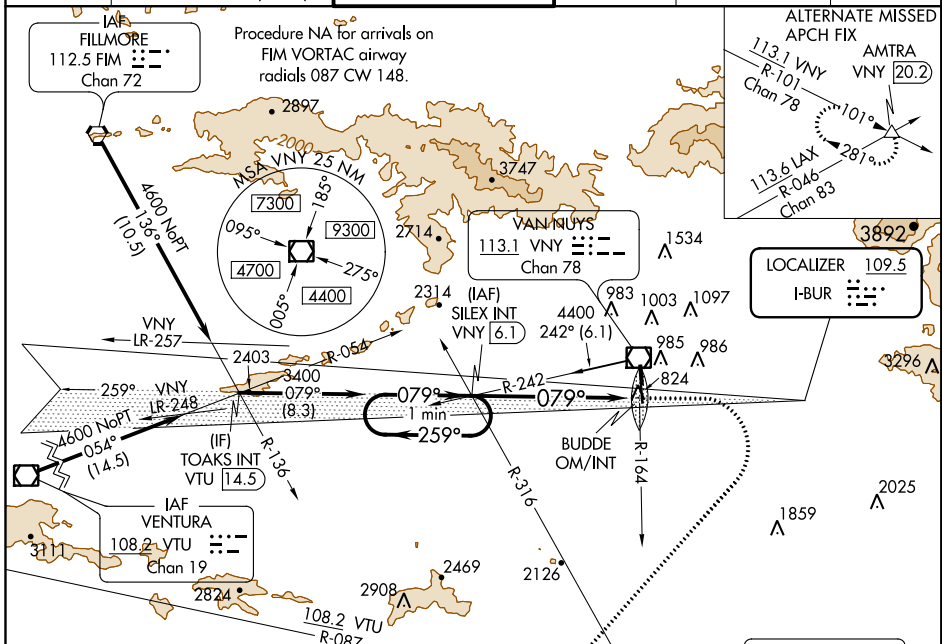


**LDA-C**  
VAN NUYS (VNY)

LOC I-BUR <b>109.5</b>	APP CRS <b>079°</b>	Rwy Idg TDZE Apt Elev <b>N/A</b> <b>802</b>
---------------------------	------------------------	--

**Night landing: RWY 16L NA.**  
**Rwy 16L helicopter visibility reduction below 1 SM NA.**  
**MISSED APPROACH: Climb to 1900 then climbing right turn to 4600 on heading 210° and on SMO VOR/DME R-267 and on VTU VOR/DME R-087 to VTU VOR/DME and hold.**

ATIS <b>127.55</b>	SOCAL APP CON <b>120.4 360.6 (NORTH)</b> <b>134.2 338.2 (WEST)</b>	VAN NUYS TOWER ★ <b>119.3 (CTAF) 0 239.0</b>	GND CON <b>121.7</b>	CLNC DEL <b>126.6 239.0</b>	UNICOM <b>122.95</b>
-----------------------	--	---	-------------------------	--------------------------------	-------------------------



ELEV 802	<b>D</b>
HIRL Rwy 16R-34L MIRL Rwy 16L-34R	
FAF to MAP 6 NM	
Knots	60 90 120 150 180
Min:Sec	6:00 4:00 3:00 2:24 2:00

CATEGORY <b>CIRCLING</b>	A 1500-1	B 698 (700-1)	C 1500-2 698 (700-2)	D 2060-3 1258 (1300-3)
-----------------------------	-------------	------------------	----------------------------	------------------------------

SW-3, 24 MAY 2018 to 21 JUN 2018

SW-3, 24 MAY 2018 to 21 JUN 2018