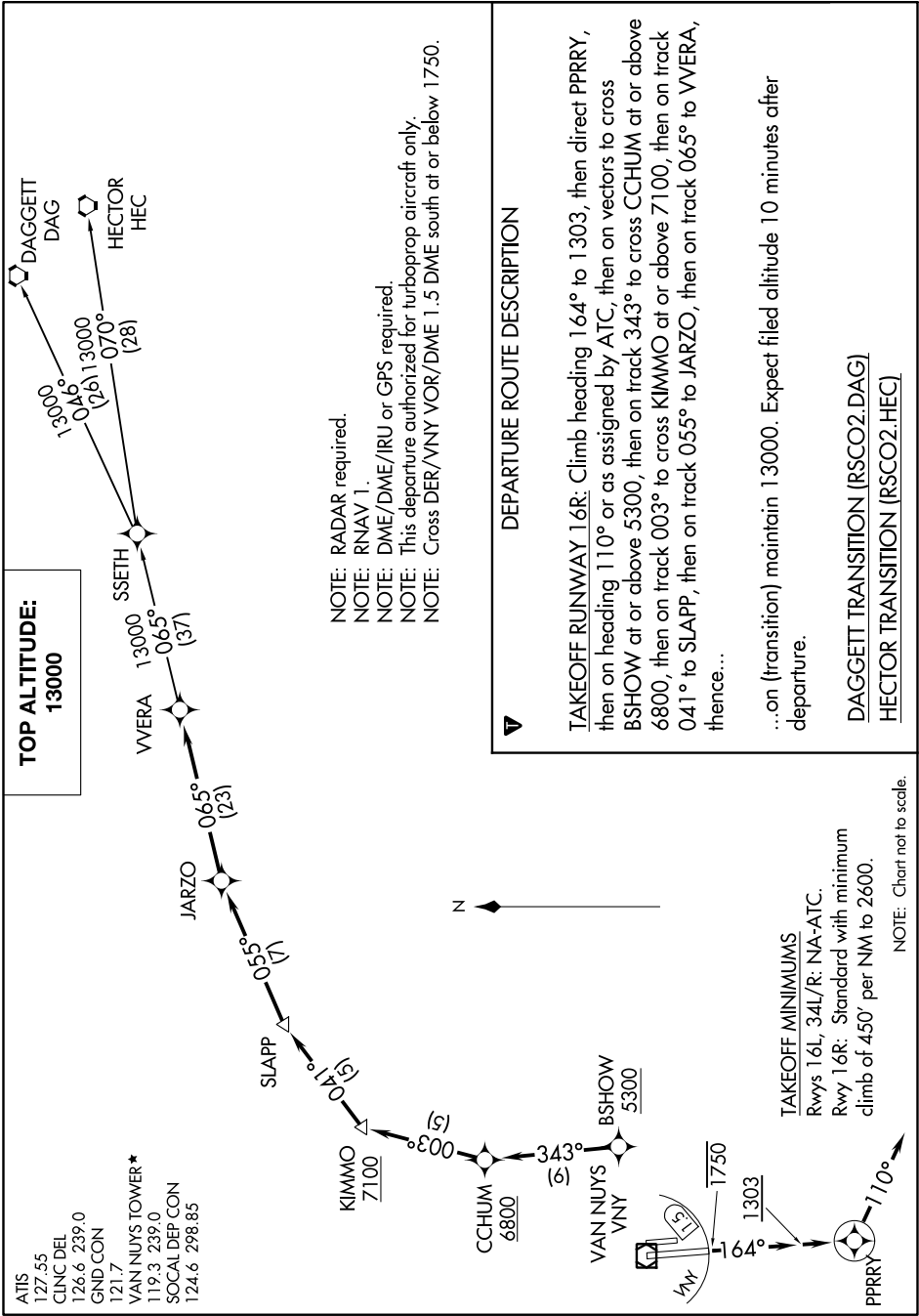


ROSCOE TWO DEPARTURE(RNAV)

AL-552 (FAA)

VAN NUYS (VNY)
VAN NUYS, CALIFORNIA

SW-3, 24 MAY 2018 to 21 JUN 2018



**TOP ALTITUDE:
13000**

ATIS 127.55
 CLNC DEL 124.6 239.0
 GND CON 124.6 239.0
 121.7
 VAN NUYS TOWER * 119.3 239.0
 SOCIAL DEP CON 124.6 298.85

NOTE: RADAR required.
 NOTE: RNAV 1.
 NOTE: DME/DME/IRU or GFS required.
 NOTE: This departure authorized for turboprop aircraft only.
 NOTE: Cross DER/VNY VOR/DME 1.5 DME south at or below 1750.

DEPARTURE ROUTE DESCRIPTION

TAKEOFF RUNWAY 16R: Climb heading 164° to 1303, then direct PRRY, then on heading 110° or as assigned by ATC, then on vectors to cross BSHOW at or above 5300, then on track 343° to cross CCHUM at or above 6800, then on track 003° to cross KIMMO at or above 7100, then on track 041° to SLAPP, then on track 055° to JARZO, then on track 065° to VVERA, thence...

...on (transition) maintain 13000. Expect filed altitude 10 minutes after departure.

DAGGETT TRANSITION (RSCO2.DAG)
HECTOR TRANSITION (RSCO2.HEC)

TAKEOFF MINIMUMS
 Rwys 16L, 34L/R: NA-ATC.
 Rwy 16R: Standard with minimum climb of 450' per NM to 2600.

NOTE: Chart not to scale.

ROSCOE TWO DEPARTURE(RNAV)

(RSCO2.WERA) 24MAY18

VAN NUYS, CALIFORNIA
VAN NUYS (VNY)

SW-3, 24 MAY 2018 to 21 JUN 2018