

(WLKKR3.WLKKR)18144

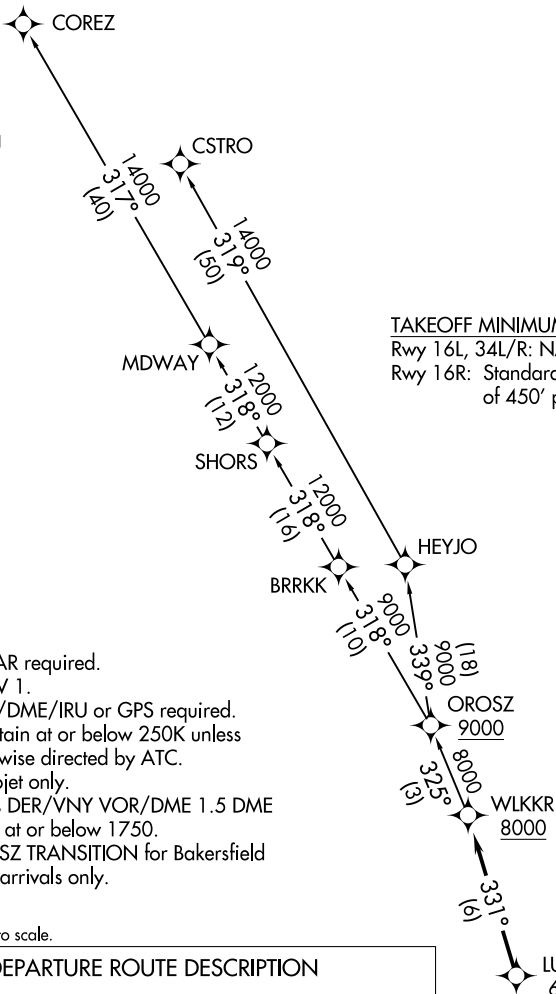
WLKKR THREE DEPARTURE (RNAV)

AL-552 (FAA)

VAN NUYS (VNY)
VAN NUYS, CALIFORNIA

**TOP ALTITUDE:
FL230**

ATIS
127.55
CLNC DEL
126.6 239.0
GND CON
121.7
SOCAL DEP CON
134.2 338.2



TAKEOFF MINIMUMS
Rwy 16L, 34L/R: NA, ATC
Rwy 16R: Standard with a minimum climb of 450' per NM to 2600.

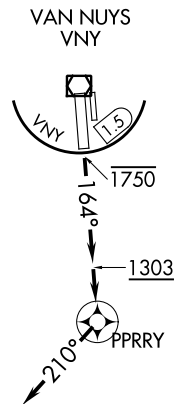
- NOTE: RADAR required.
- NOTE: RNAV 1.
- NOTE: DME/DME/IRU or GPS required.
- NOTE: Maintain at or below 250K unless otherwise directed by ATC.
- NOTE: Turbojet only.
- NOTE: Cross DER/VNY VOR/DME 1.5 DME south at or below 1750.
- NOTE: OROSZ TRANSITION for Bakersfield area arrivals only.

NOTE: Chart not to scale.

DEPARTURE ROUTE DESCRIPTION

TAKEOFF RUNWAY 16R: Climb heading 164° to 1303, then direct PPRRY, then on heading 210°, or as assigned by ATC, then on vectors to cross LUVVY at or above 6000 then on track 331° to cross WLKKR at or above 8000 thence...
...on (transition) maintain FL230. Expect filed altitude 10 minutes after departure.

- COREZ TRANSITION (WLKKR3.COREZ)
- CSTRO TRANSITION (WLKKR3.CSTRO)
- OROSZ TRANSITION (WLKKR3.ROSZ)



VAN NUYS, CALIFORNIA
VAN NUYS (VNY)

WLKKR THREE DEPARTURE (RNAV)

(WLKKR3.WLKKR) 24MAY18

SW-3, 24 MAY 2018 to 21 JUN 2018

SW-3, 24 MAY 2018 to 21 JUN 2018