

CHOII TWO DEPARTURE (RNAV)

AL-5023 (FAA)

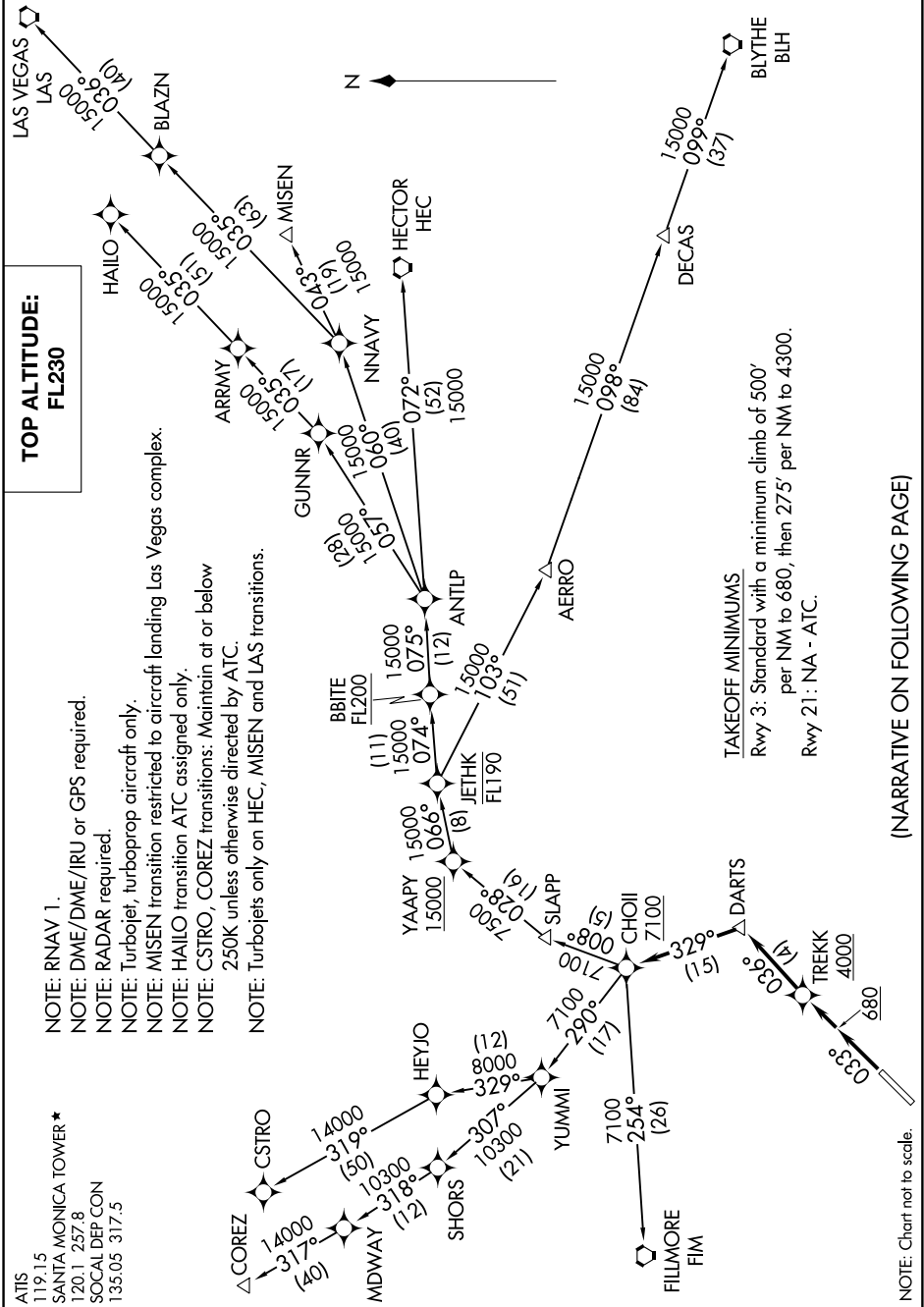
SANTA MONICA MUNI (SMO)
SANTA MONICA, CALIFORNIA

SW-3, 24 MAY 2018 to 21 JUN 2018

ATIS
119.15
SANTA MONICA TOWER ★
120.1 257.8
SOCAL DEP CON
135.05 317.5

- NOTE: RNAV 1.
- NOTE: DME/DME/IRU or GPS required.
- NOTE: RADAR required.
- NOTE: Turbojet, turboprop aircraft only.
- NOTE: MISEN transition restricted to aircraft landing Las Vegas complex.
- NOTE: HALLO transition ATC assigned only.
- NOTE: CSTRO, COREZ transitions: Maintain at or below 250K unless otherwise directed by ATC.
- NOTE: Turbojets only on HEC, MISEN and LAS transitions.

**TOP ALTITUDE:
FL230**



TAKEOFF MINIMUMS
 Rwy 3: Standard with a minimum climb of 500' per NM to 680, then 275' per NM to 4300.
 Rwy 21: NA - ATC.

(NARRATIVE ON FOLLOWING PAGE)

SW-3, 24 MAY 2018 to 21 JUN 2018

NOTE: Chart not to scale.

CHOII TWO DEPARTURE (RNAV)

(CHOII2.CHOII) 01FEB18

SANTA MONICA, CALIFORNIA
SANTA MONICA MUNI (SMO)