

RNAV (GPS) RWY 21

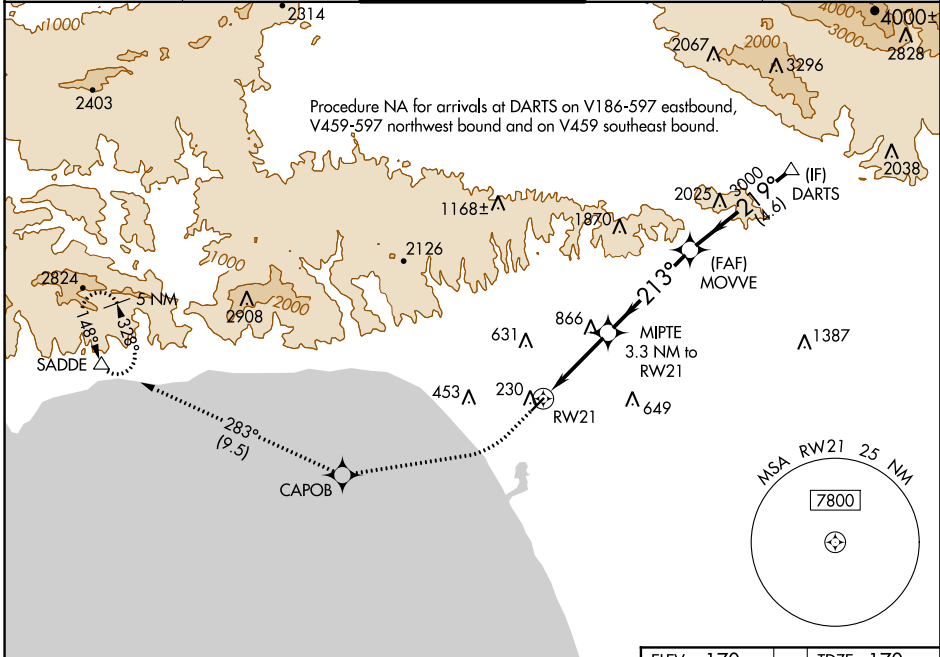
SANTA MONICA MUNI (SMO)

WAAS CH 90339 W21A	APP CRS 213°	Rwy ldg TDZE 170 Apt Elev 170
--	------------------------	---

RNP APCH
 ▼ For uncompensated Baro-VNAV systems, LNAV/VNAV NA below 5°C (41°F) or above 14°C (58°F). Rwy 21 helicopter visibility reduction below 1 SM NA.
 ▲

MISSED APPROACH: Climb to 600 then climbing right turn to 5000 direct CAPOB and on track 283° to SADDE and hold, continue climb-in-hold to 5000.

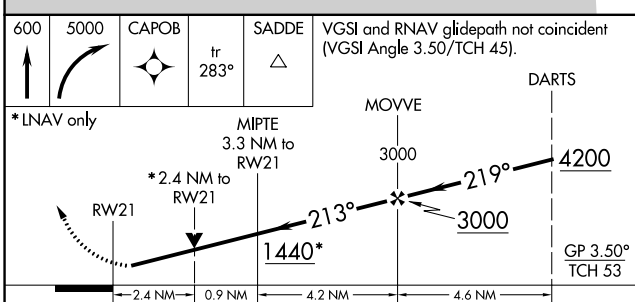
ATIS 119.15	SOCAL APP CON 128.5 235.975	SANTA MONICA TOWER* 120.1 (CTAF) 257.8	GND CON 121.9	UNICOM 122.95
-----------------------	---------------------------------------	---	-------------------------	-------------------------



SW-3, 24 MAY 2018 to 21 JUN 2018

SW-3, 24 MAY 2018 to 21 JUN 2018

RADAR REQUIRED



CATEGORY	A	B	C	D
LPV DA		440-1	270 (300-1)	
LNAV/VNAV DA		685-1¾	515 (600-1¾)	
LNAV MDA	1120-1¼	950 (1000-1¼)	1120-2½	950 (1000-2½)

