

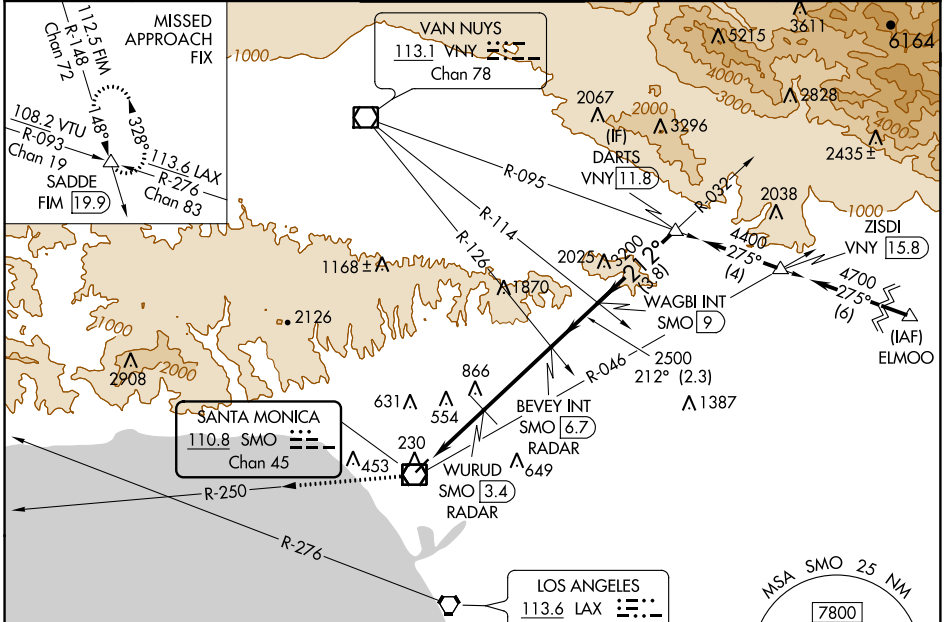
VOR/DME SMO 110.8 Chan 45	APP CRS 212°	Rwy Idg TDZE Apt Elev	N/A N/A 177
--	------------------------	-----------------------------	--

VOR-A
SANTA MONICA MUNI (SMO)

NA Helicopter visibility reduction below 1 SM NA.
Procedure NA for arrivals at ELMOO on V186 southeast bound.
Procedure NA at night.
Circling NA NW of Rwy 3-21.

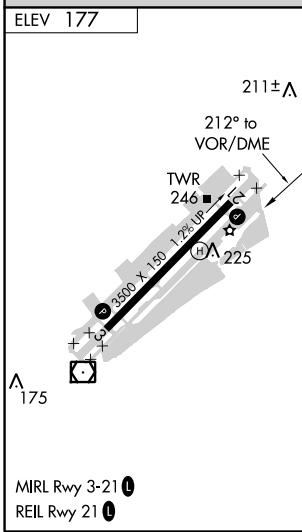
MISSED APPROACH: Climb to 5000 on SMO VOR/DME R-250 and on FIM VORTAC R-148 to SADDE INT/19.9 DME and hold, continue climb-in-hold to 5000.

ATIS 119.15	SOCAL APP CON 128.5 235.975	SANTA MONICA TOWER * 120.1 (CTAF) 257.8	GND CON 121.9	UNICOM 122.95
-----------------------	---------------------------------------	---	-------------------------	-------------------------



SW-3, 24 MAY 2018 to 21 JUN 2018

SW-3, 24 MAY 2018 to 21 JUN 2018



ELEV 177				
	FIM R-148 SADDE WURUD SMO 3.4 RADAR BEVEY INT SMO 6.7 RADAR WAGBI INT SMO 9 DARTS VNY 11.8	212° → 4400 3200 2500 1540		
	3.4 NM	3.2 NM	2.3 NM	3.8 NM
CATEGORY	A	B	C	D
CIRCLING	1540-1¼ 1363 (1400-1¼)	1540-1½ 1363 (1400-1½)	1540-3	1363 (1400-3)
WURUD FIX MINIMUMS				
CIRCLING	860-1	683 (700-1)	1180-3	1003 (1100-3)