


|              |             |          |             |
|--------------|-------------|----------|-------------|
| LOC I-HHR    | APP CRS     | Rwy Idg  | <b>4193</b> |
| <b>109.1</b> | <b>253°</b> | TDZE     | <b>63</b>   |
|              |             | Apt Elev | <b>66</b>   |

# LOC RWY 25

JACK NORTHROP FIELD/HAWTHORNE MUNI (HHR)

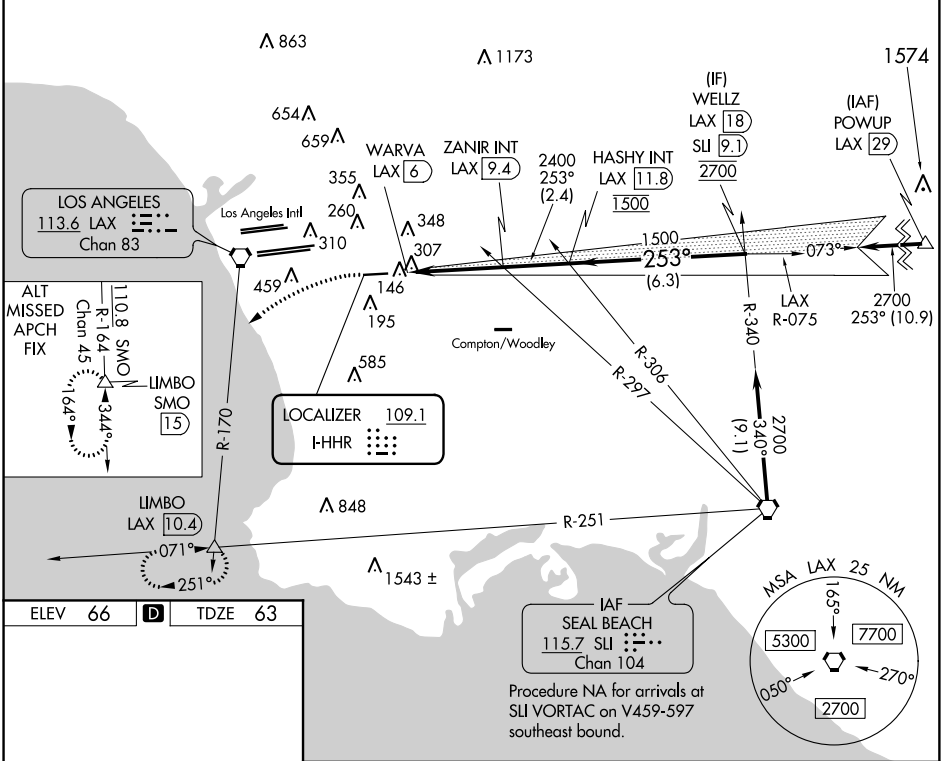
**⚠** Inop table does not apply to Cat C. Rwy 25 helicopter visibility reduction below  $\frac{3}{4}$  SM NA. Circling NA when control tower closed. When local altimeter setting not received, use Los Angeles Intl altimeter setting. Simultaneous approach authorized with LAX 25L/R 24L/R. Circling NA north of Rwy 7-25. DME from LAX VORTAC. Simultaneous reception of I-HHR and LAX DME required.

**ODALS**



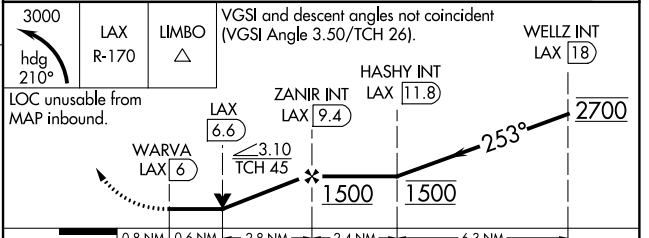
**MISSED APPROACH:** Climbing left turn to 3000 on heading 210° and LAX VORTAC R-170 to LIMBO INT/LAX 10.4 DME and hold.

|                      |                                     |  |                         |
|----------------------|-------------------------------------|--|-------------------------|
| ATIS<br><b>118.4</b> | SOCAL APP CON<br><b>124.9 269.0</b> | HAWTHORNE TOWER*<br><b>121.1(CTAF) 257.8</b> | GND CON<br><b>125.1</b> |
|----------------------|-------------------------------------|--|-------------------------|



ELEV 66 **D** TDZE 63

REIL Rwy 25  
MIRL Rwy 7-25



| CATEGORY          | A                  | B                         | C                    | D   |
|-------------------|--------------------|---------------------------|----------------------|---|
| S-25              | 580- $\frac{3}{4}$ | 517 (600- $\frac{3}{4}$ ) | 580- $\frac{1}{8}$   | 517 (600- $\frac{1}{8}$ )                         |
| <b>C</b> CIRCLING | 620-1              | 554 (600-1)               | 780-2<br>714 (800-2) | 780-2 $\frac{1}{4}$<br>714 (800-2 $\frac{1}{4}$ ) |

SW-3, 24 MAY 2018 to 21 JUN 2018

SW-3, 24 MAY 2018 to 21 JUN 2018