


WAAS CH <b>65825</b> <b>W25A</b>	APP CRS <b>253°</b>	Rwy Idg TDZE <b>63</b> Apt Elev <b>66</b>	<b>4193</b>
--	------------------------	---	-------------

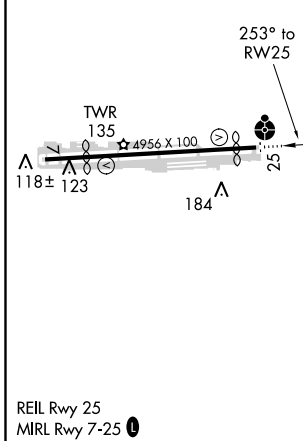
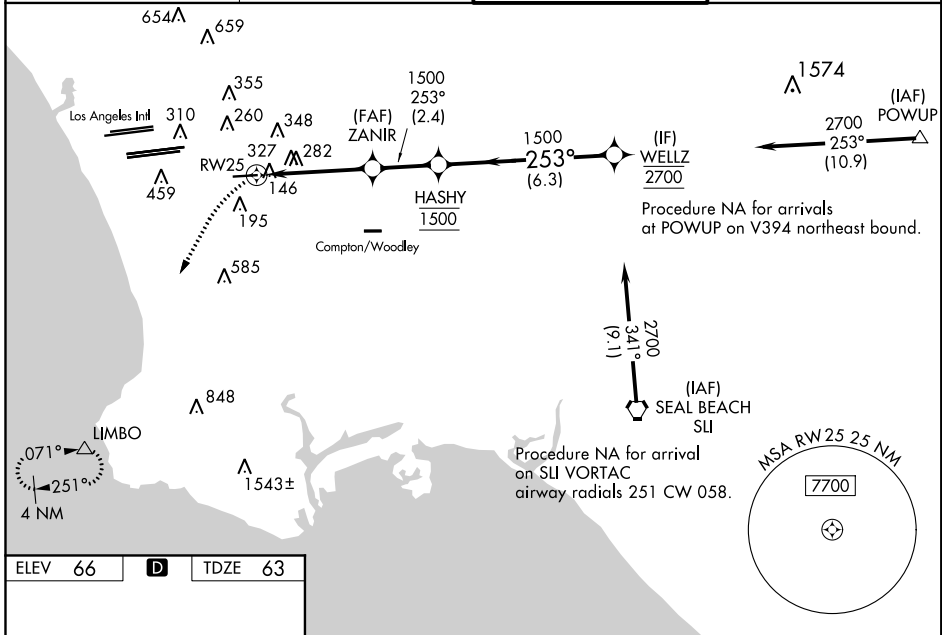
# RNAV (GPS) RWY 25

JACK NORTHROP FIELD/HAWTHORNE MUNI (HHR)

**▽** For uncompensated Baro-VNAV systems, LNAV/VNAV NA below 5°C (41°F) or above 49°C (120°F). Circling NA north of Rwy 7-25. Helicopter visibility reduction below 3/4 SM NA. DME/DME RNP-0.3 NA. For inop ALS increase LPV all visibilities to 1 3/4 SM, LNAV/VNAV all visibilities to 2 SM. Inop table does not apply to LNAV Cat C. Circling NA when control tower closed. Simultaneous approach authorized with LAX 25L/R, 24L/R. When local altimeter setting not received, use Los Angeles Intl altimeter setting. LNAV and LNAV/VNAV only approach NA during simultaneous operations. Use of FD or AP providing RNAV track guidance required during simultaneous operations.

**ODALS**  
  
**MISSED APPROACH:**  
 Climbing left turn to 3000 direct LIMBO and hold.

ATIS <b>118.4</b>	SOCAL APP CON <b>124.9 269.0</b>	<b>HAWTHORNE TOWER*</b> <b>121.1(CTAF) 257.8</b>	GND CON <b>125.1</b>
----------------------	-------------------------------------	---	-------------------------



3000	LIMBO	VGSi and RNAV glidepath not coincident (VGSi Angle 3.50/TCH 26).	
*LNAV Only.		*1.3 NM to RW25	
		ZANIR 1500	HASHY 1500
			WELTZ 2700
			GP 3.10° TCH 45
CATEGORY	A	B	C
LPV DA		571-1 1/2	508 (600-1 1/2)
LNAV/VNAV DA		653-1 7/8	590 (600-1 7/8)
LNAV MDA	580-3/4	517 (600-3/4)	580-1 3/8
<b>C</b> CIRCLING	620-1	554 (600-1)	780-2 714 (800-2)
			780-2 1/4 714 (800-2 1/4)

# RNAV (GPS) RWY 25

SW-3, 24 MAY 2018 to 21 JUN 2018

SW-3, 24 MAY 2018 to 21 JUN 2018