

# ANAHEIM NINE DEPARTURE

AL-5136 (FAA)

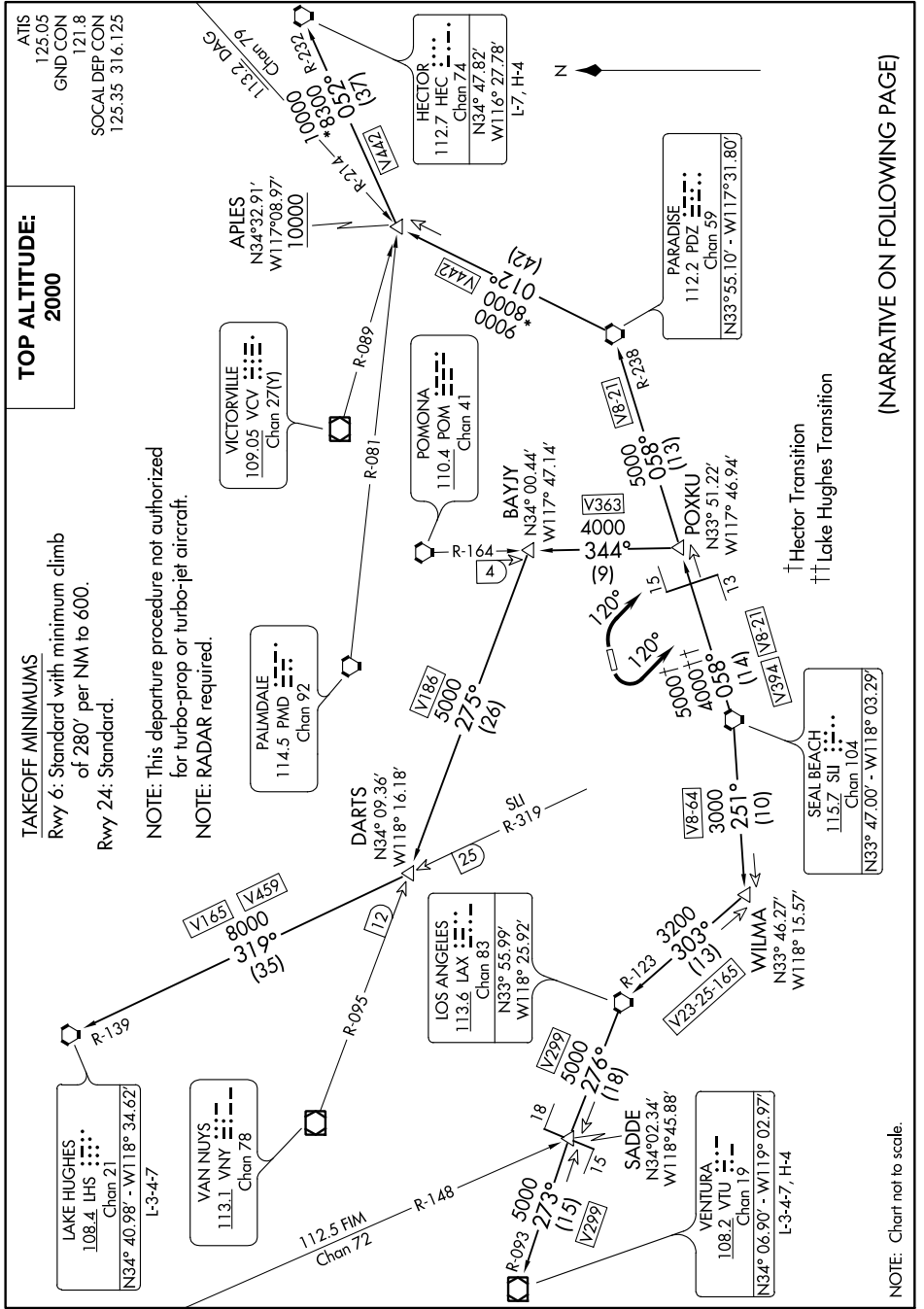
FULLERTON MUNI (FUL)  
FULLERTON, CALIFORNIA

**TOP ALTITUDE:  
2000**

### TAKEOFF MINIMUMS

Rwy 6: Standard with minimum climb of 280' per NM to 600.  
Rwy 24: Standard.

NOTE: This departure procedure not authorized for turbo-prop or turbo-jet aircraft.  
NOTE: RADAR required.



(NARRATIVE ON FOLLOWING PAGE)

SW-3, 24 MAY 2018 to 21 JUN 2018

SW-3, 24 MAY 2018 to 21 JUN 2018

# ANAHEIM NINE DEPARTURE

FULLERTON, CALIFORNIA  
FULLERTON MUNI (FUL)

NOTE: Chart not to scale.