

VORTAC LAX 113.6 Chan 83	APP CRS 135°	Rwy ldg TDZE 96 Apt Elev 103
--	------------------------	--

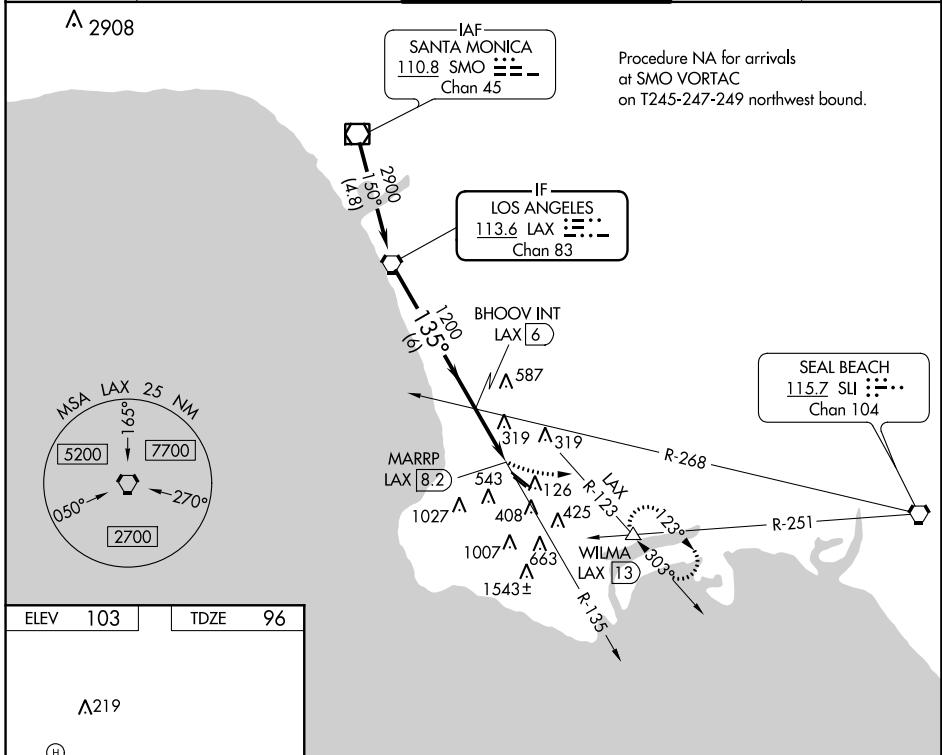
VOR RWY 11L

ZAMPERINI FIELD (TOA)

⚠ Circling NA southwest of Rwy 11R-29L. When local altimeter setting not received, except for operators with approved weather reporting service, use Los Angeles Intl altimeter setting and increase all MDA 40 feet and increase S-11L Cat A visibility and Circling Cat C visibility ¼ SM. Rwy 11L helicopter visibility reduction below ¾ SM NA.

MISSED APPROACH: Climbing left turn to 3000 on heading 075° and on LAX VORTAC R-123 to WILMA INT/LAX 13 DME and hold, continue climb-in-hold to 3000.

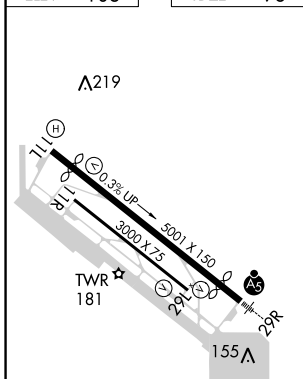
ATIS 125.6	SOCAL APP CON 124.3 363.2 (Rwys 11L, 11R) 127.2 269.6 (Rwys 29L, 29R)	TORRANCE TOWER* 133.075 257.8 (NORTH) 124.0 (CTAF) 257.8 (SOUTH)	GND CON 120.9	UNICOM 122.95
----------------------	---	---	-------------------------	-------------------------



SW-3, 24 MAY 2018 to 21 JUN 2018

SW-3, 24 MAY 2018 to 21 JUN 2018

ELEV 103	TDZE 96
-----------------	----------------



REIL Rwy 29L
MIRL Rwys 11L-29R and 11R-29L
FAF to MAP 2.2 NM

Knots	60	90	120	150	180
Min:Sec	2:12	1:28	1:06	0:53	0:44

VGSJ and descent angles not coincident (VGSJ Angle 3.50/TCH 10).				3000 hdg 075°	WILMA LAX R-123 △
LAX VORTAC	2900	BHOOV INT LAX 6	MARRP LAX 8.2		
135°		3.67° TCH 50			
6 NM		2.2 NM		0.5 NM	
CATEGORY	A	B	C	D	
S-11L	980-1 884 (900-1)	980-1¼ 884 (900-1¼)	980-2½ 884 (900-2½)	NA	
☑ CIRCLING	980-1¼	877 (900-1¼)	980-2½ 877 (900-2½)	NA	