

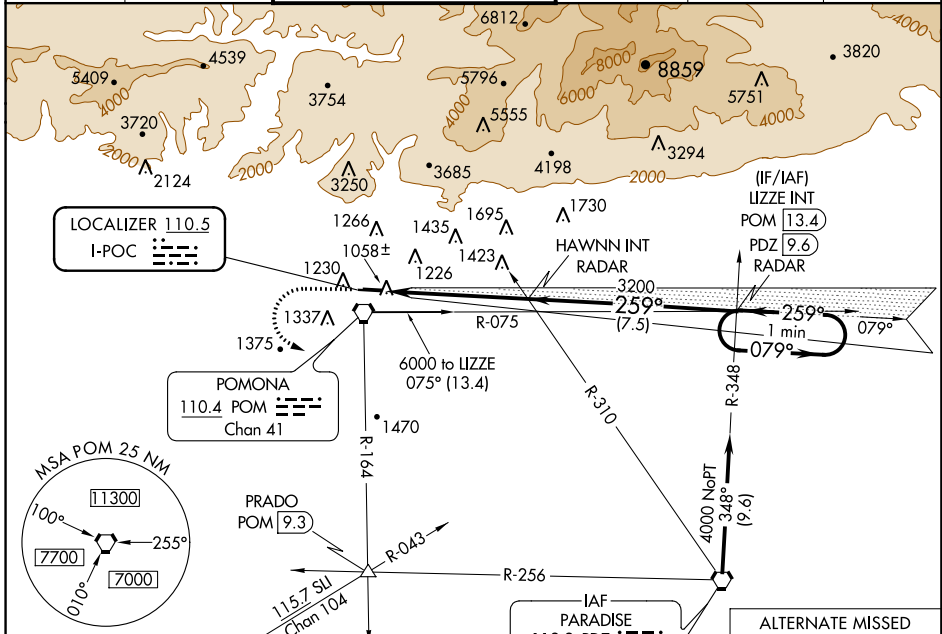
LOC I-POC 110.5	APP CRS 259°	Rwy ldg TDZE 4151 1005	Apt Elev 1011
---------------------------	------------------------	----------------------------------	-------------------------

ILS RWY 26L

BRACKETT FIELD (POC)

⚠ Helicopter visibility reduction below 3/4 SM not authorized.
⚠ When local altimeter setting not received, use Ontario Intl altimeter setting and increase DA to 1366.
MISSED APPROACH: Climb to 2100, then climbing left turn to 4000 via POM VORTAC R-164 to PRADO INT/POM 9.3 DME.

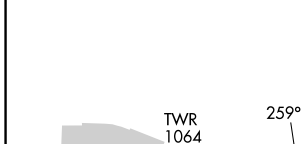
ATIS 124.4	SOCAL APP CON 125.5 318.2	BRACKETT TOWER* RWY 8R/26L 118.2 (CTAF)	RWY 8L/26R 133.3	GND CON 125.0	CLNC DEL 121.875	UNICOM 122.95
----------------------	-------------------------------------	------------------------------------------------------	----------------------------	-------------------------	----------------------------	-------------------------



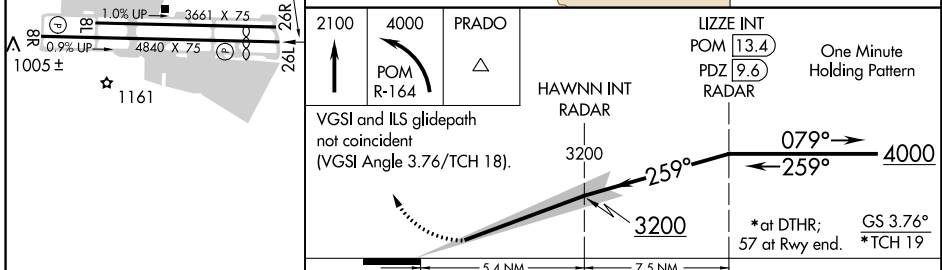
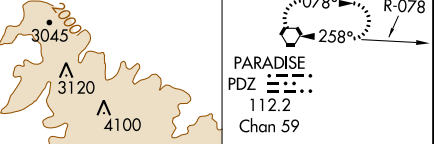
SW-3, 24 MAY 2018 to 21 JUN 2018

SW-3, 24 MAY 2018 to 21 JUN 2018

ELEV 1011	TDZE 1005
-----------	-----------



Procedure NA for arrivals at PDZ VORTAC on airway radials 292 CW 030.
 When GS not used, use LOC RWY 26L procedure.



REIL Rws 8R and 26L MIRL Rwy 8R-26L	CATEGORY	A	B	C	D
	S-ILS 26L	1335-1 330 (400-1)		NA	