

WAAS CH 70624 W26A	APP CRS 259°	Rwy Idg TDZE Apt Elev	4151 1005 1011
--	------------------------	-----------------------------	---

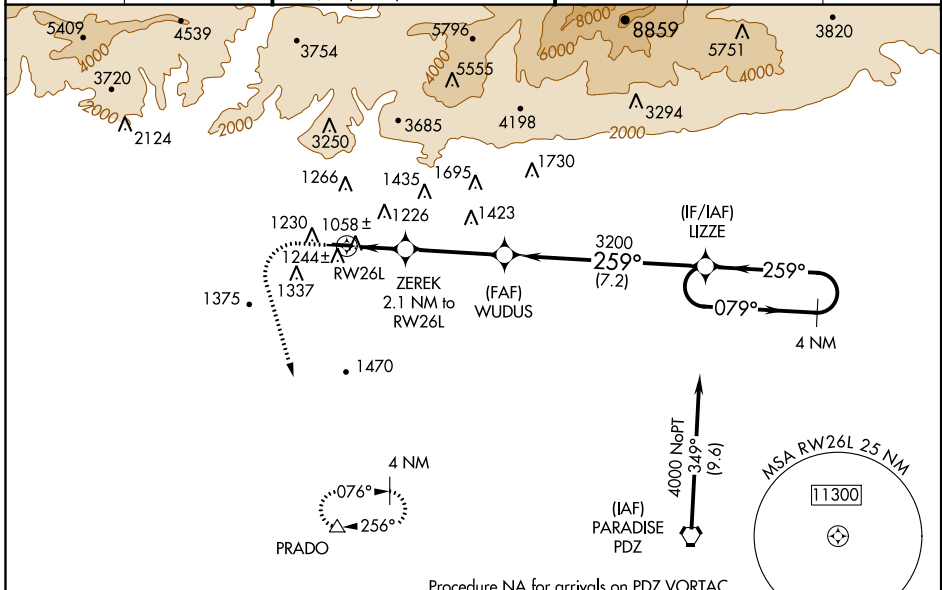
RNAV (GPS) RWY 26L

BRACKETT FIELD (POC)

⚠️ NA Night landing: Rwy 8L NA, Rwy 8R operational VGSI required, remain on or above VGSI glidepath until threshold. For uncompensated Baro-VNAV systems, LNAV/VNAV NA below -17°C (2°F) or above 54°C (130°F). When local altimeter setting not received, use Ontario Intl altimeter setting and increase all DA 31 feet and all MDA 40 feet, increase LPV and LNAV/VNAV all Cats visibility 1/8 mile. DME/DME RNP-0.3 NA. Helicopter visibility reduction below 3/4 SM not authorized. VDP and Baro-VNAV NA with Ontario Intl altimeter setting.

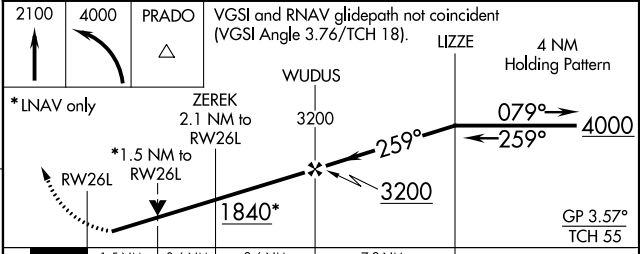
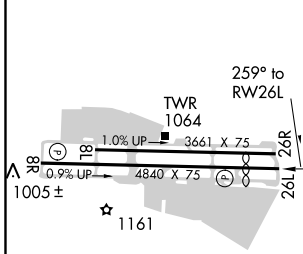
MISSED APPROACH: Climb to 2100 then climbing left turn to 4000 direct PRADO and hold.

ATIS 124.4	SOCAL APP CON 125.5 318.2	BRACKETT TOWER★ RWY 8R/26L 118.2 (CTAF)	RWY 8L/26R 133.3	GND CON 125.0	CLNC DEL 121.875	UNICOM 122.95
----------------------	-------------------------------------	--	----------------------------	-------------------------	----------------------------	-------------------------



Procedure NA for arrivals on PDZ VORTAC airway radials 278 CW 078.

ELEV 1011	TDZE 1005
-----------	-----------



CATEGORY	A	B	C	D
LPV DA	1315-7/8	310 (400-7/8)		NA
LNAV/VNAV DA	1409-1 1/8	404 (400-1 1/8)		NA
LNAV MDA	1620-1	615 (700-1)		NA
CIRCLING	1680-1	669 (700-1)		NA

SW-3, 24 MAY 2018 to 21 JUN 2018

SW-3, 24 MAY 2018 to 21 JUN 2018