

VORTAC POM 110.4 Chan 41	APP CRS 344°	Rwy Idg TDZE Apt Elev	N/A N/A 1011
---------------------------------------	------------------------	-----------------------------	---

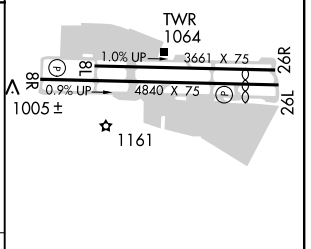
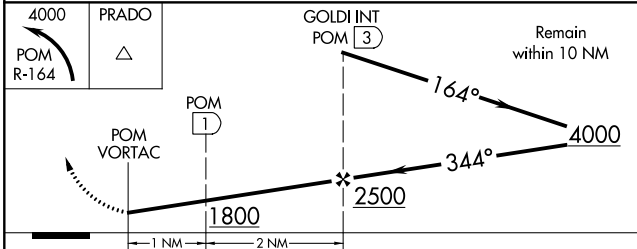
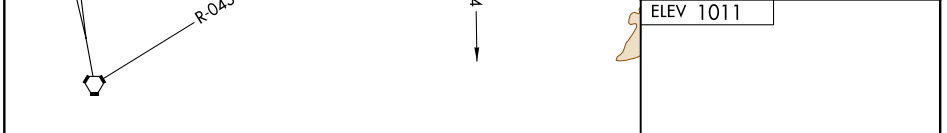
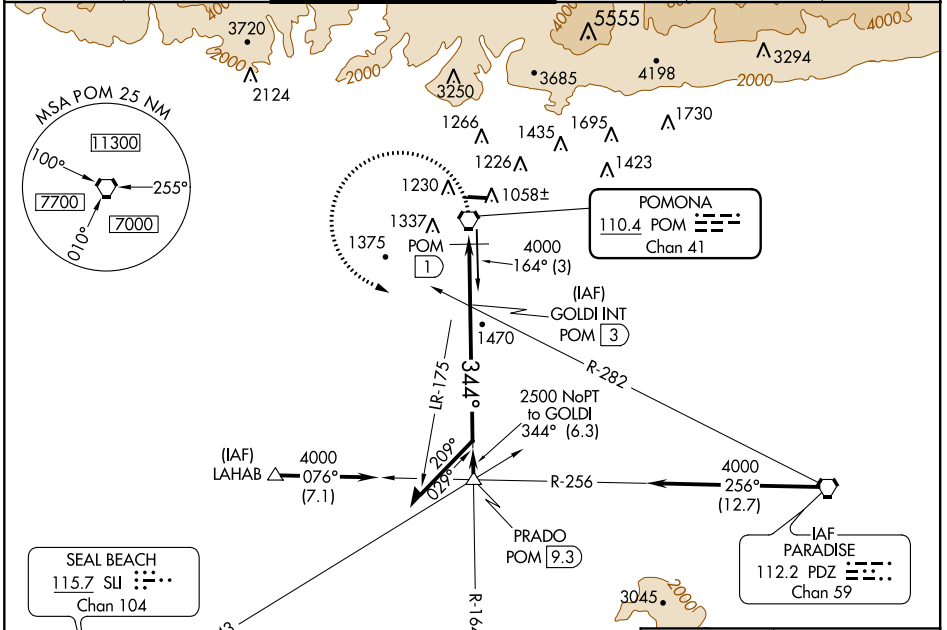
VOR or GPS-A

BRACKETT FIELD (POC)

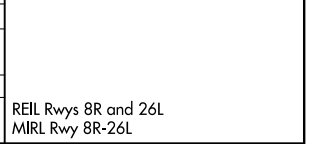
⚠ When local altimeter setting not received, use Ontario Intl altimeter setting and increase all MDA 40 feet and visibility Cat C ¼ mile. Night landing: Rwy 8L NA, Rwy 8R operational VGSI required, remain on or above VGSI glidepath until threshold. Helicopter visibility reduction below 1 SM not authorized.

MISSED APPROACH: Climbing left turn to 4000 via POM R-164 to PRADO INT.

ATIS 124.4	SOCAL APP CON 125.5 318.2	BRACKETT TOWER★ RWY 8R/26L 118.2 (CTAF) RWY 8L/26R 133.3	GND CON 125.0	CLNC DEL 121.875	UNICOM 122.95
----------------------	-------------------------------------	--	-------------------------	----------------------------	-------------------------



CATEGORY	A	B	C	D
CIRCLING	1800-1 789 (800-1)	1800-1¼ 789 (800-1¼)	1800-2¼ 789 (800-2¼)	NA
DME MINIMUMS				
CIRCLING	1640-1 629 (700-1)		1680-1¾ 669 (700-1¾)	NA



SW-3, 24 MAY 2018 to 21 JUN 2018

SW-3, 24 MAY 2018 to 21 JUN 2018