

WAAS CH 78417 W21A	APP CRS 218°	Rwy Idg TDZE 1449 Apt Elev 1470	4314
--	------------------------	---	-------------

RNAV (GPS) RWY 21

DEVILS LAKE RGNL (DVL)

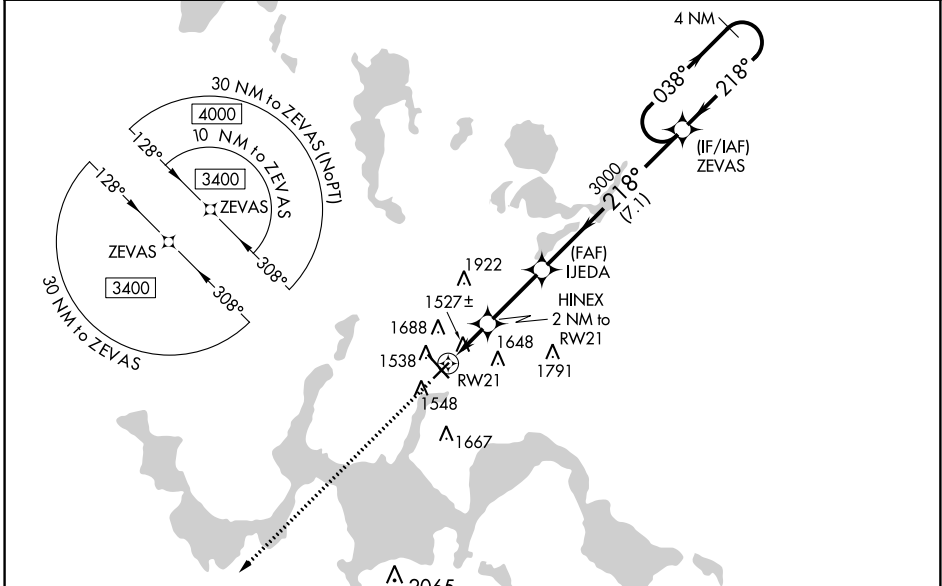
⚠ For uncompensated Baro-VNAV systems, LNAV/VNAV NA below -17°C (2°F) or above 54°C (130°F). DME/DME RNP-0.3 NA. Helicopter visibility reduction below 3/4 SM NA. Baro-VNAV NA when using Cando altimeter setting. VDP NA with Cando altimeter setting. When local altimeter setting not received, use Cando altimeter setting and increase all DA 63 feet, and all MDA 80 feet, increase LNAV and Circling Cats C and D visibility 1/4 mile.

MISSED APPROACH: Climb to 3400 direct ZIKID and hold.

AWOS-3PT
125.875

GRAND FORKS RADIO
122.3

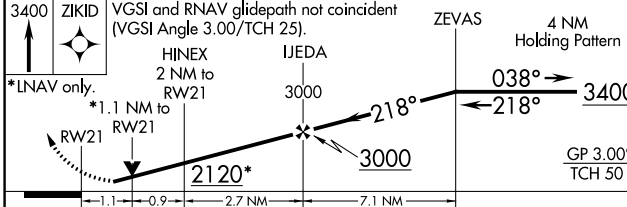
UNICOM
122.8 (CTAF) ①



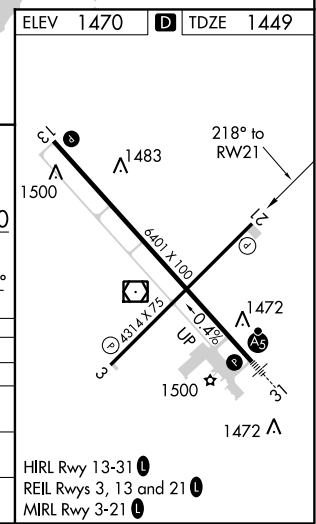
NC-1, 24 MAY 2018 to 21 JUN 2018

NC-1, 24 MAY 2018 to 21 JUN 2018

ELEV 1470	D TDZE 1449
-----------	--------------------



CATEGORY	A	B	C	D
LPV DA		1699-1	250 (300-1)	
LNAV/VNAV DA		1699-1	250 (300-1)	
LNAV MDA		1800-1	351 (400-1)	
C CIRCLING	2000-1	530 (600-1)	2240-2 1/4 770 (800-2 1/4)	2240-2 1/2 770 (800-2 1/2)



HIRL Rwy 13-31 ①
REIL Rwy 3, 13 and 21 ①
MIRL Rwy 3-21 ①