

APP CRS <b>263°</b>	Rwy Idg <b>3779</b>
	TDZE <b>632</b>
	Apt Elev <b>634</b>

# RNAV (GPS) RWY 26

GRIFFITH-MERRILLVILLE (Ø5C)

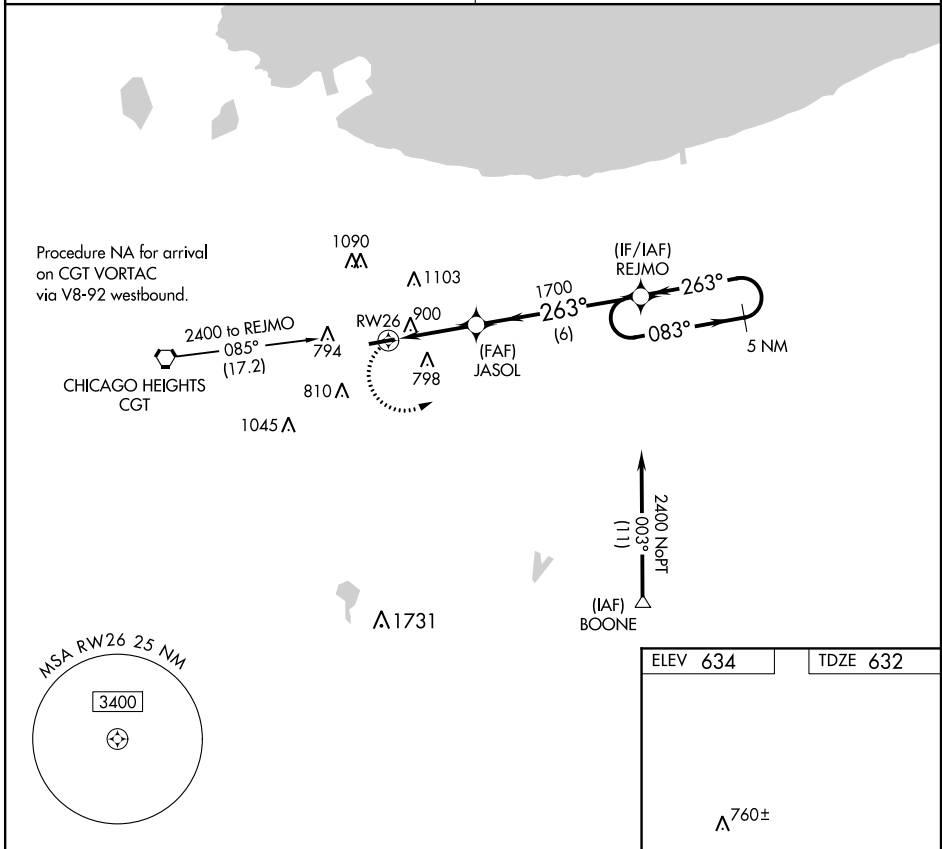
RNP APCH

Obtain local altimeter setting on CTAF; when not received use Chicago Midway Initial altimeter setting and increase all MDAs 60 feet. Visibility reduction by helicopters NA. Procedure NA at night.

MISSED APPROACH: Climbing left turn to 2400 direct REJMO and hold.

CHICAGO APP CON  
**133.1 285.6**

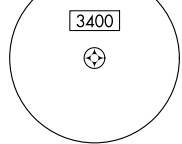
UNICOM  
**123.0 (CTAF)**



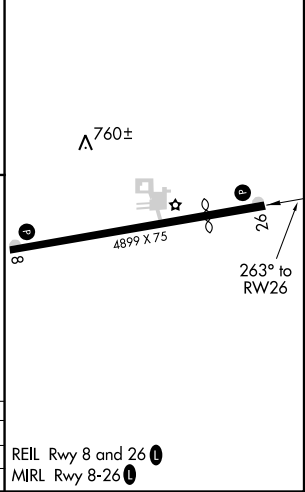
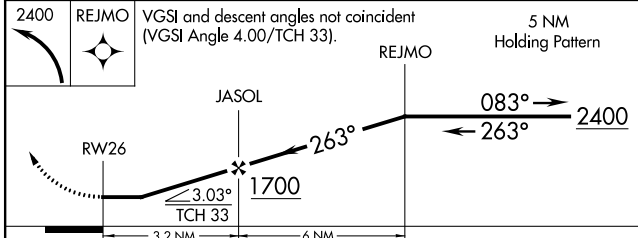
EC-2, 24 MAY 2018 to 21 JUN 2018

EC-2, 24 MAY 2018 to 21 JUN 2018

MSA RW26 25 NM



ELEV 634	TDZE 632
----------	----------



CATEGORY	A	B	C	D
LNAV MDA	1160-1	528 (600-1)		NA
CIRCLING	1200-1	566 (600-1)		NA

REIL Rwy 8 and 26  
MIRL Rwy 8-26