

VORTAC PDZ <b>112.2</b> Chan 59	APP CRS <b>096°</b>	Rwy Idg TDZE Apt Elev <b>N/A</b> <b>N/A</b> <b>296</b>
---------------------------------------	------------------------	---

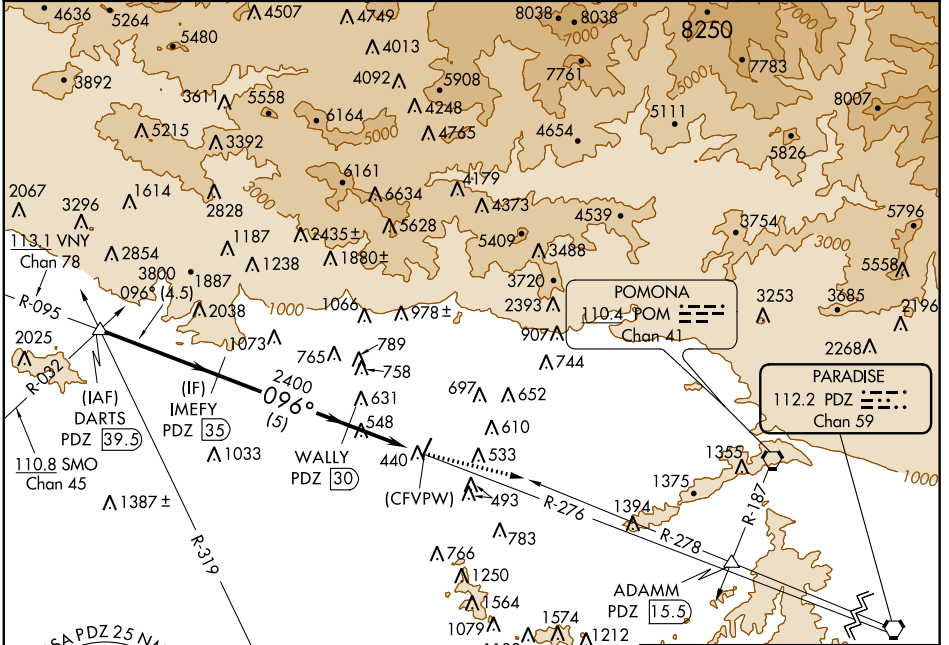
# VOR or GPS-B

## SAN GABRIEL VALLEY (EMT)

**⚠** When local altimeter setting not received, use Ontario Intl altimeter setting and increase all MDA's 140 feet. Helicopter visibility reduction below 1 SM NA. Circling Rwy 1 NA at night. DME required.

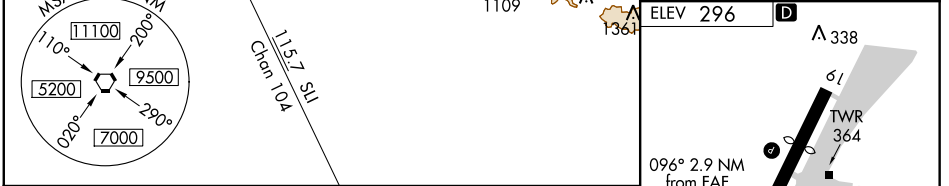
**MISSED APPROACH:** Climb to 2500 on PDZ R-278 to ADAMM Int/PDZ 15.5 DME then continue climb to 4000 to PDZ VORTAC.

ATIS <b>118.75</b>	SOCAL APP CON <b>125.5 318.2</b>	EL MONTE TOWER* <b>121.2 (CTAF) 0</b>	GND CON <b>125.9</b>	UNICOM <b>122.95</b>
-----------------------	-------------------------------------	--	-------------------------	-------------------------



SW-3, 24 MAY 2018 to 21 JUN 2018

SW-3, 24 MAY 2018 to 21 JUN 2018



DARTS PDZ 39.5	IMEFY PDZ 35	2500 ↑ PDZ R-278	ADAMM △	4000 ↑	PDZ ⬠
5000	3800	2400	WALLY PDZ 30	(CFVPW) PDZ 27.1	
4.5 NM		5 NM		2.9 NM	
CATEGORY	A	B	C	D	
CIRCLING	1340-1½ 1044 (1100-1½)		NA		

