

WAAS CH <b>90424</b> <b>W22A</b>	APP CRS <b>220°</b>	Rwy Idg TDZE <b>35</b> Apt Elev <b>35</b>
--	------------------------	---

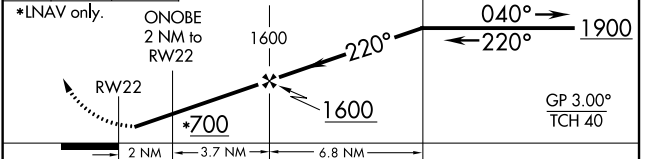
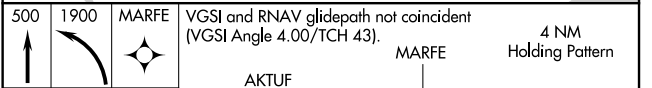
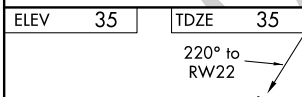
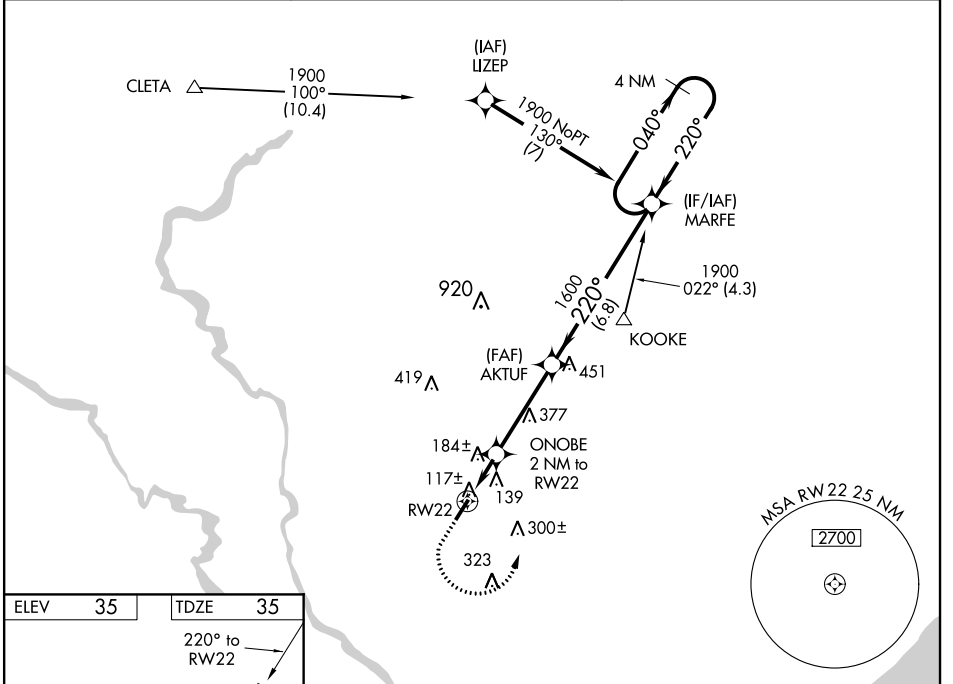
# RNAV (GPS) RWY 22

CONWAY-HORRY COUNTY (HYW)

**⚠** For uncompensated Baro-VNAV systems, LNAV/VNAV NA below -15°C (5°F) or above 43°C (109°F). DME/DME RNP-0.3 NA. Helicopter visibility reduction below 1 SM NA. When local altimeter setting not received, use Myrtle Beach altimeter setting and increase all DA 32 feet and all MDA 40 feet; increase LNAV/VNAV all Cats visibility 1/8 mile and LNAV Cats C and D visibility 1/4 mile. Baro-VNAV NA when using Myrtle Beach altimeter setting. When VGSi inop, Straight-in/Circling Rwy 22 procedure NA at night.

**⚠** MISSED APPROACH: Climb to 500 then climbing left turn to 1900 direct MARFE and hold.

AWOS-3 <b>119.525</b>	MYRTLE BEACH APP CON★ <b>127.4 257.95</b>	UNICOM <b>122.7 (CTAF) 0</b>
--------------------------	--	---------------------------------



CATEGORY	A	B	C	D
LPV DA	285-1 250 (300-1)			
LNAV/VNAV DA	438-1 3/8 403 (500-1 3/8)			
LNAV MDA	440-1	405 (500-1)	440-1 1/8	405 (500-1 1/8)
CIRCLING	520-1	485 (500-1)	520-1 1/2 485 (500-1 1/2)	600-2 565 (600-2)

REIL Rws 4 and 22  
MIRL Rwy 4-22 0

SE-2, 24 MAY 2018 to 21 JUN 2018

SE-2, 24 MAY 2018 to 21 JUN 2018