

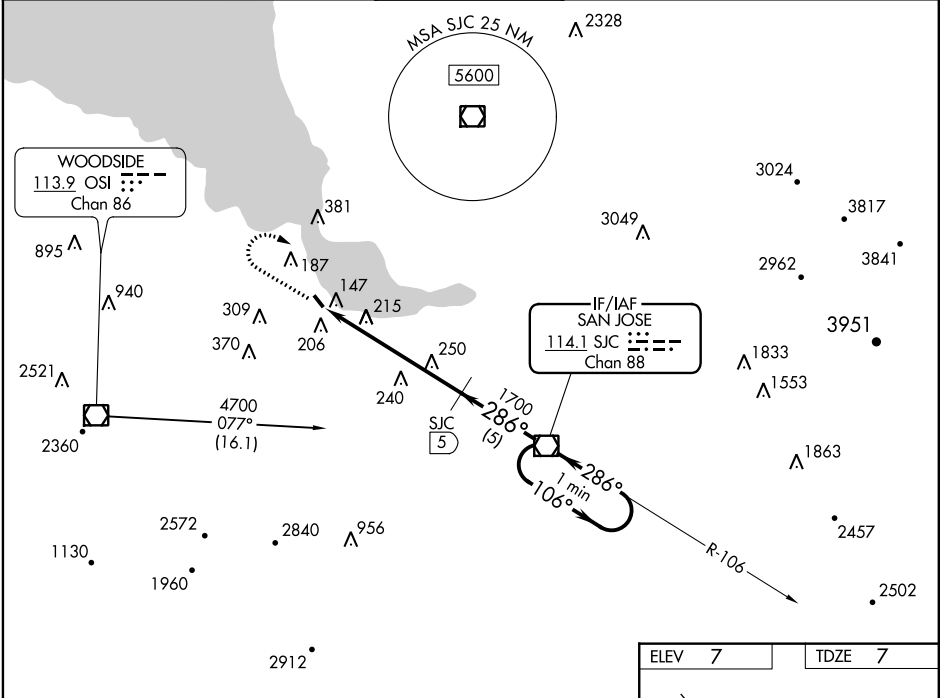
VOR/DME SJC <b>114.1</b> Chan <b>88</b>	APP CRS <b>286°</b>	Rwy Idg <b>2443</b> TDZE <b>7</b> Apt Elev <b>7</b>
---	------------------------	---

# VOR/DME RWY 31

PALO ALTO (PAO)

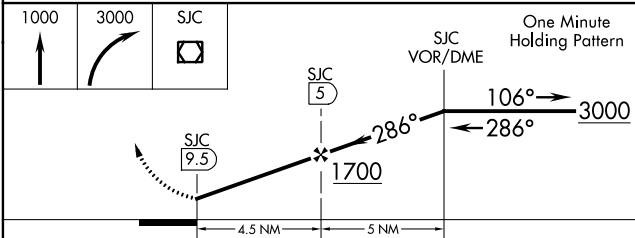
<p><b>▼</b> Circling NA SW of Rwy 13-31. <b>▲</b> When control tower closed, use Norman Y Mineta San Jose Intl altimeter setting.</p>	<p>MISSED APPROACH: Climb to 1000 then climbing right turn to 3000 direct SJC VOR/DME and hold.</p>
---	---

ATIS <b>135.275</b>	NORCAL APP CON <b>121.3 270.35</b>	<b>PALO ALTO TOWER*</b> <b>118.6 (CTAF)</b>	GND CON <b>125.0</b>	UNICOM <b>122.95</b>
------------------------	---------------------------------------	--	-------------------------	-------------------------



SW-2, 24 MAY 2018 to 21 JUN 2018

SW-2, 24 MAY 2018 to 21 JUN 2018



CATEGORY	A	B	C	D
S-31	500-1	493 (500-1)		NA
CIRCLING	500-1 493 (500-1)	540-1 533 (600-1)		NA
NORMAN Y MINETA SAN JOSE INTL ALTIMETER SETTING MINIMUMS				
S-31	540-1	533 (600-1)		NA
CIRCLING	540-1 533 (600-1)	580-1 573 (600-1)		NA

