

APP CRS <b>297°</b>	Rwy Idg TDZE Apt Elev	<b>2600</b> <b>5</b> <b>5</b>
------------------------	-----------------------------	-------------------------------------

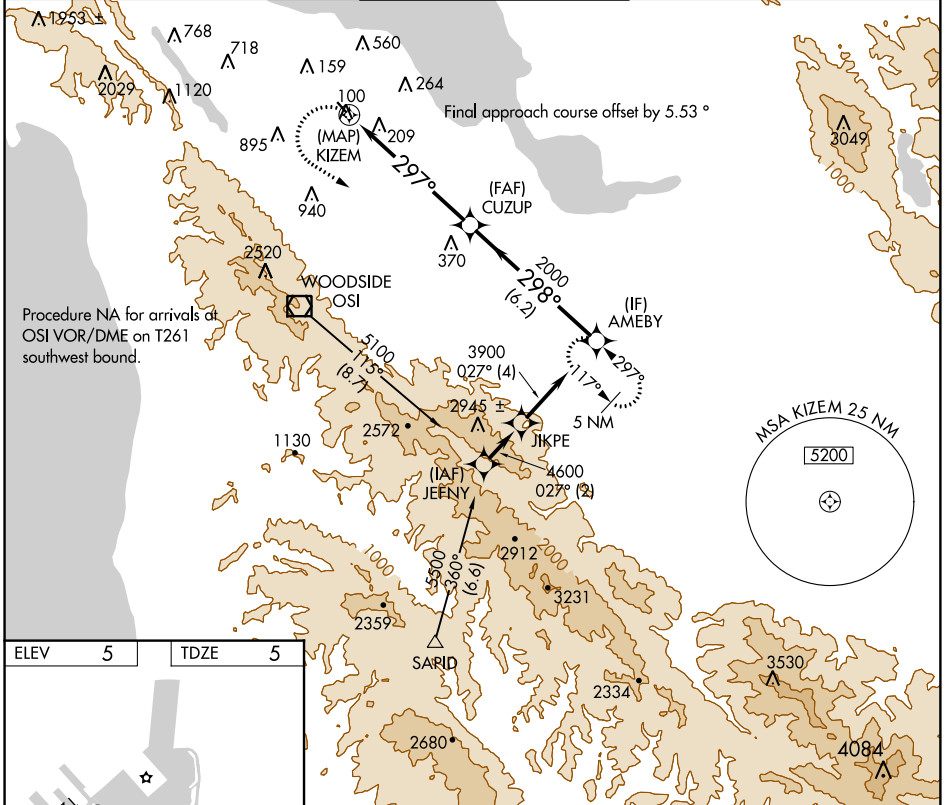
# RNAV (GPS) Y RWY 30

SAN CARLOS (SQL)

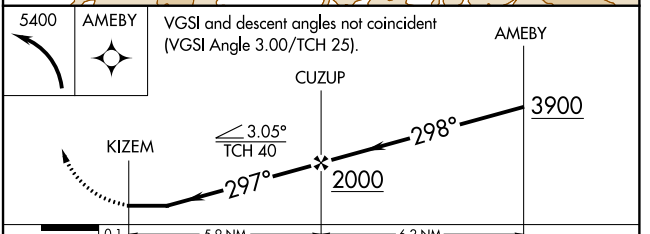
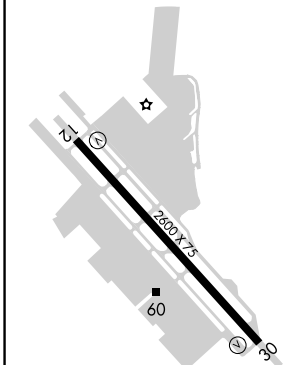
**▼** DME/DME RNP-0.3 NA. When local altimeter setting not received, use San Francisco Intl altimeter setting and increase all MDA 40 feet.  
**▲** Rwy 30 visibility reduction by helicopters below 1 SM NA. Circling NA west of Rwy 12-30.

**MISSED APPROACH:** Climbing left turn to 5400 direct AMEBY and hold, continue climb-in-hold to 5400.

ATIS <b>125.9</b>	NORCAL APP CON <b>133.95 317.6</b>	SAN CARLOS TOWER ★ <b>119.0 (CTAF) 0 326.2</b>	GND CON <b>121.6</b>	UNICOM <b>122.95</b>
----------------------	---------------------------------------	---	-------------------------	-------------------------



ELEV	5	TDZE	5
------	---	------	---



CATEGORY	A	B	C	D
LNAV MDA	1260-1¼	1255 (1300-1¼)	NA	
CIRCLING	1260-1¼ 1255 (1300-1¼)	1260-1½ 1255 (1300-1½)	NA	

SW-2, 24 MAY 2018 to 21 JUN 2018

SW-2, 24 MAY 2018 to 21 JUN 2018