

APP CRS	Rwy Idg	2600
297°	TDZE	5
	Apt Elev	5

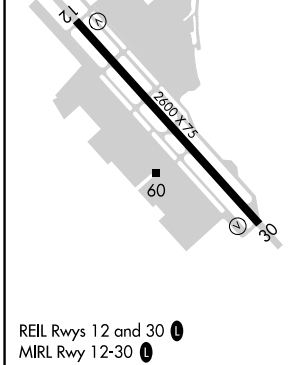
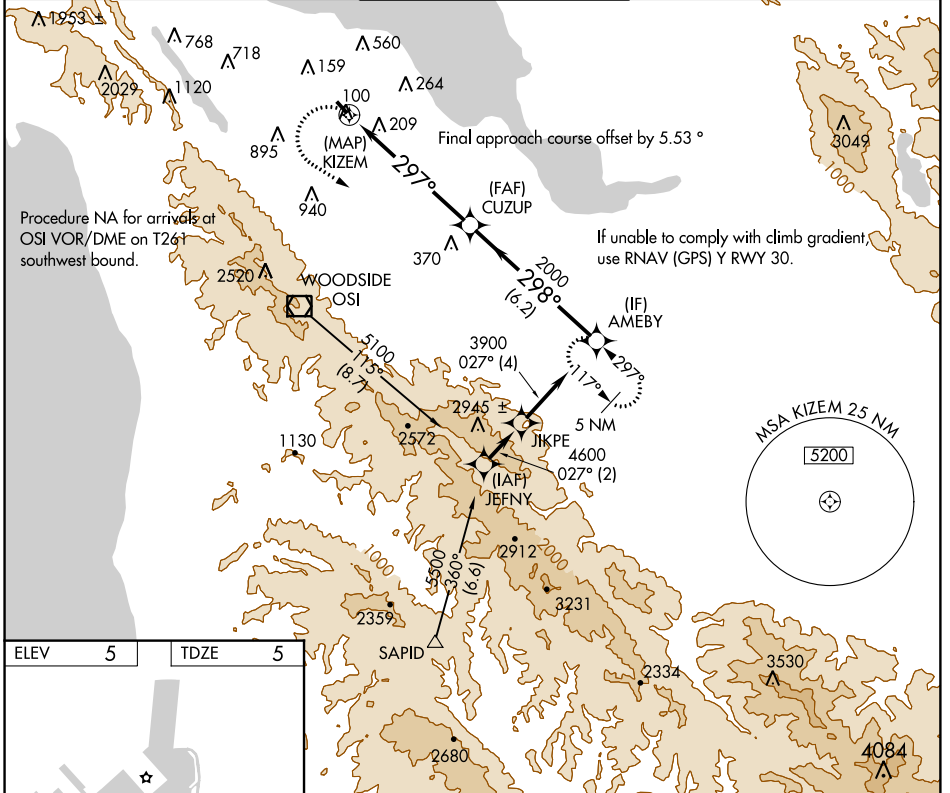
RNAV (GPS) Z RWY 30

SAN CARLOS (SQL)

⚠ DME/DME RNP-0.3 NA. When local altimeter setting not received, use San Francisco Intl altimeter setting and increase all MDA 40 feet. Rwy 30 visibility reduction by helicopters below 1 SM NA.

⚠ MISSED APPROACH: Climbing left turn to 5400 direct AMEBY and hold, continue climb-in-hold to 5400. Missed approach requires minimum climb of 302 feet per NM to 5400.

ATIS 125.9	NORCAL APP CON 133.95 317.6	SAN CARLOS TOWER ★ 119.0 (CTAF) 0 326.2	GND CON 121.6	UNICOM 122.95
----------------------	---------------------------------------	---	-------------------------	-------------------------



SAN CARLOS, CALIFORNIA
Amdt 1B 27APR17

ELEV	5	TDZE	5
5400	AMEBY	VGSI and descent angles not coincident (VGSI Angle 3.00/TCH 25).	
CATEGORY	A	B	C D
LNAV MDA	900-1¼ 895 (900-1¼)	900-1½ 895 (900-1½)	NA

37°31'N-122°15'W

RNAV (GPS) Z RWY 30

SAN CARLOS (SQL)

SW-2, 24 MAY 2018 to 21 JUN 2018

SW-2, 24 MAY 2018 to 21 JUN 2018