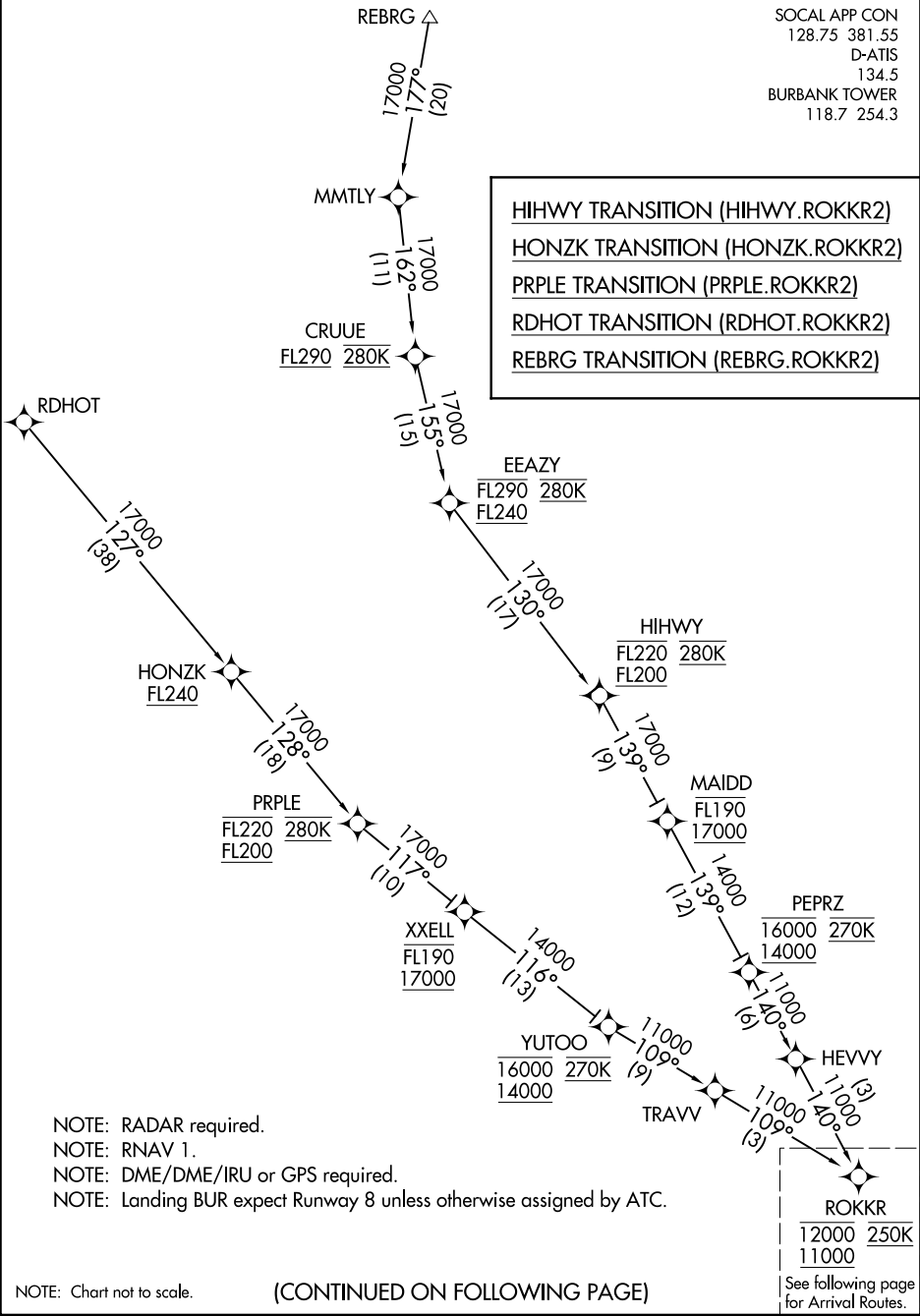


SOCAL APP CON  
128.75 381.55  
D-ATIS  
134.5  
BURBANK TOWER  
118.7 254.3

- HIHWY TRANSITION (HIHWY.ROKKR2)
- HONZK TRANSITION (HONZK.ROKKR2)
- PRPLE TRANSITION (PRPLE.ROKKR2)
- RDHOT TRANSITION (RDHOT.ROKKR2)
- REBRG TRANSITION (REBRG.ROKKR2)



NOTE: RADAR required.  
 NOTE: RNAV 1.  
 NOTE: DME/DME/IRU or GPS required.  
 NOTE: Landing BUR expect Runway 8 unless otherwise assigned by ATC.

NOTE: Chart not to scale.

(CONTINUED ON FOLLOWING PAGE)

See following page for Arrival Routes.

SW-3, 21 JUN 2018 to 19 JUL 2018

SW-3, 21 JUN 2018 to 19 JUL 2018