


APP CRS	Rwy Idg	<b>5801</b>
<b>079°</b>	TDZE	<b>727</b>
	Apt Elev	<b>778</b>

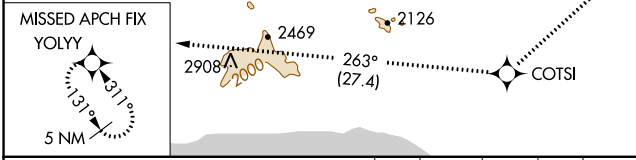
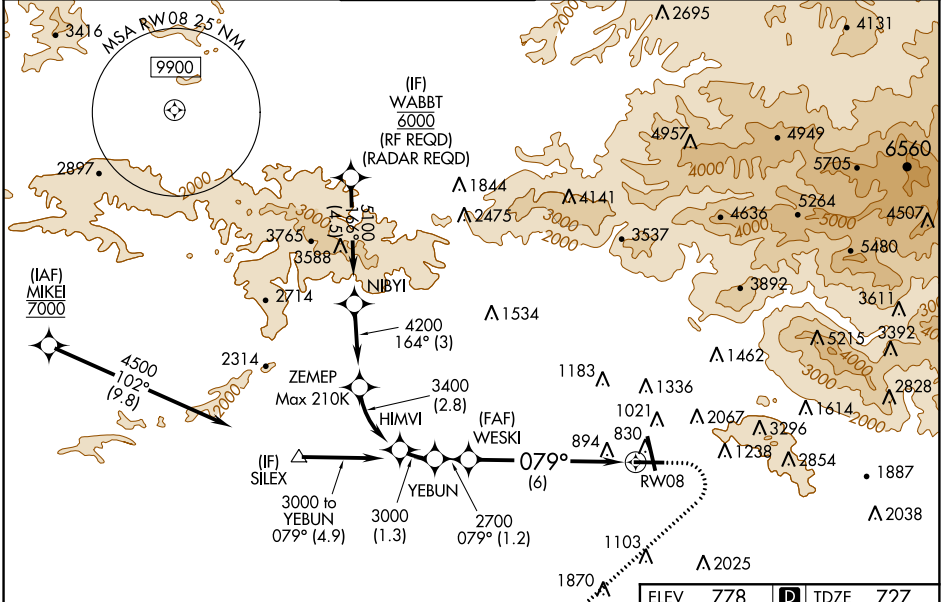
# RNAV (RNP) Y RWY 8

BOB HOPE (BUR)

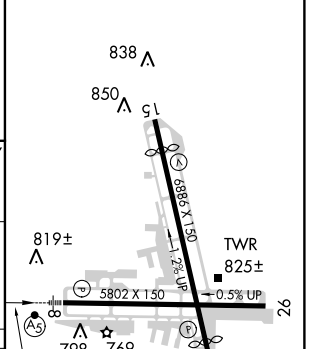
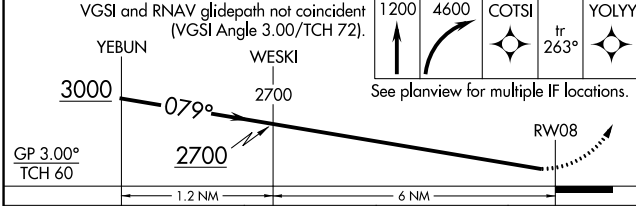
**▽** Inop table does not apply to RNP 0.20\* all Cats.  
**▲** For uncompensated Baro-VNAV systems, procedure NA below 1°C (34°F) or above 54°C (130°F).  
 GPS required. When Circling to Rwy 8 at night, operational VGSI required, remain on or above VGSI glidepath until threshold. For inop MALS/R, increase RNP 0.30# all Cats visibility to 1/8 SM.

**MALS/R**  
  
**MISSED APPROACH:** Climb to 1200 then climbing right turn to 4600 direct COTS/1 and on track 263° to YOLYY and hold.  
 \*Missed approach requires minimum climb of 340 feet per NM to 2400.  
 # Missed approach requires minimum climb of 317 feet per NM to 2400.

D-ATIS	SOCAL APP CON	BURBANK TOWER	GND CON	CLNC DEL	CPDLC
<b>134.5</b>	<b>134.2 338.2</b>	<b>118.7 254.3</b>	<b>123.9 348.6</b>	<b>118.0 348.6</b>	



ELEV	<b>778</b>	<b>D</b>	TDZE	<b>727</b>
------	------------	----------	------	------------



CATEGORY	A	B	C	D
RNP 0.20 DA*		1055/50	328 (300-1)	
RNP 0.30 DA#		1151/50	424 (400-1)	
RNP 0.30 DA		1485-2½	758 (800-2½)	

## AUTHORIZATION REQUIRED

MIRL Rwy 15-33  
 HIRL Rwy 8-26  
 REIL Rws 15, 26 and 33

SW-3, 21 JUN 2018 to 19 JUL 2018

SW-3, 21 JUN 2018 to 19 JUL 2018