


WAAS CH 53638 W08A	APP CRS 079°	Rwy Idg TDZE 5801 727 Apt Elev 778
--	------------------------	--

RNAV (GPS) Z RWY 8

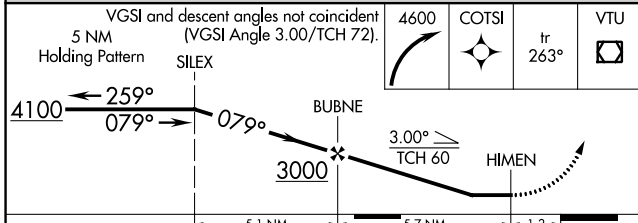
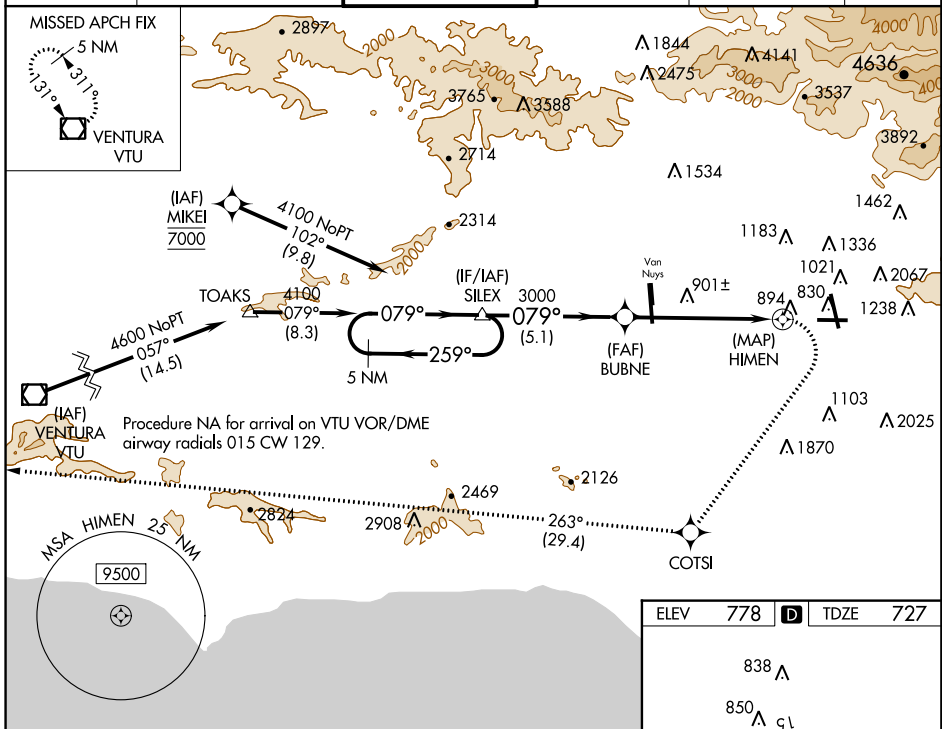
BOB HOPE (BUR)

⚠ Circling Rwy 26 NA at night. DME/DME RNP-0.3 NA. Circling NA for Cats A/B/C northeast of Rwy 15 and 26. Circling NA for Cat D east of Rwy 15-33. Straight-in Rwy 8 at night, Circling Rwy 33 at night, operational VGSI required, remain on or above VGSI glidepath until threshold. For inop ALS, increase LP Cat A/B visibility to 1½ SM, and Cat C/D visibility to 2½ SM. For inop ALS, increase LNAV Cat A/B visibility to 1½ SM. Rwy 8 helicopter visibility reduction below RVR 5000 NA.

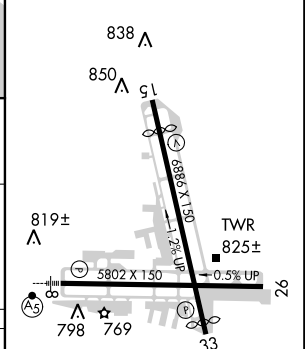
MALSR


MISSED APPROACH:
Climbing right turn to 4600 direct COTSI and on track 263° to VTU VOR/DME and hold.

D-ATIS 134.5	SOCAL APP CON 134.2 338.2	BURBANK TOWER 118.7 254.3	GND CON 123.9 348.6	CLNC DEL 118.0 348.6	CPDLC
------------------------	-------------------------------------	-------------------------------------	-------------------------------	--------------------------------	-------



ELEV	778	D	TDZE	727
------	-----	----------	------	-----



CATEGORY	A	B	C	D
LP MDA	1540/60	813 (800-1½)	1540-1⅞	813 (800-1⅞)
LNAV MDA	1640/60	913 (900-1½)	1640-2	913 (900-2)
C CIRCLING	1640-1½	862 (900-1½)	2240-3 1462 (1500-3)	2320-3 1542 (1600-3)

MIRL Rwy 15-33
HIRL Rwy 8-26
REIL Rwys 15, 26, and 33

SW-3, 21 JUN 2018 to 19 JUL 2018

SW-3, 21 JUN 2018 to 19 JUL 2018