

VOR/DME VNY	APP CRS	Rwy Idg	<b>5801</b>
<b>113.1</b>	<b>089°</b>	TDZE	<b>727</b>
Chan <b>78</b>		Apt Elev	<b>778</b>

# VOR RWY 8

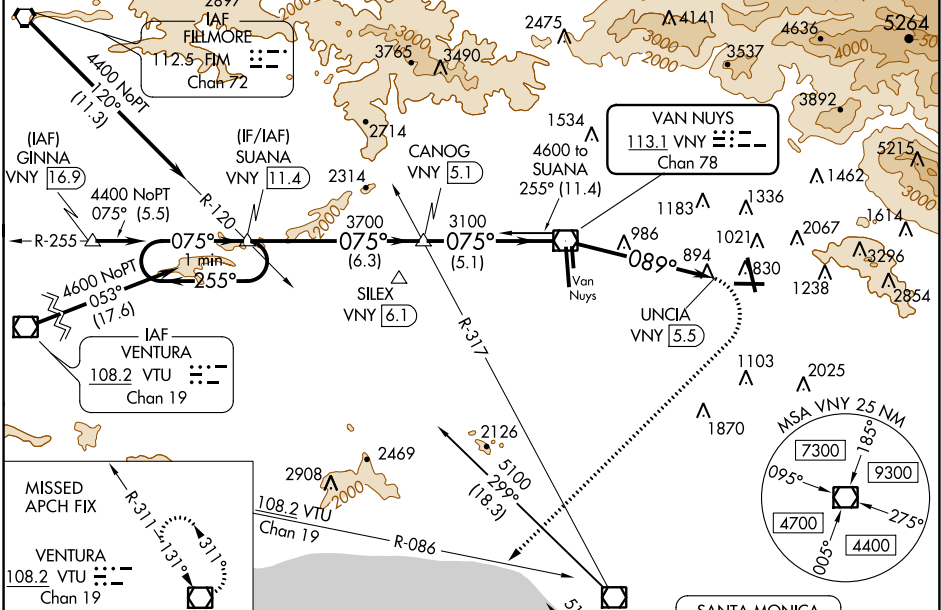
BOB HOPE (BUR)

**⚠** Inop table does not apply. Helicopter visibility reduction below 1 SM NA. Circling NA for Cats A/B/C northeast of Rwy 15 and 26. Circling NA for Cat D east of Rwy 15-33. Night landing: Rwy 26 NA. Night landing: Rwy 8, 33 operational VGSJ required. Remain on or above VGSJ glidepath until threshold.

**MALS**  MISSED APPROACH: Climbing right turn to 4600 on heading 210° and VTU VOR/DME R-086 to VTU VOR/DME and hold.

D-ATIS	SOCAL APP CON	BURBANK TOWER	GND CON	CLNC DEL	CPDLC
<b>134.5</b>	<b>134.2 338.2</b>	<b>118.7 254.3</b>	<b>123.9 348.6</b>	<b>118.0 348.6</b>	

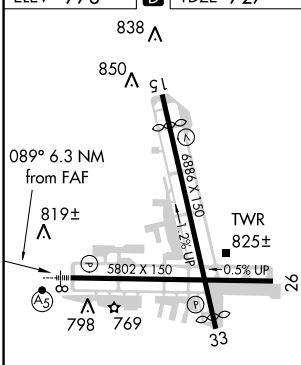
Procedure NA for arrivals at FIM VORTAC airway radials 087 CW 148.



SW-3, 21 JUN 2018 to 19 JUL 2018

SW-3, 21 JUN 2018 to 19 JUL 2018

ELEV 778	<b>D</b>	TDZE 727
----------	----------	----------

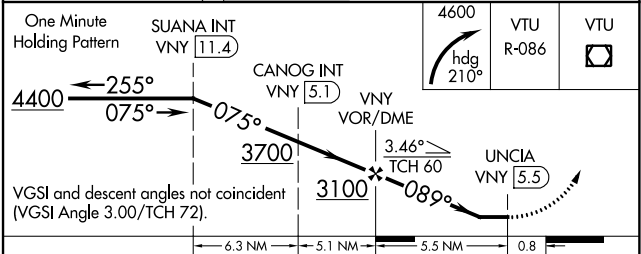
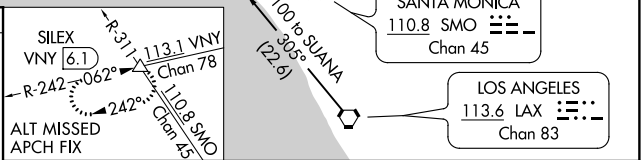


MIRL Rwy 15-33  
HIRL Rwy 8-26  
REIL Rws 15, 26 and 33

FAF to MAP 5.5 NM

Knots	60	90	120	150	180
Min:Sec	5:30	3:40	2:45	2:12	1:50

**C** CIRCLING



CATEGORY	A	B	C	D
S-8	1600/55 873 (900-1¼)	1600/60 873 (900-1¼)	1600-2½	873 (900-2½)
<b>C</b> CIRCLING	1600-1¼ 822 (900-1¼)	1640-1¼ 862 (900-1¼)	2240-3 1462 (1500-3)	2320-3 1542 (1600-3)