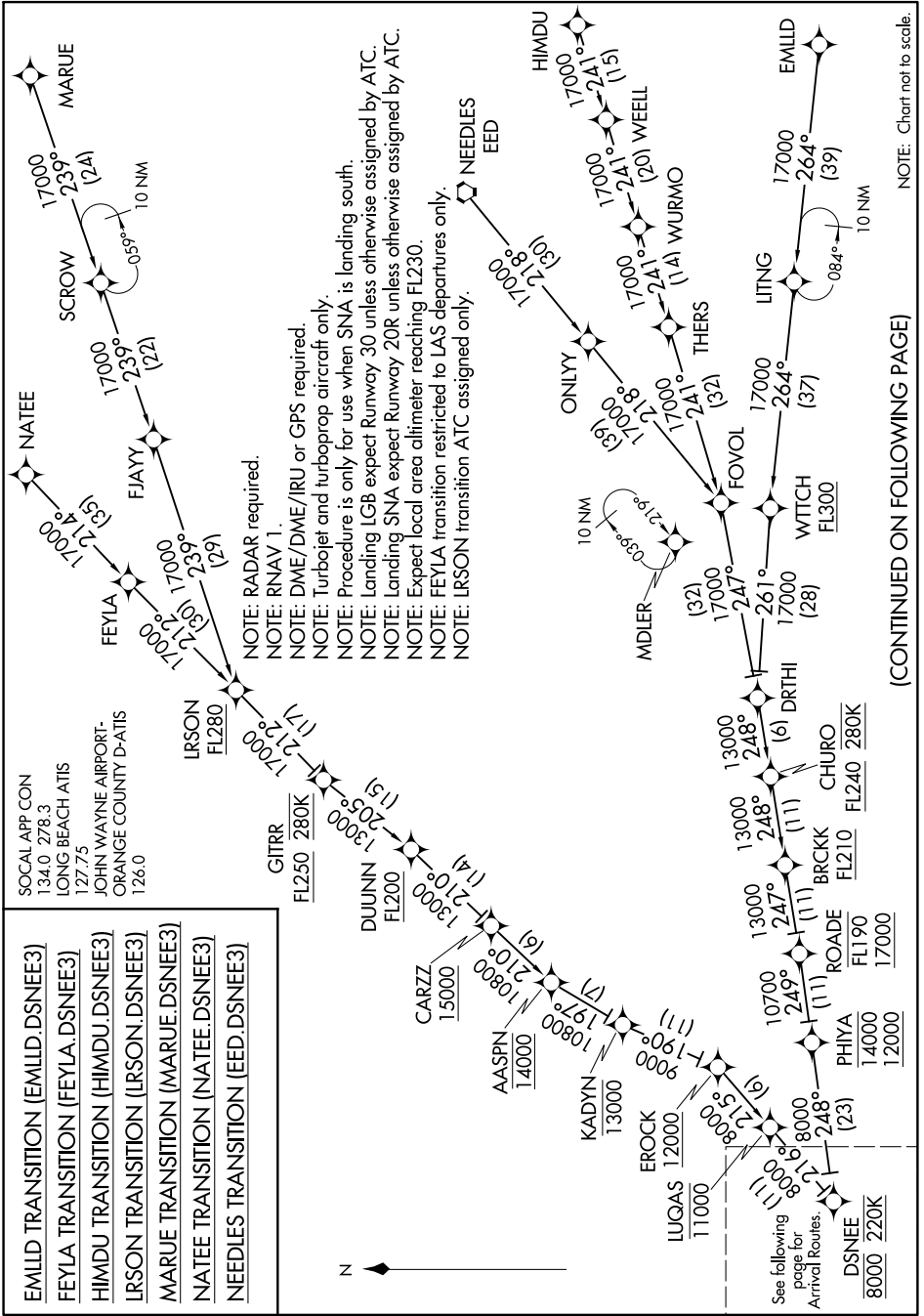


DSNEE THREE ARRIVAL (RNAV) Transition Routes

LONG BEACH, CALIFORNIA

SW-3, 21 JUN 2018 13:03:00



NOTE: RADAR required.
 NOTE: RNAV 1.
 NOTE: DME/DME/IRU or GPS required.
 NOTE: Turbopjet and turboprop aircraft only.
 NOTE: Procedure is only for use when SNA is landing south.
 NOTE: Landing LGB expect Runway 30 unless otherwise assigned by ATC.
 NOTE: Landing SNA expect Runway 20R unless otherwise assigned by ATC.
 NOTE: Expect local area altimeter reaching FL230.
 NOTE: FEYLA transition restricted to LAS departures only.
 NOTE: LIRSON transition ATC assigned only.

NOTE: Chart not to scale.

(CONTINUED ON FOLLOWING PAGE)

SW-3, 21 JUN 2018 to 19 JUL 2018

DSNEE THREE ARRIVAL (RNAV) Transition Routes

LONG BEACH, CALIFORNIA