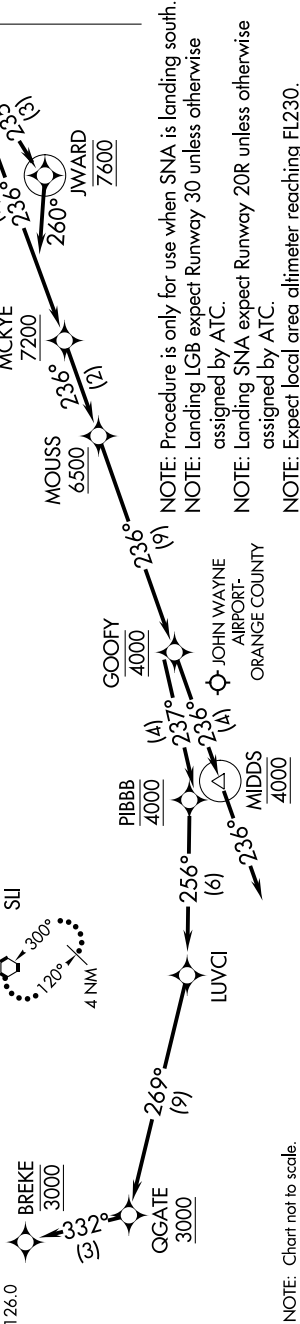


8102 707 61 to 19 10102 2018 12 'E-WS

SOCAL APP CON
134.0 278.3
LONG BEACH ATIS 127.75
JOHN WAYNE AIRPORT-
ORANGE COUNTY D-ATIS
126.0

SEAL BEACH
SIU
LONG BEACH/DAUGHERTY FIELD



NOTE: RADAR required.
NOTE: RNAV 1.
NOTE: DME/DME/IRU or GPS required.
NOTE: Turbojet and turboprop aircraft only.

NOTE: Procedure is only for use when SNA is landing south.
NOTE: Landing LGB expect Runway 30 unless otherwise assigned by ATC.
NOTE: Landing SNA expect Runway 20R unless otherwise assigned by ATC.
NOTE: Expect local area altimeter reaching FL230.

NOTE: Chart not to scale.

ARRIVAL ROUTE DESCRIPTION

LANDING LGB RUNWAY 12: From DSNEE on track 236° to cross MCKYE at or above 7200, then on track 236° to cross MOUSS at or above 6500, then on track 236° to cross GOOFOY at 4000, then on track 237° to cross PIBBB at 4000, then on track 256° to LUVCI, then on track 269° to cross QGATE at or above 3000, then on track 332° to cross BREKE at 3000. Expect RNAV (RNP) RWY 12 approach.

LANDING LGB RUNWAYS 25R, 30: From DSNEE on track 236° to cross MCKYE at or above 7200, then on track 236° to cross MOUSS at or above 6500, then on track 236° to cross GOOFOY at 4000, then on track 236° to cross MIDS at 4000, then on track 236° Expect ILS or RNAV (RNP) RWY 30 approach, or RNAV (RNP) RWY 25R approach.

LANDING SNA: From DSNEE on track 235° to cross JWARD at 7600, then on heading 260° or as assigned by ATC. Expect RADAR vectors to ILS or RNAV (RNP) RWY 20R final approach course.

LOST COMMUNICATIONS: In the event of lost communications:
LANDING LGB RUNWAYS 25R, 30: After MIDS proceed on the RNAV (RNP) RWY 30 or ILS RWY 30 approach.
LANDING LGB RUNWAY 12: After BREKE proceed on the RNAV (RNP) RWY 12 approach, if unable approach, after MIDS/BREKE climb to 4000 direct SIU VORTAC and hold.
LANDING SNA RUNWAY 20R: After DSNEE proceed on the RNAV (RNP) RWY 20R approach. If unable approach, after DSNEE maintain 6000 direct SIU VORTAC and hold.

SW-3, 21 JUN 2018 to 19 JUL 2018