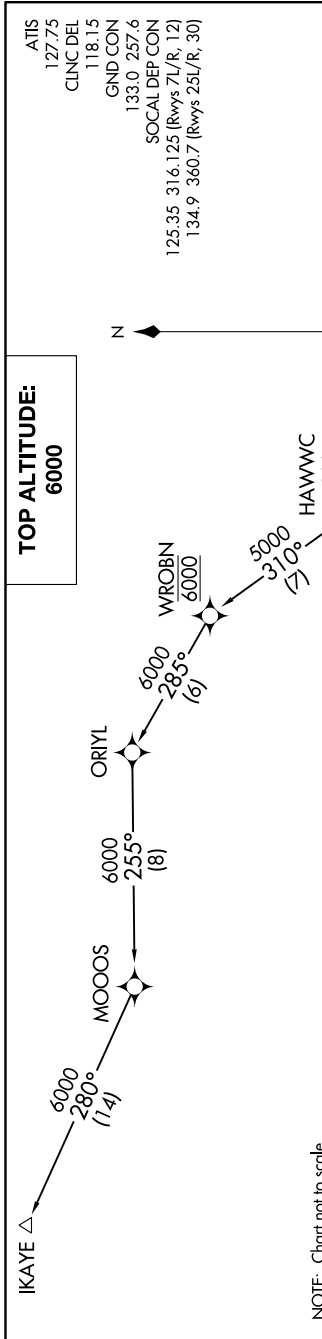


SW-3, 21 JUN 2018 to 19 JUL 2018



TOP ALTITUDE: 6000

- ATIS 127.75
- CINC DEL 118.15
- GND CON 133.0 257.6
- SOCAL DEP CON 125.35 316.125 (Rwys 7L/R, 12)
- 134.9 360.7 (Rwys 25L/R, 30)



NOTE: Chart not to scale.

DEPARTURE ROUTE DESCRIPTION

TAKEOFF RUNWAYS 7L/R: Climb heading 076° to 580, then on heading 076° or as assigned by ATC, expect vectors to PIJIN, cross PIJIN at or above 4000, then on track 290° to cross HAWWC at or above 5000, thence

TAKEOFF RUNWAY 12: Climb heading 121° to 580, then on heading 121° or as assigned by ATC, expect vectors to PIJIN, cross PIJIN at or above 4000, then on track 290° to cross HAWWC at or above 5000, thence

TAKEOFF RUNWAY 25L: Climb heading 256° to 800, then on heading 270° or as assigned by ATC, expect vectors to PIJIN, cross PIJIN at or above 4000, then on track 290° to cross HAWWC at or above 5000, thence

TAKEOFF RUNWAY 25R: Climb heading 256° to 580, then on heading 270° or as assigned by ATC, expect vectors to PIJIN, cross PIJIN at or above 4000, then on track 290° to cross HAWWC at or above 5000, thence

TAKEOFF RUNWAY 30: Climb heading 301° to 580, then on heading 270° or as assigned by ATC, expect vectors to PIJIN, cross PIJIN at or above 4000, then on track 290° to cross HAWWC at or above 5000, thence

. . . . on (transition). Maintain 6000. Expect higher altitude 10 minutes after departure.

IKAYE TRANSITION (HAWWC2.IKAYE)

TAKEOFF MINIMUMS
 Rwys 7L/7R, 12, 30: Standard.
 Rwy 25L: Standard with minimum climb of 330' per NM to 700.
 Rwy 25R: Standard with minimum climb of 230' per NM to 1600.

NOTE: RADAR required.
 NOTE: RNAV 1.
 NOTE: DME/DME/IRU or GPS required.
 NOTE: This procedure not authorized for turbojet aircraft.

SW-3, 21 JUN 2018 to 19 JUL 2018