

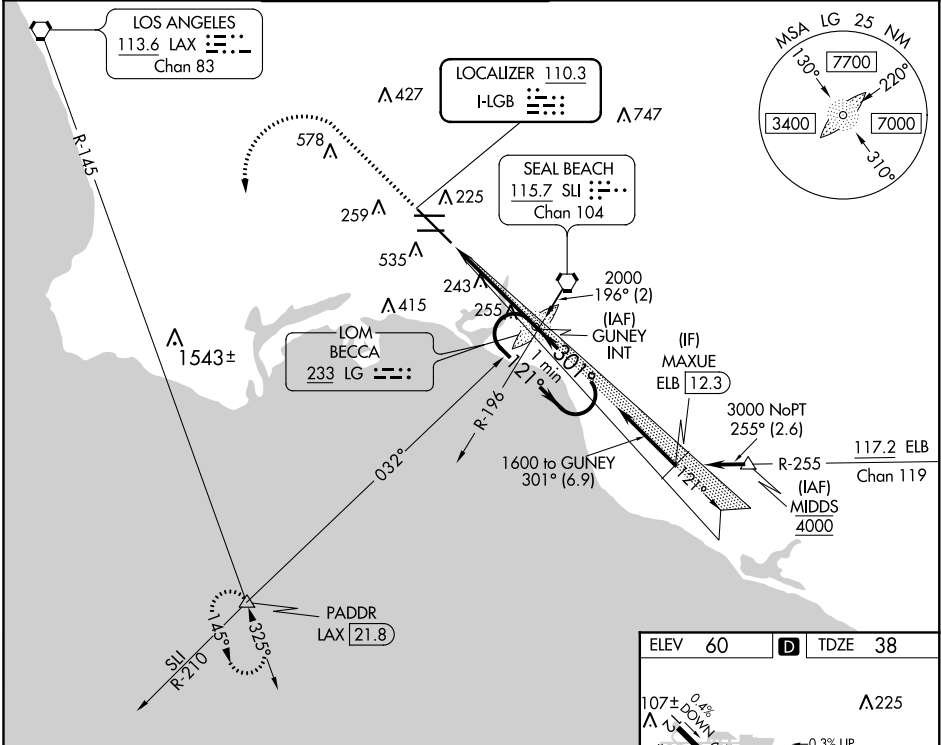
ILS or LOC RWY 30

LONG BEACH/DAUGHERTY FIELD (LGB)

LOC I-LGB 110.3	APP CRS 301°	Rwy Idg TDZE Apt Elev	7415 38 60
---------------------------	------------------------	-----------------------------	---------------------------------------

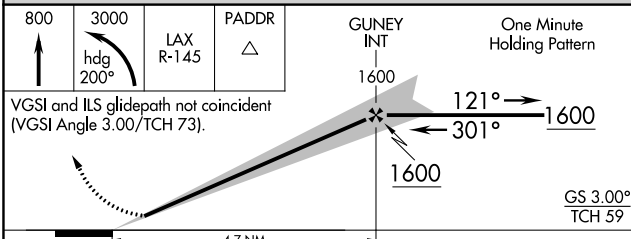
	MALS R	MISSED APPROACH: Climb to 800 then climbing left turn to 3000 on heading 200° and on LAX VORTAC R-145 to PADDR INT/LAX 21.8 DME and hold.

ATIS 127.75	SOCAL APP CON 125.35 316.125	LONG BEACH TOWER ★ 120.5 257.6 (Rwy 12) 119.4 (CTAF) 257.6 (Rwy 30)	GND CON 133.0 257.6	CLNC DEL 118.15	UNICOM 122.95
-----------------------	--	--	-------------------------------	---------------------------	-------------------------



SW-3, 21 JUN 2018 to 19 JUL 2018

SW-3, 21 JUN 2018 to 19 JUL 2018



ELEV 60	D	TDZE 38
---------	----------	---------

TDZ/CL Rwy 30	258/18	220 (200-1/2)
S-ILS 30	520/24	482 (500-1/2)
S-LOC 30	520/24	482 (500-1)
C CIRCLING	880-1 820 (900-1)	880-1 1/4 820 (900-1 1/4)
	880-2 1/2 820 (900-2 1/2)	880-2 3/4 820 (900-2 3/4)

Knots	60	90	120	150	180
Min:Sec	4:42	3:08	2:21	1:53	1:34