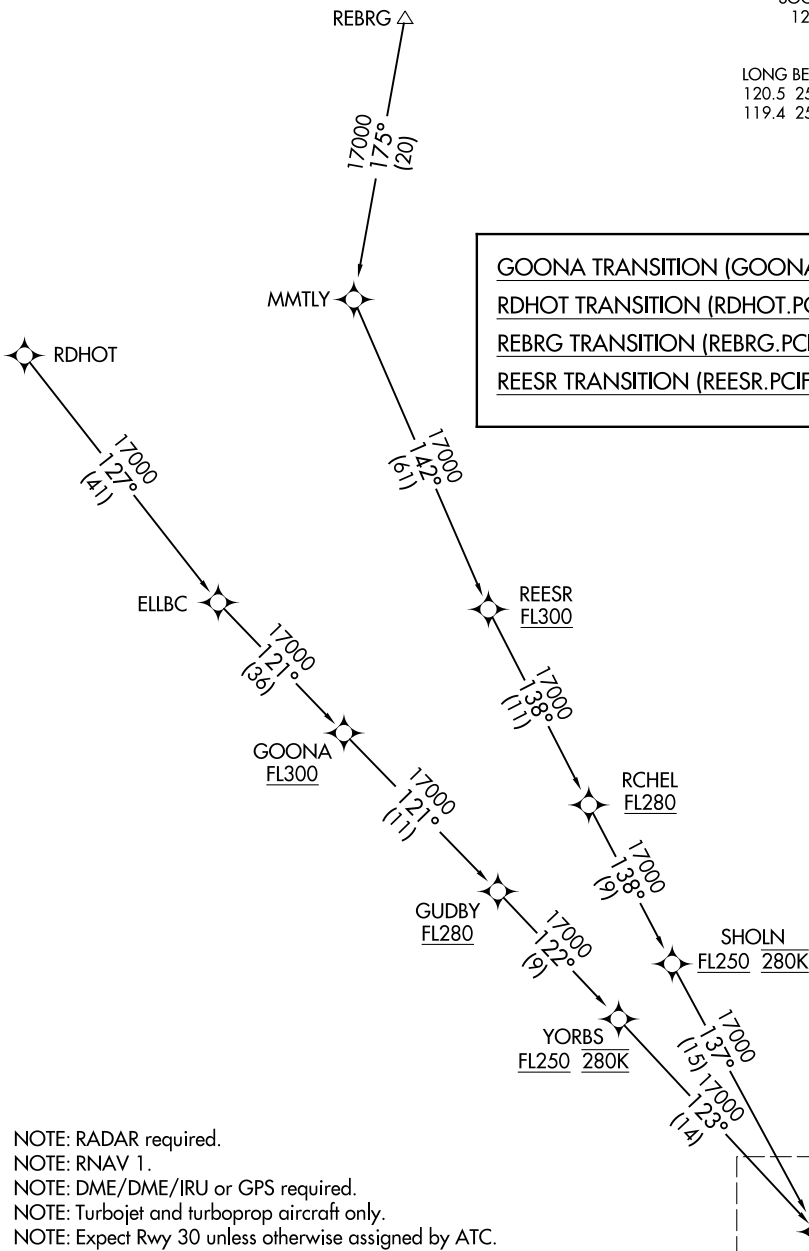


PCIFC ONE ARRIVAL (RNAV) Transition Routes

LONG BEACH, CALIFORNIA

SOCAL APP CON
127.4 263.025
ATIS
127.75
LONG BEACH TOWER ★
120.5 257.6 (Rwy 12)
119.4 257.6 (Rwy 30)

GOONA TRANSITION (GOONA.PCIFC1)
RDHOT TRANSITION (RDHOT.PCIFC1)
REBRG TRANSITION (REBRG.PCIFC1)
REESR TRANSITION (REESR.PCIFC1)



SW-3, 21 JUN 2018 to 19 JUL 2018

SW-3, 21 JUN 2018 to 19 JUL 2018

NOTE: RADAR required.
NOTE: RNAV 1.
NOTE: DME/DME/IRU or GPS required.
NOTE: Turbojet and turboprop aircraft only.
NOTE: Expect Rwy 30 unless otherwise assigned by ATC.

(CONTINUED ON FOLLOWING PAGE)

NOTE: Chart not to scale.

See following page for Arrival Routes.