

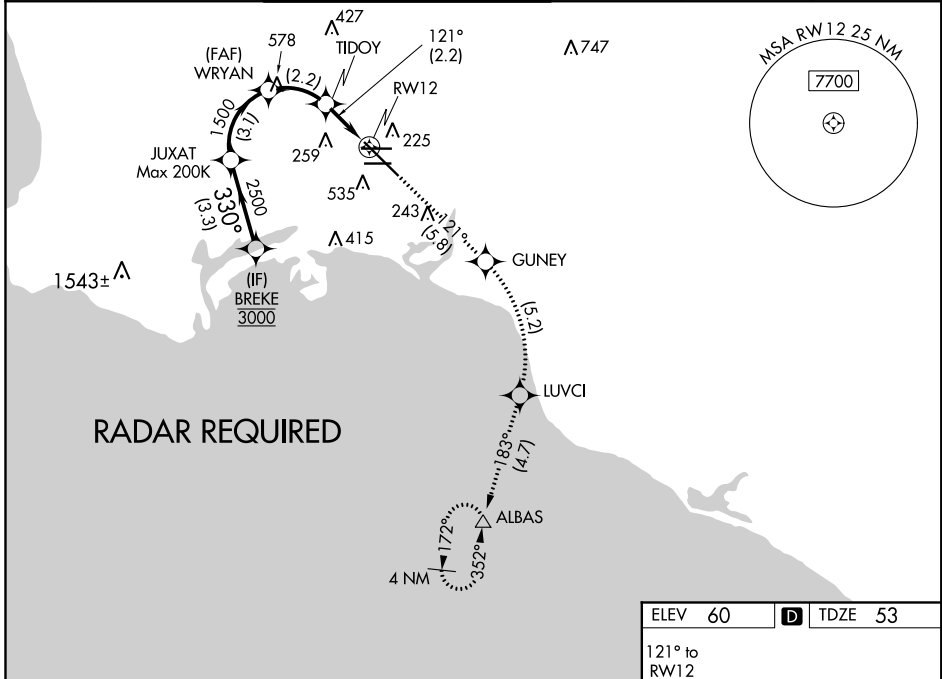
APP CRS	Rwy Idg	<b>8650</b>
<b>121°</b>	TDZE	<b>53</b>
	Apt Elev	<b>60</b>

# RNAV (RNP) RWY 12

LONG BEACH/DAUGHERTY FIELD (LGB)

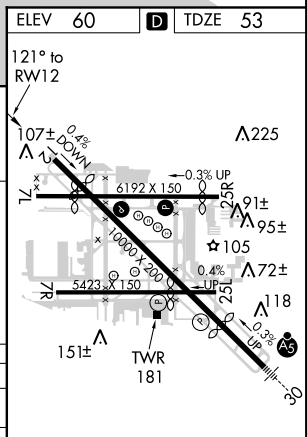
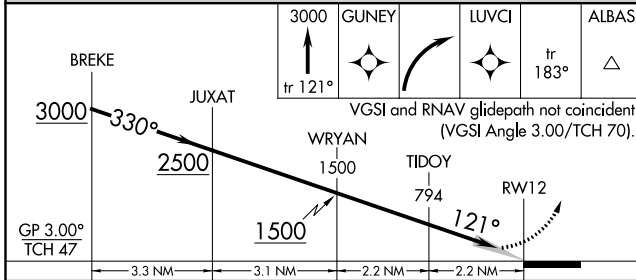
<p><b>▽</b> <b>▲</b></p> <p>For uncompensated Baro-VNAV systems, procedure NA below 4°C (40°F) or above 54°C (130°F). RF required. GPS required.</p>	<p>MISSED APPROACH: Climb to 3000 on track 121° to GUNEY, right turn to LUVCI, and on track 183° to ALBAS and hold.</p>			

ATIS <b>127.75</b>	SOCAL APP CON <b>125.35 316.125</b>	LONG BEACH TOWER* <b>120.5 257.6</b> (Rwy 12) <b>119.4</b> (CTAF) <b>0 257.6</b> (Rwy 30)	GND CON <b>133.0 257.6</b>	CLNC DEL <b>118.15</b>	UNICOM <b>122.95</b>
-----------------------	--	---	-------------------------------	---------------------------	-------------------------



SW-3, 21 JUN 2018 to 19 JUL 2018

SW-3, 21 JUN 2018 to 19 JUL 2018



CATEGORY	A	B	C	D
RNP 0.15 DA		414-1¼	361 (400-1¼)	
RNP 0.30 DA		485-1½	432 (500-1½)	

**AUTHORIZATION REQUIRED**

TDZ/CL Rwy 30  
REIL Rws 12, 25L, and 25R  
HIRL Rws 7L-25R, and 12-30  
MIRL Rwy 7R-25L