

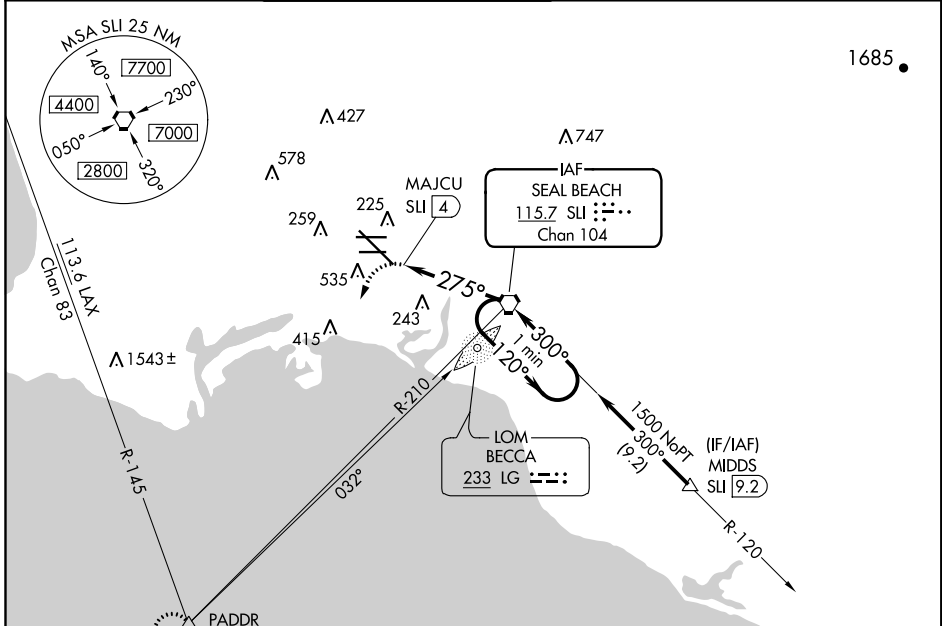
VORTAC SLI 115.7 Chan 104	APP CRS 275°	Rwy Idg TDZE 38 Apt Elev 60	7415
---	------------------------	---	-------------

VOR or TACAN RWY 30

LONG BEACH/DAUGHERTY FIELD (LGB)

<p>Inoperative table does not apply. Visibility reduction by helicopters NA.</p>	<p>MALSR</p>	MISSED APPROACH: Climbing left turn to 2500 via heading 200° and LAX R-145 to PADDR Int/LAX 22 DME and hold.			
		ATIS 127.75	SOCAL APP CON 125.35 316.125	LONG BEACH TOWER* 120.5 257.6 (Rwy 12) 119.4 (CTAF) 0 257.6 (Rwy 30)	GND CON 133.0 257.6

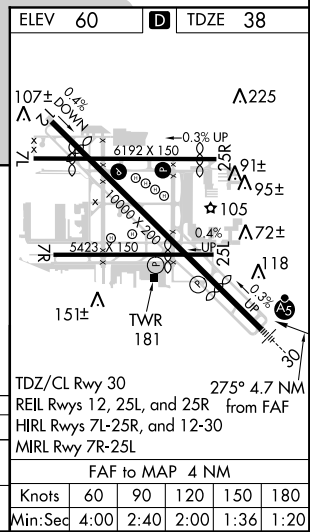
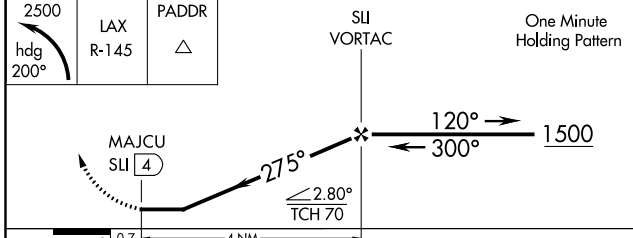
ATIS 127.75	SOCAL APP CON 125.35 316.125	LONG BEACH TOWER* 120.5 257.6 (Rwy 12) 119.4 (CTAF) 0 257.6 (Rwy 30)	GND CON 133.0 257.6	CLNC DEL 118.15	UNICOM 122.95
-----------------------	--	---	-------------------------------	---------------------------	-------------------------



SW-3, 21 JUN 2018 to 19 JUL 2018

SW-3, 21 JUN 2018 to 19 JUL 2018

ELEV 60	D	TDZE 38
---------	----------	---------



CATEGORY	A	B	C	D
S-30	640/50	602 (600-1)	640-1¾ 602 (600-1¾)	640-2 602 (600-2)
CIRCLING	880-1 820 (900-1)	880-1¼ 820 (900-1¼)	880-2½ 820 (900-2½)	880-2¾ 820 (900-2¾)

Knots				
60	90	120	150	180
Min:Sec				
4:00	2:40	2:00	1:36	1:20