

ZOOMM ONE DEPARTURE (RNAV)

AL-236 (FAA)

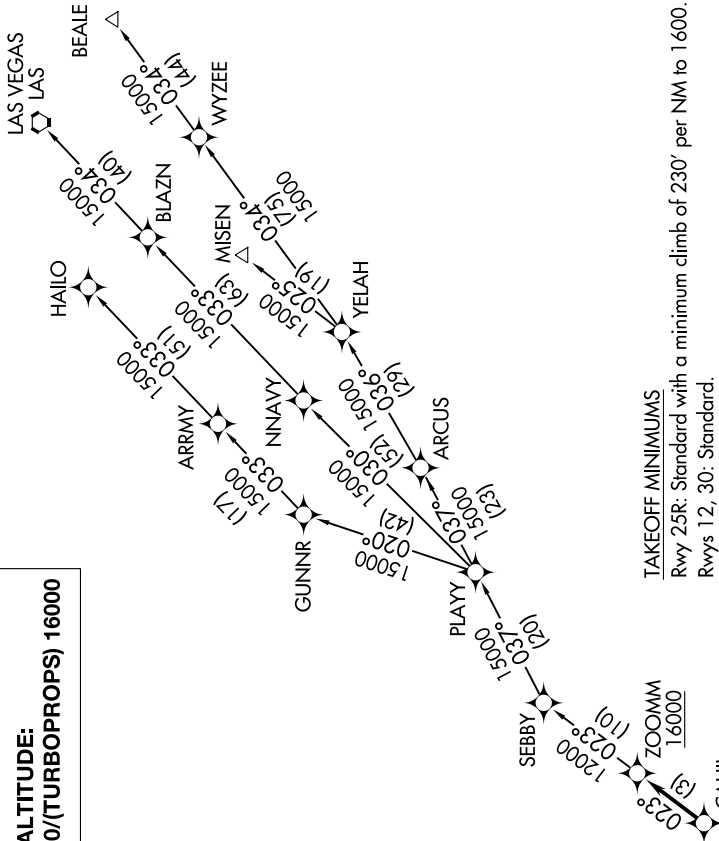
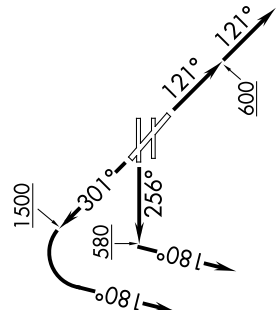
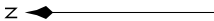
LONG BEACH/DAUGHERTY FIELD (LGB)

LONG BEACH, CALIFORNIA

SW-3, 21 JUN 2018 to 19 JUL 2018

**TOP ALTITUDE:
(TURBOJETS) 17000/(TURBOPROPS) 16000**

- ATIS 127.75
- CINC DEL 118.15
- GND CON 133.0 257.6
- LONG BEACH TOWER * 120.5 257.6 (Rwy 12)
- 119.4 257.6 (Rwy 30)
- SOCAL DEP CON 125.35 316.125 (Rwy 12)
- 127.2 269.6 (Rwys 25R, 30)



TAKEOFF MINIMUMS
 Rwy 25R: Standard with a minimum climb of 230' per NM to 1600.
 Rwys 12, 30: Standard.

- NOTE: RADAR required.
- NOTE: RNAV 1.
- NOTE: DME/DME/IRU or GPS required.
- NOTE: Turbojet and turbo prop only.

(NARRATIVE ON FOLLOWING PAGE)

NOTE: Chart not to scale.

ZOOMM ONE DEPARTURE (RNAV)

(ZOOMM1.ZOOMM) 02MAR17

LONG BEACH, CALIFORNIA
LONG BEACH/DAUGHERTY FIELD (LGB)

SW-3, 21 JUN 2018 to 19 JUL 2018