

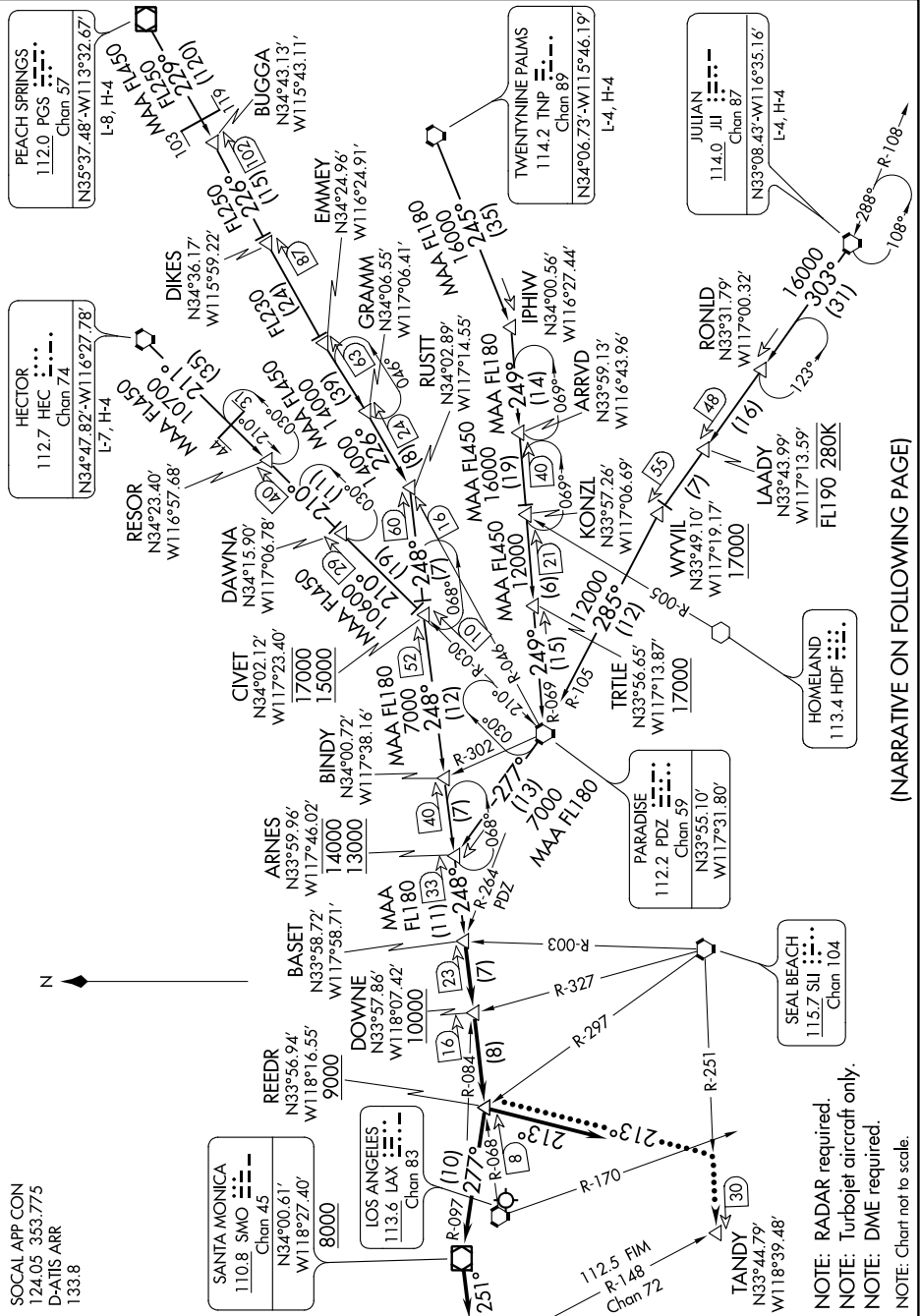
BASET FIVE ARRIVAL

AL-237 (FAA)

LOS ANGELES INTL (LAX)

LOS ANGELES, CALIFORNIA

SW-3, 21 JUN 2018 to 19 JUL 2018



SOCAL APP CON
124.05 353.775
D-ATIS ARR
133.8

SANTA MONICA
110.8 SMO
Chan 45
N34°00.61',
W118°27.40'

REEDR
N33°56.94',
W118°16.55'
9000

DOWNE
N33°57.86',
W118°07.42'
10000

ARNES
N33°59.96',
W117°46.02'
14000

BASET
N33°58.72',
W117°58.71'
13000

MAA
N34°00.72',
W117°38.16'
7000

BINDY
N34°02.12',
W117°23.40'
17000

CIVET
N34°15.90',
W117°06.78'
15000

DAWNNA
N34°23.40',
W116°57.68'
10700

RESOR
N34°47.82',
W116°57.68'
L-7, H-4

HECTOR
112.7 HEC
Chan 74
N35°37.48',
W113°32.67'

PEACH SPRINGS
112.0 PGS
Chan 57
L-8, H-4

LOS ANGELES
113.6 LAX
Chan 83

TANDY
N33°44.79',
W118°39.48'
R-148
Chan 72

SEAL BEACH
115.7 SBI
Chan 104

PARADISE
112.2 PDZ
Chan 59
N33°55.10',
W117°31.80'

HOMELAND
113.4 HDF

KONZLI
N33°57.26',
W117°06.69'

LAAIDY
N33°43.99',
W117°13.59'

ARRVD
N33°59.13',
W116°43.96'

WYVIL
N33°49.10',
W117°19.17'

I PhW
N34°00.56',
W116°27.44'

RONID
N33°31.79',
W117°00.32'

IPHW
N34°00.56',
W116°27.44'

ARRVD
N33°59.13',
W116°43.96'

MAA FL180
16000

TWENTYNINE PALMS
114.2 TNP
Chan 89
N34°06.73'-W115°46.19'

JULIAN
114.0 JUI
Chan 87
N33°08.43'-W116°35.16'

FL190 280K

NOTE: RADAR required.
NOTE: Turbojet aircraft only.
NOTE: DME required.
NOTE: Chart not to scale.

(NARRATIVE ON FOLLOWING PAGE)

SW-3, 21 JUN 2018 to 19 JUL 2018

BASET FIVE ARRIVAL

LOS ANGELES, CALIFORNIA

LOS ANGELES INTL (LAX)