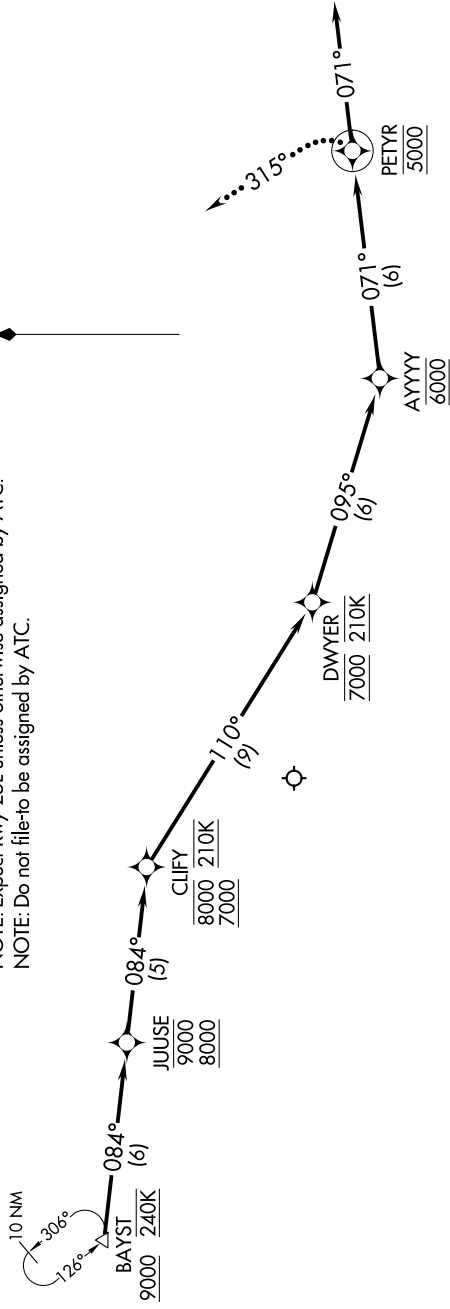
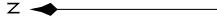


SW-3, 21 JUN 2018 to 19 JUL 2018

SOCAL APP CON
124.5 235.975
D-ATIS ARR
133.8
LOS ANGELES TOWER
(N) 133.9 239.3
(S) 120.95 379.1

- NOTE: RADAR required.
- NOTE: RNAV 1.
- NOTE: DME/DME/IRU or GPS required.
- NOTE: Turbojet aircraft only.
- NOTE: Expect Rwy 25L unless otherwise assigned by ATC.
- NOTE: Do not file-to be assigned by ATC.



NOTE: Chart not to scale.

ARRIVAL ROUTE DESCRIPTION

From BAYST on track 084° to cross JUUSE between 8000 and 9000, then on track 084° to cross CLIFY between 7000 and 8000 and at 210K, then on track 110° to cross DWYER at 7000 and at 210K, then on track 095° to cross AYYYY at 6000, then on track 071° to cross PETYR at 5000, then on track 071° or as assigned by ATC. Expect RADAR vectors to ILS or RNAV (RNP) RWY 25L final approach course.

LOST COMMUNICATIONS
After PETYR turn left heading 315° and intercept the Rwy 25L localizer, proceed on the ILS RWY 25L approach.

SW-3, 21 JUN 2018 to 19 JUL 2018