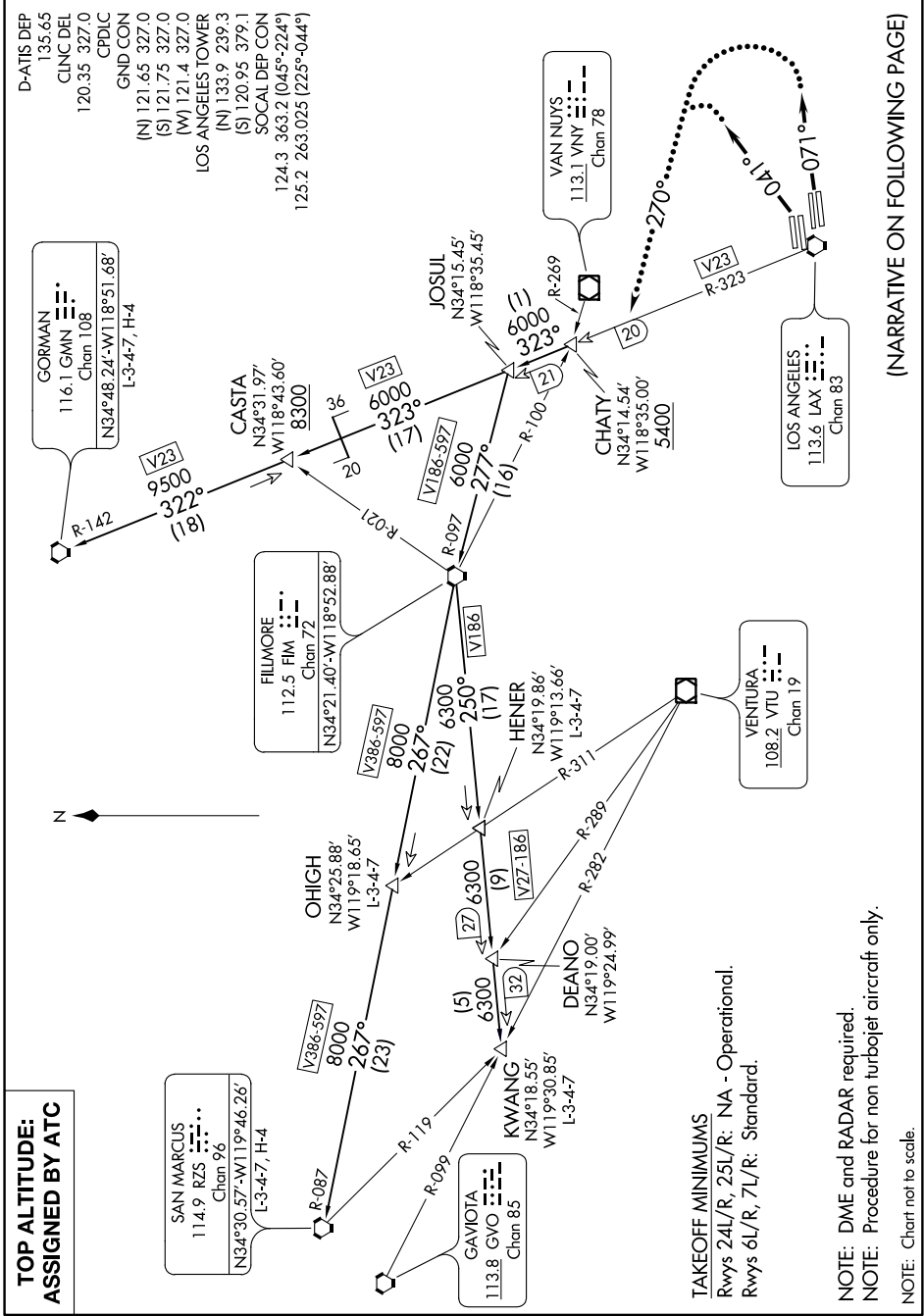


# CHATY FIVE DEPARTURE

AL-237 (FAA)

LOS ANGELES INTL (LAX)  
LOS ANGELES, CALIFORNIA

SW-3, 21 JUN 2018 to 19 JUL 2018



**TOP ALTITUDE:  
ASSIGNED BY ATC**

**TAKEOFF MINIMUMS**  
Rwys 24L/R, 25L/R: NA - Operational.  
Rwys 6L/R, 7L/R: Standard.

**NOTE: DME and RADAR required.**  
**NOTE: Procedure for non turbojet aircraft only.**  
**NOTE: Chart not to scale.**

(NARRATIVE ON FOLLOWING PAGE)

# CHATY FIVE DEPARTURE

LOS ANGELES, CALIFORNIA  
LOS ANGELES INTL (LAX)

SW-3, 21 JUN 2018 to 19 JUL 2018