

DARRK TWO DEPARTURE (RNAV)

AL-237 (FAA)

LOS ANGELES INTL (LAX)
LOS ANGELES, CALIFORNIA

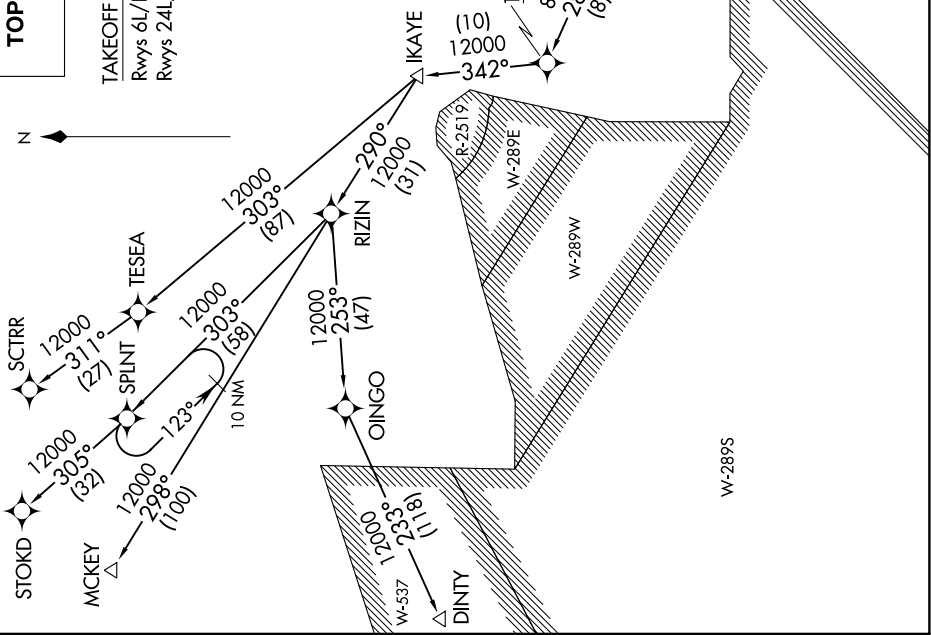
SW-3, 21 JUN 2018 to 19 JUL 2018

TOP ALTITUDE:
FL230

TAKEOFF MINIMUMS
Rwys 6L/R, 7L/R: NA - ATC.
Rwys 24L/R, 25L/R: Standard with a minimum climb
of 500' per NM to 640'.

NOTE: RNAV 1.
NOTE: RADAR required.
NOTE: STOKD, SCTRR and MCKEY transitions:
DME/DME/IRU or GPS required.
NOTE: DINTY transitions: GPS only.
NOTE: Turbojet aircraft only.

D-ATIS DEP 135.65
CLINC DEL 120.35 327.0
CPDLC
GND CON
(N) 121.65 327.0
(S) 121.75 327.0
(W) 121.4 327.0
LOS ANGELES TOWER
(N) 133.9 239.3
(S) 120.95 379.1
SOCAL DEP CON
(S) 124.3 363.2 (045°-224°)
125.2 263.025 (225°-044°)



(NARRATIVE ON FOLLOWING PAGE)

NOTE: Chart not to scale.

DARRK TWO DEPARTURE (RNAV)

LOS ANGELES, CALIFORNIA
LOS ANGELES INTL (LAX)

SW-3, 21 JUN 2018 to 19 JUL 2018