

DIRBY ONE ARRIVAL (RNAV)

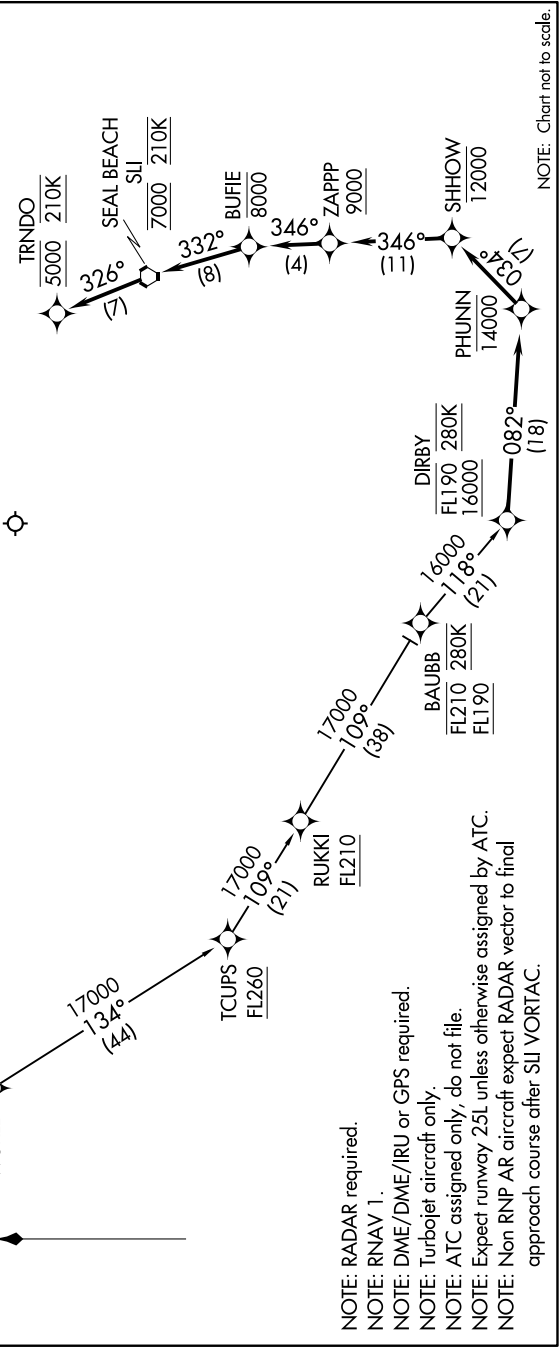
SW-3, 21 JUN 2018 to 19 JUL 2018

ARRIVAL ROUTE DESCRIPTION

RDHOT TRANSITION (RDHOT.DIRBY1)
TILLT TRANSITION (TILLT.DIRBY1)

From DIRBY on track 082° to cross PHUNN at or below 14000, then on track 034° to cross SHHOW at or below 12000, then on track 346° to cross ZAPPP at or above 9000, then on track 346° to cross BUFILE at or below 8000, then on track 332° to cross SIJ VORTAC at 7000 and at 210K, then on track 326° to cross TRNDO at 5000 and at 210K. Expect RADAR vectors to ILS or RNAV (RNP) Z RWY 25L final approach course.

LOST COMMUNICATIONS
 In the event of lost communications: RNP arrivals proceed on the RNAV (RNP) Z RWY 25L approach. All other aircraft proceed on the ILS or LOC RWY 25L.



DIRBY ONE ARRIVAL (RNAV)

SW-3, 21 JUN 2018 to 19 JUL 2018

NOTE: RADAR required.
 NOTE: RNAV 1.
 NOTE: DME/DME/IRU or GPS required.
 NOTE: Turbojet aircraft only.
 NOTE: ATC assigned only, do not file.
 NOTE: Expect runway 25L unless otherwise assigned by ATC.
 NOTE: Non RNP AR aircraft expect RADAR vector to final approach course after SIJ VORTAC.