

FIXIT FIVE DEPARTURE (RNAV)

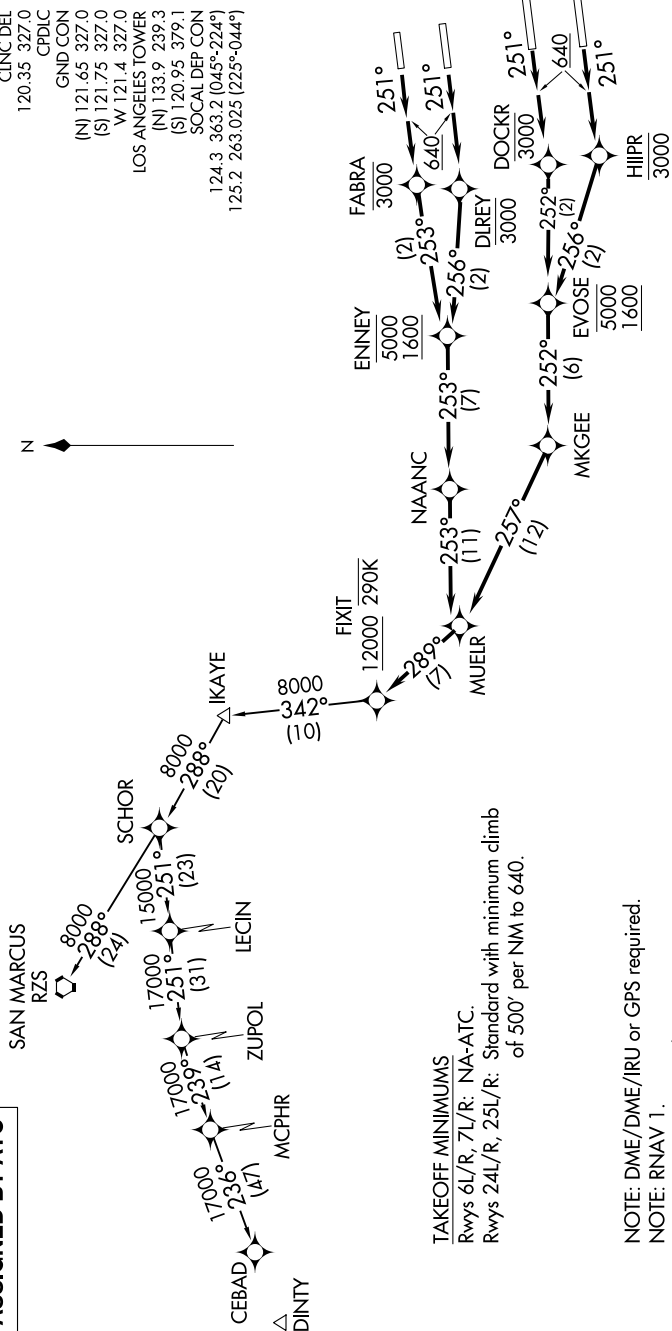
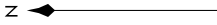
AL-237 (FAA)

LOS ANGELES INTL (LAX)
LOS ANGELES, CALIFORNIA

SW-3, 21 JUN 2018 to 19 JUL 2018

**TOP ALTITUDE:
ASSIGNED BY ATC**

D-ATIS DEP 135.65
 CLNC DEL 120.35 327.0
 CPDLC
 GND CON (N) 121.65 327.0
 (S) 121.75 327.0
 W 121.4 327.0
 LOS ANGELES TOWER (N) 133.9 239.3
 (S) 120.95 379.1
 SOCIAL DEP CON 124.3 363.2 [045°-224°]
 125.2 263.025 [225°-044°]



TAKEOFF MINIMUMS
 Rwy's 6L/R, 7L/R: NA-ATC.
 Rwy's 24L/R, 25L/R: Standard with minimum climb of 500' per NM to 6400.

NOTE: DME/DME/IRU or GPS required.
 NOTE: RNAV 1.
 NOTE: RADAR required.
 NOTE: Turbojets only.
 NOTE: Maintain at or below 250K unless otherwise directed by ATC.

(NARRATIVE ON FOLLOWING PAGE)

NOTE: Chart not to scale.

SW-3, 21 JUN 2018 to 19 JUL 2018

FIXIT FIVE DEPARTURE (RNAV)