

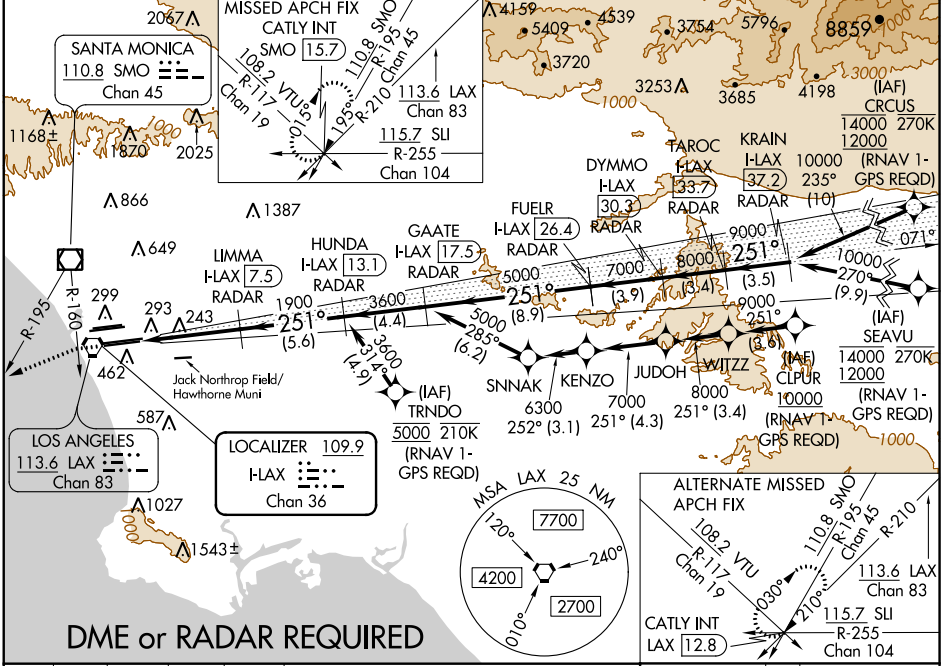
LOC/DME I-LAX 109.9 Chan 36	APP CRS 251°	Rwy Idg 11095 TDZE 104 Apt Elev 128
---	------------------------	--

ILS RWY 25L (CAT II & III)

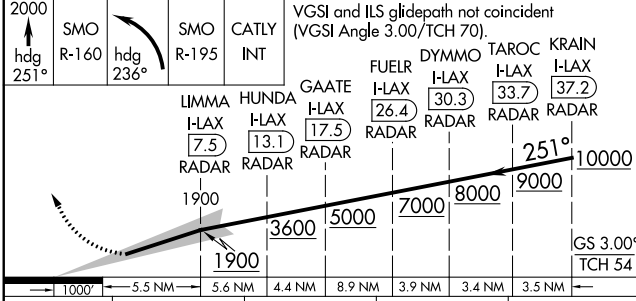
LOS ANGELES INTL (LAX)

<p>▽ DME or RADAR required. Simultaneous approach authorized. Simultaneous approach authorized with HHR.</p>	<p>ALSF-2</p>	<p>MISSED APPROACH: Climb to 2000 on heading 251° until crossing the SMO R-160 then left turn on heading 236° and on the SMO R-195 to CATLY INT/SMO 15.7 DME and hold.</p>
---	---------------	--

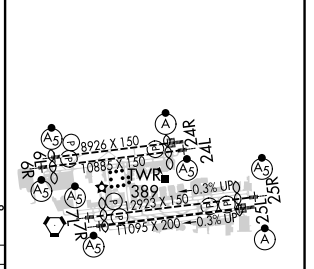
D-ATIS ARR 133.8 DEP 135.65	SOCAL APP CON 124.3 363.2 (APCH FM WEST) 124.5 235.975 (225°-044°)	124.9 269.0 (090°-224°) 128.5 360.7 (045°-089°)	LOS ANGELES TOWER N 133.9 239.3 S 120.95 379.1	GND CON N 121.65 327.0 S 121.75 327.0 W 121.4 327.0	CLNC DEL 120.35 120.35 327.0	CPDLC
---	--	--	--	---	--	-------



DME or RADAR REQUIRED



ELEV 128	D	TDZE 104
----------	----------	----------



CATEGORY	A	B	C	D
S-ILS 25L	CAT II RA 107/12 100 DA 204			
S-ILS 25L	CAT III RVR 06			

CATEGORY II & III ILS - SPECIAL AIRCREW & AIRCRAFT CERTIFICATION REQUIRED

TDZ/CL Rwy's 6R, 7L, 24R, and 25L
HIRL all Rwy's

SW-3, 21 JUN 2018 to 19 JUL 2018

SW-3, 21 JUN 2018 to 19 JUL 2018