

LOC/DME I-LAX	APP CRS	Rwy Idg	25L	25R
109.9	251°	Elev	11095	11134
Chan 36		TDZE	104	104
		Apt Elev	128	128

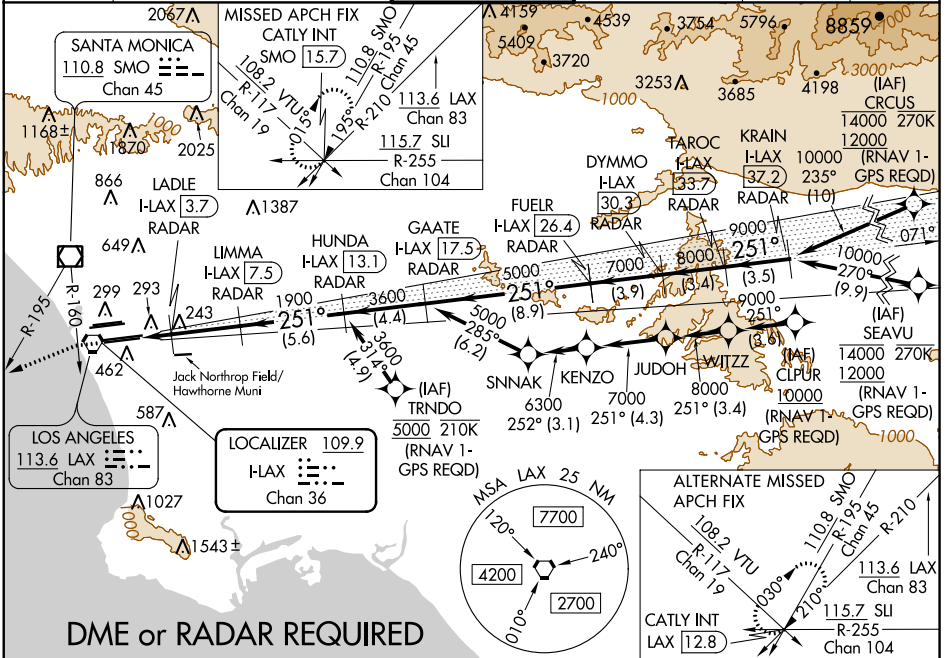
ILS or LOC RWY 25L

LOS ANGELES INTL (LAX)

▼ DME or RADAR required. Simultaneous approach authorized. Simultaneous approach authorized with HHR. LOC procedure NA during simultaneous operations with HHR LOC RWY 25.

ALSIF-2 Rwy 25L	MALSR Rwy 25R	MISSED APPROACH: Climb to 2000 on heading 251° until crossing the SMO R-160, then left turn on heading 236° and on the SMO R-195 to CATLY INT/SMO 15.7 DME and hold.
-----------------	---------------	--

D-ATIS	SOCAL APP CON	LOS ANGELES TOWER	GND CON	CLNC DEL	CPDLC
ARR 133.8	124.3 363.2 (APCH FM WEST)	N 133.9 239.3	N 121.65 327.0	120.35	
DEP 135.65	124.5 235.975 (225°-044°)	S 128.5 360.7 (045°-089°)	S 121.75 327.0	327.0	
			W 121.4 327.0		



SW-3, 21 JUN 2018 to 19 JUL 2018

SW-3, 21 JUN 2018 to 19 JUL 2018

2000	SMO R-160	SMO R-195	CATLY INT	VGSi and ILS glidepath not coincident (VGSi Angle 3.00/TCH 70).					TAROC I-LAX	KRAIN I-LAX
hdg 251°	hdg 236°			FUELR I-LAX	DYMMO I-LAX			30.3	33.7	
*LOC only	LADLE I-LAX	LIMMA I-LAX	HUNDA I-LAX	GAATE I-LAX				30.3	33.7	
	3.7	7.5	13.1	17.5				26.4	37.2	
	RADAR	RADAR	RADAR	RADAR				RADAR	RADAR	
	I-LAX (2)									
		1900	3600	5000	7000	8000	9000			
		700*	1900							
	1.2	0.6	3.7 NM	5.6 NM	4.4 NM	8.9 NM	3.9 NM	3.4 NM	3.5 NM	
CATEGORY	A		B		C		D			
S-ILS 25L			304/18		200 (200-½)					
S-LOC 25L	540/24		436 (500-½)		540/40		436 (500-¾)			
SIDESTEP 25R	540/55		436 (500-¼)		540-1½		436 (500-1½)			

ELEV 128 **D** TDZE 25L 104
TDZE 25R 104

ALTERNATE MISSED APCH FIX

251° 5.5 NM from FAF

FAF to MAP 5.5 NM

Knots	60	90	120	150	180
Min:Sec	5:30	3:40	2:45	2:12	1:50