

LOC/DME I-MKZ 109.9 Chan 36	APP CRS 071°	Rwy Idg 7R 11095 11259 7L TDZE 128 128 Apt Elev 128 128
--	------------------------	---

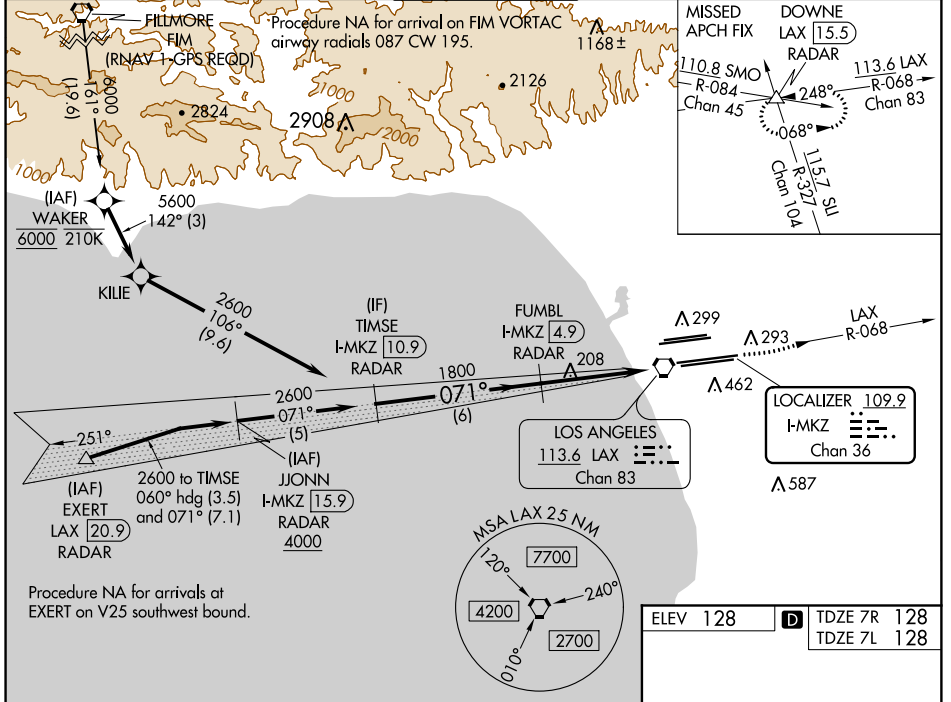
ILS or LOC RWY 7R

LOS ANGELES INTL (LAX)

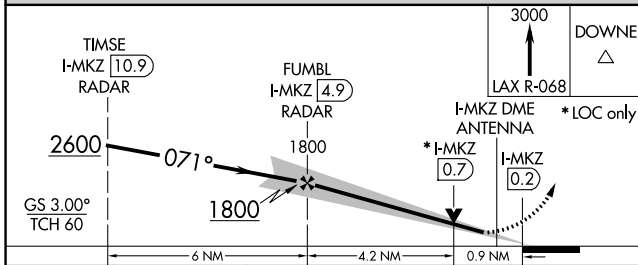
Simultaneous approach authorized. DME or RADAR required. Inop table does not apply to Sidestep Rwy 7L Cats A and B. #RVR 1800 authorized with use of FD or AP or HUD to DA.

MALS Rwy 7R	MALS Rwy 7L	MISSED APPROACH: Climb to 3000 on LAX VORTAC R-068 to DOWNNE INT/ LAX 15.5 DME/RADAR and hold.
-------------	-------------	--

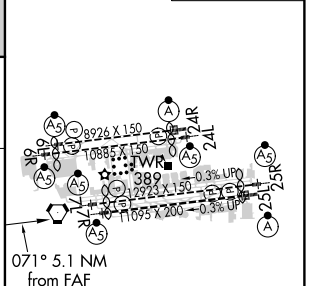
D-ATIS ARR 133.8 DEP 135.65	SOCAL APP CON 124.3 363.2 (APCH FM WEST) 124.5 235.975 (045°-089°)	124.9 269.0 (090°-224°) 128.5 360.7 (045°-089°)	LOS ANGELES TOWER N 133.9 239.3 S 120.95 379.1	GND CON N 121.65 327.0 S 121.75 327.0 W 121.4 327.0	CINC DEL 120.35 327.0	CPDLC
---	--	--	--	---	---	-------



Procedure NA for arrivals at EXERT on V25 southwest bound.



ELEV 128	TDZE 7R 128
	TDZE 7L 128



CATEGORY	A	B	C	D
S-ILS 7R#	328/24 200 (200-½)			
S-LOC 7R	460/24	332 (400-½)	460/26	332 (400-¾)
SIDESTEP 7L	520/55 392 (400-1¼)		520-1½ 392 (400-1½)	

TDZ/CL Rws 6R, 7L, 24R, and 25L HIRL all Rws	FAF to MAP 5.1 NM
	Knots 60 90 120 150 180
	Min:Sec 5:06 3:24 2:33 2:02 1:42

SW-3, 21 JUN 2018 to 19 JUL 2018

SW-3, 21 JUN 2018 to 19 JUL 2018